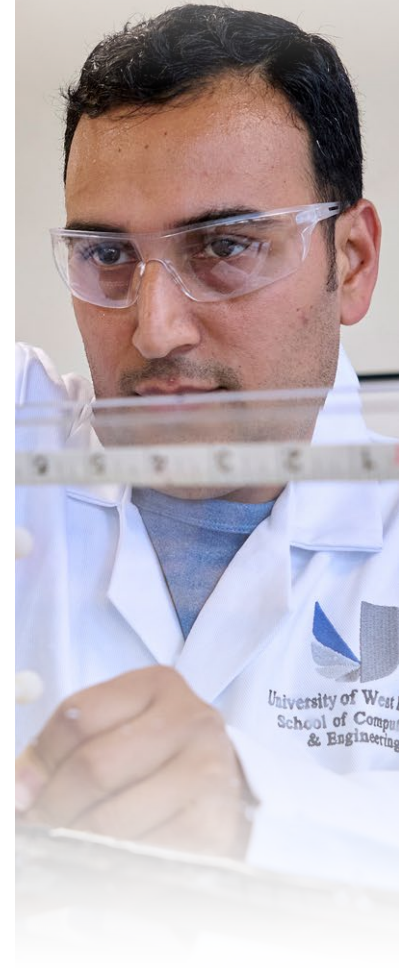




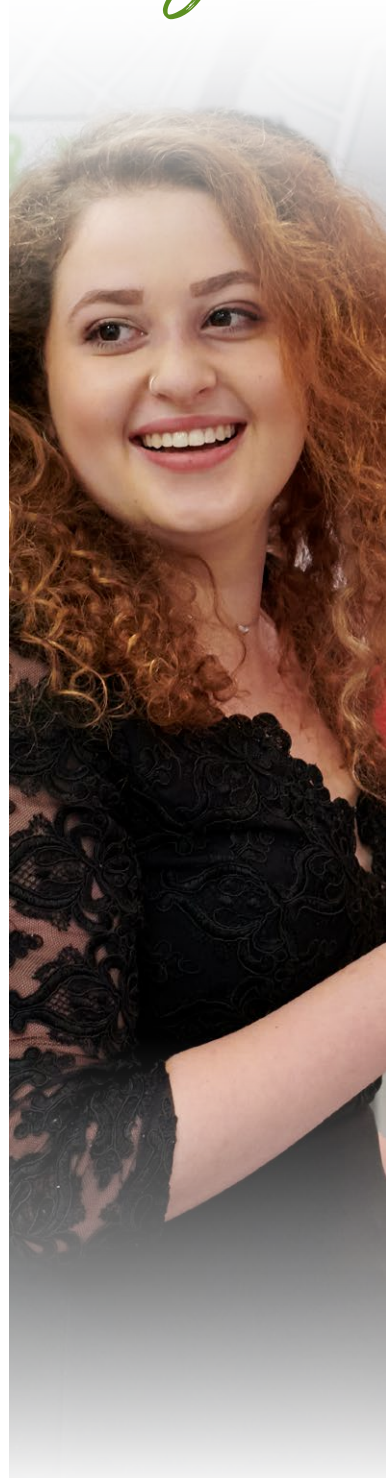
UNIVERSITY OF  
**WEST LONDON**

The *Career* University

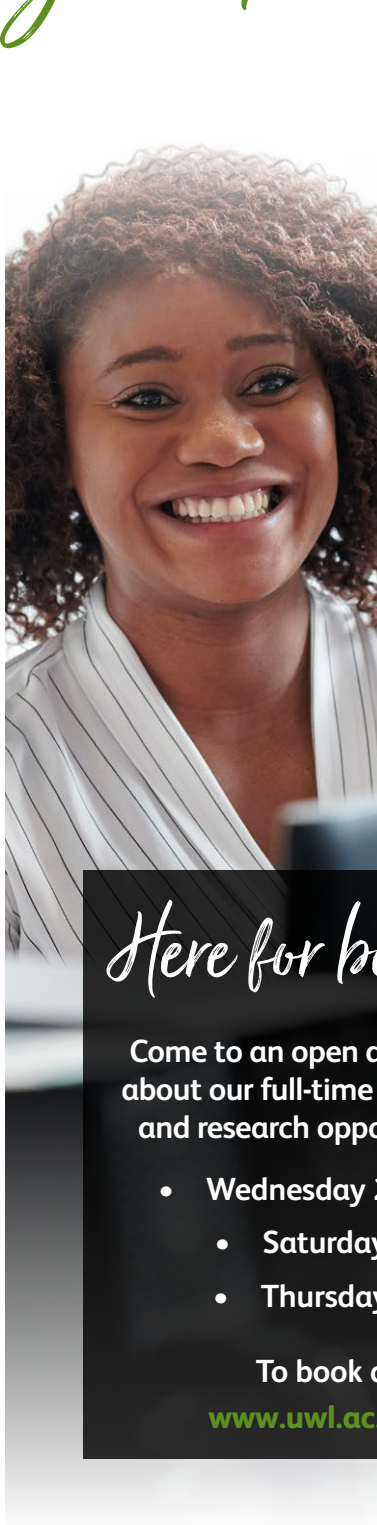


Postgraduate Prospectus  
**2025 Entry**

# *A promotion, a career change...*



*...or a long-held ambition*



*Here for better options*

Come to an open day and find out more about our full-time and part-time courses and research opportunities. Visit us on:

- Wednesday 20 November 2024
- Saturday 26 April 2025
- Thursday 19 June 2025

To book a place, visit

[www.uwl.ac.uk/pgopenday](http://www.uwl.ac.uk/pgopenday)

# Contents

Welcome .....	3
We've been building careers for decades – our history.....	4
Don't just take our word for it – our awards .....	6
Why study a postgraduate degree.....	8
Here for your future .....	10
Here for collaborations.....	11
Postgraduate research.....	12
Research degree.....	15
Research centres.....	16
Our Schools and Colleges.....	20
Course Index .....	32
Making the most of career opportunities .....	118
Connected for life – Alumni network.....	119
Modern facilities .....	120
Support .....	124
Our campus.....	126
Accommodation .....	129
Live your best life with the Students' Union .....	130
Sports Centre.....	132
Welcoming international students.....	134
How to apply and entry criteria.....	136
Fees and finance .....	137
English language requirements.....	138
Entry requirements: symbols key .....	139
Our locations .....	141
London campuses .....	142
Reading campus .....	144
Some important information .....	146

*"Choosing the right university for your postgraduate studies is one of the most important decisions you will make. We hope this will help you make the best choice."*

We aim to inspire you to become a creative professional and connect you to an exciting and rewarding career. Based in the heart of one of the UK's most successful business regions, we have highly qualified staff with a wealth of experience in their respective disciplines and strong connections with key industries.

The University has acquired a remarkable reputation for high-quality education closely linked to employment. Many of our graduates go on to achieve great success within their chosen discipline and professions.

Welcome to the career university.



Professor Peter John CBE  
Vice-Chancellor and President



*We've been building  
careers for decades*

Over the years, leading academic institutions, career-specific training providers and industry specialists have come together to make us what we are today – a university dedicated to your career.

*1860*

The Lady Byron School is founded, later known as Ealing Technical College and School of Art from 1928. This became the Ealing College of Higher Education from 1975.

*1991*

The College merged with the Thames Valley College of Higher Education, London College of Music and Queen Charlotte's College of Health Care Studies to form the Polytechnic of West London.

*1992*

The Polytechnic becomes the Thames Valley University after being granted university status by royal assent.

*1994*

The University merges with Northwick Park School of Nursing, Riverside College of Nursing and the North West Thames Regional Health Authority's AIDS unit.

*1995*

The University merges with Berkshire College of Nursing and Midwifery.

*2004*

The University merges with Reading College and Ealing School of Art and Design.

*2010*

In July, the University closes its site in King's Road, Reading (now home to Reading College).

*2011*

In April, we are formally renamed the University of West London to reflect our new focus on the Ealing and Brentford sites. In May, Laurence Geller (a leading figure in the tourism and hospitality industry) is appointed Chancellor.

*2015*

The Ealing campus undergoes a £100m+ transformation. Now it has a new social area – our Heartspace, library, students' union, auditorium, gym, restaurants and cafés, studios for the student radio station and music students, and teaching spaces.

*2016*

We buy the Brentford site (Paragon), giving us flexibility to grow and thrive.

*2017*

We invest over £1m in the development of the Paragon Annex studios and open a nursing Simulation Centre at Reading.

*2018*

Opening of the West London Food Innovation Centre and home to Heathrow Archives and exhibition and Westmont Enterprise Hub for Business Start-Ups.

*2019*

Opening of Ramli Ranger House and the new sports centre. Drama Studio London becomes part of the UWL Group.

*2020*

Opening of the School of Biomedical Sciences which offers teaching in genomics, pharmaceuticals or a related industry.

Achieved Eco Campus Platinum (ISO14001).

*2021*

We successfully bid for over £5m of government funding to help improve the environmental sustainability of our operations. Ruskin College became part of the UWL Group.

*2022*

We are in the top 100 universities in the UK for overall quality of our research.

The University founded the Institute for Policing Studies and opened the refurbished Century House and Cavendish House.

*2023*

We signed a memorandum of understanding with the Business College of Athens (BCA) to form the Hellenic Institute of Maritime Studies (HIMS) based at our Ealing Campus.

*2024*

The University launched the School of Medicine and Biosciences and Ruskin College is celebrating its 125th anniversary. The Townshend Studio opened.

# Don't just take our

**THE TIMES  
THE SUNDAY TIMES**

**Good University Guide 2025**

2nd modern university in London\*  
and No.10 out of all  
London universities



No 1 modern\*  
university in London\*\*



Teaching Excellence Framework

**The  
Guardian**

**University Guide 2025**

No.30 university in the UK

1st London modern\*

3rd UK modern university\*



National Student Survey  
2024

Ranked 1st in London\*\*  
6th in England\*\*  
and top 10 in the UK\*\*

1st in London for Mental  
Wellbeing Support\*\*

UWL Students' Union  
ranked 1st in London



Top 100 universities in the UK for  
overall quality of our research

\* A modern university is a university created in, or after, 1992, average of all questions.

\*\* Calculated as the average of all questions using registered populations. Excluding specialist providers.



# Word for it...

## Campus investment

Over the past decade we have invested continuously and significantly to create a stunning campus to ensure you have the best social and learning spaces in which you can develop and thrive.

## Surrounded by brilliant businesses

Our Ealing campus is in the heart of one of the UK's most successful business regions. Through working with high-profile organisations and experienced tutors, we use our strong industry connections to help you gain career-specific insight, expertise and skills.

## UWL is going green

Setting itself as a leader in the sector, the University of West London is committed to protecting the environment and continually improving our environmental performance. We are working hard to embed a culture of sustainability across our University and become a net zero campus by 2030.

## A blend of highly respected Schools

Our expertise covers a wide range of subjects, so you can gain the specialist know-how that gives you the edge in your chosen career.

## Postgraduate community

Our postgraduate community consists of over 1,000 postgraduate students across nine academic Schools, the Graduate School and CELT (the Centre for the Enhancement of Learning and Teaching). We have eight research centres spanning the arts, STEM, health, education and more. We focus on research that has a positive impact on real-world problems.

A postgraduate degree can enhance your career prospects, setting you apart in today's highly competitive job market. If you are considering a new career path, it is a way to enhance and build on your current qualifications and learn new, essential skills. You may also want to explore your passion for, and commitment to, a particular field of study.

# Why study a postgraduate degree?

Whatever your reasons, studying a postgraduate degree at the University of West London does not mean you have to put your life on hold, or leave the workplace. Our full and part-time study options can fit around your current commitments. It will also grow your network and help you gain fresh, valuable insights into industry that you might not gain from the workplace alone.

## Research degree or taught course?

**Research degrees** rely on independent study with regular support from supervisors. The best-known research degree is the PhD, which can last three to four years full-time, or five to six years part-time. Professional doctorate degrees are equivalent in status and challenge to a PhD but are intended to create knowledge that advances professional practice. In both PhDs and Professional Doctorates students are asked to research and present new knowledge in a thesis (typically 40,000 to 80,000 words in length, depending on the type of doctorate).

**Taught courses** are led by tutors, and in common with undergraduate courses, students attend weekly seminars and lectures. There is some independent learning, but not as much as in a research degree.

## Professional Doctorates

Studying for a Professional Doctorate is a unique opportunity to turn your career into a qualification. Professional Doctorates are a flexible alternative to traditional PhD study and are aimed at managers and a wide range of practitioners who are experienced and who are working at senior and middle levels of their professions and organisations. It offers the opportunity to research your area of interest and expertise

while continuing to work. Our Professional Doctorate programmes are designed to increase students' capacity to learn from the problems, challenges and achievements that they encounter in their professional practice.

Above all, a professional doctorate is an opportunity to examine contemporary leading theories and research evidence, and to apply these within the professional context.

- Business Administration (DBA).
- DHsD Professional Doctorate in Health Service Delivery
- DMid Professional Doctorate in Midwifery
- DNurs Professional Doctorate in Nursing



Postgraduate studies can give you an employment edge, accelerate your progression and open up new paths. We know that everybody has different career goals, so our teaching is tailored to your individual needs as an aspiring professional. Our open, accessible and supportive learning environment ensures that you will thrive.

# Here for your future

## Business connections

We are based in the heart of one of the UK's most successful business regions. Our teaching staff are connected to their respective industries with many still active in their field, so they can pass on invaluable insights and specialist subject knowledge.

We have strong connections with many national and multinational organisations such as Heathrow Airport, BBC, Hewlett-Packard (HP) Ltd, Middlesex Law Society and the Savoy Education Trust.

## Careers

We offer lifelong careers and professional development support to all students. This includes CPD (Continuing Professional Development) activity supported by one-to-one career coaching from our professional Career Consultants available to you at any point in your career journey and at flexible times to suit you. Our CPD support includes:

- professional networking
- leadership skills
- careers management.

## Volunteering

We provide a wide range of activities you can access working in our local community. There are projects suited to all interests and tailored to the amount of time you have whether that be a one off or a regular commitment. Volunteering not only helps out our community but it will allow you to make new friends and develop skills and experience which could help your career development. All volunteering is recorded and celebrated through annual volunteering awards.

## Employment Team

When you are ready to start climbing the career ladder, or if you simply need a part-time job while you finish your studies, we can help. We will provide notifications of relevant vacancies, information direct from employers up to international level, and news about upcoming recruitment and employability events.

## Work placements

Work placements are for students who are studying an internship programme and can be a great way to show employers that you have the skills, experience and capabilities they are looking for.

Our Placements Team can offer you:

- career-specific placements with recognised industry leaders
- regular updates about new placements
- information about recruitment and employability events.

## Professional Teaching Qualification

Students with a teaching role are given the opportunity by the Centre for the Enhancement of Learning and Teaching (CELT) to gain Associate Fellowship of the HEA free of charge. This is a great way to achieve a professional teaching qualification, awarded by an internationally renowned professional body, which is much sought-after by employers. Furthermore, CELT provide professional development opportunities to research students with a teaching responsibility to help them enhance their teaching and/or supporting learning skills.

# Here for collaborations

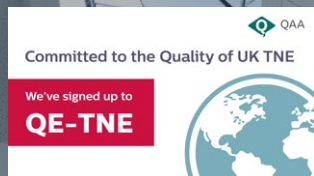
We have several partners across the UK and abroad.

## UK Academic Partnerships

- Academy of Music and Sound
- Creative Academy
- JCA London Fashion Academy
- Linx
- London School of Science and Technology
- Nelson College London
- UK College of Business and Computing

## Overseas Academic Partnerships

- American Education Limited (ANC), Sri Lanka
- Aventis School of Management, Singapore
- Avid College, Maldives
- Business College Athens
- CIM-Cyprus Business School
- Hong Kong Institute of Technology
- Marbella International University Centre (MIUC), Spain
- Schweizerische Textilfachschule – (Swiss Textile College – STF), Switzerland
- Singapore Raffles Music College
- UWL RAK, United Arab Emirates



We have a growing national and international reputation in practice-based and solution-driven research. It spans areas such as engineering, computing, hospitality, aviation, health, law, film, media, and music.

# Postgraduate research

We focus on producing useful knowledge. Our research centres concentrate on socio-economic and creative issues with a view to generating solutions to social, economic, creative and technical issues.

As a doctoral student, you will be able to study within your School/ College, and in the Graduate School. You will take part in School-based research seminars, conferences, and other activities recommended by your supervisors. You will also follow a programme of research training in the Graduate School.

You will have the chance to discuss and present your research as you progress through your doctoral journey and to build networks with fellow doctoral students and researchers in your field.

We encourage all our PhD students to present their research and publish during their studies.

We provide space where postgraduate research students can socialise and network, or study and reflect, with convenient facilities including lockers, printing and photocopying. We will welcome your application in any of the following subject areas:

## School of Medicine and Biosciences

- Ageing
- Ageing and Information and Communication Technology
- Ageing and Social Well-being
- Ageing, Ethnicity and Health
- Antibiotic Resistance/One Health Approach
- Biochemistry
- Bioengineering
- Cancer/Cancer Genomics
- Cell Biology
- Chronic Conditions and Successful Ageing
- Cognitive Ageing and Dementia
- Dementia Care
- Evidence-based Healthcare
- Healthcare Ethics
- Infection Control and Prevention

- Integrated Medicine
- Microbial Genomics
- Microbiology
- Microbiome Metagenomics
- Molecular Biology
- Musculoskeletal Biomechanics
- Non-pharmacological Interventions
- Odontogenic and Maxillofacial Bone Tumours
- Person-centred Health and Social Care.

## The Claude Littner Business School

- Accounting and Finance
- Business and Management
- Leadership and Change
- Economics and Finance
- Risk Management
- Marketing and Global Strategy
- Sustainability.

UWL is ranked in the top 100 universities in the UK for the overall quality of our research.

## REF2021 Research Excellence Framework

### School of Computing and Engineering

- Applications of Non-destructive Methods in Civil and Environmental Engineering
- Architectural Technology
- Artificial Intelligence
- Built Environment
- Civil/Structural Engineering
- Computer Networking and Distributed Systems
- Computing Interaction Design, Usability and Global Software
- Construction Project Management
- Cybersecurity
- Digital and Audio Engineering
- Fibre Optics and Electronic Engineering
- Geotechnics and Soil Engineering
- Health Monitoring of Highway Infrastructures
- Human Computer Interaction
- Hydraulics and Water Engineering
- Information Security
- Materials and Concrete Technology
- Repair and Maintenance of Buildings and Structures
- Software Engineering.

### London School of Film, Media and Design

- Adaptation Studies, Film Studies, Genre Studies, Genre Theory, Popular Fiction
- Architectural Studies
- Creative Writing, Screenwriting
- Filmmaking, Film Theory, Film and Philosophy, Screen Studies
- Gender, Technology and Work
- Media Arts, Art and Design History, Cultural History, Communication Design, Design and Visual Literacies

- Media History and Theory, Media Archaeology, Gallery and Museum Studies
- Media Studies, Media Transformations, Branding, Public Relations, Television, News and Journalism
- Modern Literature, Literary Theory, Literature and Philosophy
- Photography History and Theory, Media and Photography Practice, Photography and Philosophy, Literature and Photography
- Rethinking The Image.

### London Geller College of Hospitality and Tourism

- Airline and Airport Management
- Sustainable Aviation
- Aviation Psychology
- Airline Gastronomics
- Ground Operations and Flight Safety
- New Food and Drink Product Development
- Food Upcycling
- Healthy Eating for People with Chronic Conditions (CVD, diabetes, dementia)
- Nutrition for Vulnerable People (children, adolescents and older adults)
- Plant-based Nutrition
- Sports Nutrition
- Human Trafficking in Hospitality, Tourism & Aviation Industries
- Risk, Resilience and Reputation -Management in Hospitality, Tourism & Aviation Industries
- Equity, Diversity and Inclusion in Hospitality, Tourism & Aviation Industries
- Tourism Cities and Mobilities
- Tourist Consumer Behaviour.

### School of Human and Social Sciences

#### Criminology, Policing and Forensic Science

- Forensic Science
- Forensic Investigation
- Fraud and Corruption
- Investigative Interviewing
- Police Corruption
- Policing, Racism and Diversity
- Policing Drugs
- Police Governance and Complaints
- Private Security
- Safeguarding
- Social Justice
- Socio-Legal Studies
- Organised Crime
- Comparative Criminal Justice
- International Criminal Justice and Tribunals
- Terrorism and Extremism

#### Education and Interdisciplinary Studies

- US Foreign Policy
- International Politics of the Middle
- Intersectional Economics
- Liberatory Education
- Caribbean Diaspora Studies
- Applied Linguistics
- Education technology
- Social media and young people.

#### Psychological Sciences

- Attitudes Towards Sexual and Domestic Violence/Honour-Based Violence
- Compulsive Sexual Behaviours in the Digital Era
- Dual Diagnosis (Co-Existing Mental Health and Addictive Disorders): Interventions, Role of Peer Support, Impact of Stigma



- Ethnicity and Inclusion: access and provision of mental health and addiction services
- Gender in the Media
- Health Behaviours
- Identity, Norms and Personality Factors in Addiction
- Mental Health and Resilience
- Public Engagement and Arts-based Methods
- Therapeutic Use of Cannabis Based Products
- Use of Virtual Reality
- Visual and Multisensory Perceptions and Cognitions.

### School of Law

- Commercial Law
- Criminal Justice
- Cyber Crime
- Law Enforcement
- Prosecuting Digital Crimes
- Intellectual Property Law
- International Arbitration
- International Commercial Law
- International Criminal Law
- International Human Rights
- International Investment Law
- International Law of Armed Conflict
- International Organised Crime
- Litigation Finance and Third Party Funding
- Public International Law
- Trusts Law.

### London College of Music

- Music/Audio Technology
- Record Production
- Multi-channel and Spatial Playback Formats
- Novel Interface Design, including Haptic Feedback Systems
- Composition
- 21st Century Performance Practices
- The Business of Music Making
- Pedagogy
- Dramatic Arts
- Musicology.

### College of Nursing, Midwifery and Healthcare

- Ageing
- Child Health
- Healthcare Epidemiology
- Healthcare Education
- Healthcare Policy and Management
- Infection Prevention and Control and Communicable Disease Prevention Management
- Mental Health
- Midwifery and Women's Health
- Nursing Practice
- Patient Centric Care
- Public Health
- Social Policy
- Translational Medicine.

### How to apply

To apply for a PhD, you need to submit a brief research proposal, your CV, the transcript of your highest qualification and an application form. For further information on how to submit your application online visit [www.uwl.ac.uk/study/graduate-school](http://www.uwl.ac.uk/study/graduate-school)

### The proposal helps us assess your suitability for higher degree work, including:

- Viability of the topic as a research study.
- Clarity of the topic.
- Methodology and the practicalities required for a research degree.
- Appropriate supervisor(s) to be appointed to support your research.

### Additional Information

For additional information, contact the Graduate School at [researchdegrees@uwl.ac.uk](mailto:researchdegrees@uwl.ac.uk)





# Research degree

## Doctor of Philosophy

A candidate for a PhD degree is expected to critically investigate and evaluate an approved topic resulting in an independent and original contribution to knowledge, worthy of publication in complete or abridged form. You must show evidence of your ability to undertake further research independently and must also present and defend your thesis by oral examination to the satisfaction of examiners appointed by the University.

A PhD is normally completed in three to four years (full-time) or five to six years (part-time).

## Support for research students

When you are registered as a research student, you will be assigned two (sometimes three) supervisors who will guide and support your research. A key aspect to your study will be regular meetings and correspondence with your supervisors and engagement with the activities of the Graduate School, including a mandatory programme of research training.

We run an annual conference for doctoral students, where participants are encouraged to present a paper or poster on some aspect of their research. You will also have other opportunities to present your research such as postgraduate student seminars and forums, and seminars within your subject area.

► For more details on becoming a research student at the University of West London, please visit [www.uwl.ac.uk/study/graduate-school](http://www.uwl.ac.uk/study/graduate-school)

# Research centres

Research at the University of West London spans a broad range of fields across the arts, STEM, health, education and more. We focus on research that has an impact on real-world problems, drawing on our close ties with businesses and industries as well as the expertise of our staff.

We have built up particular specialisms in the following areas. Each of our Research Centres is staffed by experts with an enviable record of publications, conferences, media and public engagement work in their chosen fields.

## **Geller Institute of Ageing and Memory**

The Geller Institute of Ageing and Memory delivers research and education that informs and improves quality of care and support for people living with dementia, their families, and health and social care staff caring for them. We examine care across a range of care settings and for a diverse range of people.

The Institute responds to a pressing contemporary health and social care challenge: the need to improve the quality and humanity of care that people living with dementia receive

locally and globally. We are an interdisciplinary team that includes expertise in sociology, nursing, social policy, psychology, health policy, law, bioethics, epidemiology, and philosophy, hence our research draws upon a wide range of methodologies and is informed by our diverse disciplinary approaches.

Our current research programmes:

- Understanding the organisation and delivery of care for people living with dementia during an unscheduled hospital admission.
- The development of psychosocial interventions to promote good practice and improve quality of life for people with dementia and their family carers.
- Exploring the views and experiences of people living with dementia and their family carers on residential respite services, the timing of a move to long term care, and managing continence at home.
- Investigating the influence of social relationships on cognitive, physical and mental health outcomes, and subjective well-being experiences, in older adults.

## **Policy and Practice Research Institute for Screen and Music (PRISM)**

The Institute focuses on impacting research in the music and screen industries and draws on the University's long history of expertise in film, music, advertising and the performing arts. PRISM is particularly focused on encouraging interdisciplinary research which breaks down traditional barriers in the humanities and social sciences.

## **Ruskin Institute of Social Equity (RISE)**

The Ruskin Institute for Social Equity (RISE) was launched in September 2024. It builds on the work of the Centre for Inequality and Levelling Up which finished its work in July 2024 with the election of a new Labour government. RISE will produce policy relevant research related to inequality in the UK with a particular focus on place based inequality; education and skills, work/labour market and the role of business. It will be co-located at the UWL Ealing site and Ruskin College, Oxford.

## Focus on research



**A report from University of West London’s Professor Ben Hine, titled *Lost Dads, The Fathers and Family Breakdown, Separation and Divorce (FBSD) Project*, is the most comprehensive examination of the experiences of separated fathers to date.**

While many studies have looked at the impact of family breakdown on women, few have considered the mental health impact on men, particularly in their role as fathers. This new report brings together extensive new research conducted with over 1,000 men and six organisations to help answer this question.

The most pressing finding is the severe mental health impact on men, including suicidal

ideation, and the report explores why men may be more likely to take their lives than women following family breakdown. He concludes that, as a society, we must act, not only to support separated fathers, but to change the attitudes and stereotypes behind their experiences.

Fathers play such a valuable role in the lives of children, whether parents are together or not. Enacting the recommendations in this report would not only help to tackle a major unseen mental health crisis, but also greatly enrich children’s lives.

▶ For more information visit  
[uwl.ac.uk/lostdads](http://uwl.ac.uk/lostdads)



## *Research centres (continued)*

### **West London Food Innovation Centre**

The West London Food Innovation Centre assists food and drink startups as well as small and medium-sized enterprises to turn innovative concepts into marketable products. It offers services ranging from product formulation to sensory evaluation and facilitates a scientific approach to new product development for its clients. Postgraduate researchers in Food Business Management and Nutrition Science will use the facility for experimentation and new product development in Sports Nutrition and Airline Gastronomics.

### **Cybersecurity and Criminology Centre**

The Cybersecurity and Criminology Centre is a hub for interdisciplinary research and public engagement in cybersecurity, crime and their intersections.

### **The International Centre for Hospitality and Aviation Resilience Management (ICHARM)**

This Centre provides an inclusive platform for interdisciplinary impactful research within the context of hospitality, tourism and aviation, focusing primarily on the management of reputation, risk and resilience in these industry sectors.

The Centre's goal is to address the most important and pressing issues in hospitality, tourism and aviation by fostering outstanding research, drawing on cutting-edge ideas and practices and collaborating with leading experts from both the academic and practitioner communities.

### **European Institute for Person-Centred Health and Social Care**

The last decade has brought with it an increasing recognition that chronically ill patients need more comprehensive forms of assistance, mandating a need to move away from our current approaches to the management of these conditions and towards newer models of care that are personalised, integrated and contextualised.

The European Institute for Person-centred Health and Social Care will rapidly signal the University of West London's entry into this new and high profile field of academic enquiry.

## The Faringdon Research Centre for Non-Destructive Testing and Remote Sensing

The Faringdon Research Centre for Non-Destructive Testing and Remote Sensing explores new avenues of research into the development and enhancement of non-destructive testing equipment and remote sensing methods. Within this context, the Centre carries out research and consultancy work on the applications of non-intrusive methodologies and techniques. The Centre utilises both hardware and software technology in their research and consultancy projects.

Our particular areas of expertise are:

- Health Monitoring and Assessment of Ancient Trees, Urban Trees and Tree Roots
- Health Monitoring and Assessment of Highways, Airfields, Bridges and Tunnel Structures
- Mechanical Properties of Ballast Foundations of Railway Tracks
- InSAR Satellite Imaging and Immersive Technologies.

## Institute for Policing Studies

The Institute for Policing Studies (IPS) is an exciting new development and reflects the increasing role of Higher Education in the policing community in London and the UK. The advent of cyber-enabled and cyber-dependent crime has provided fresh policing challenges alongside existing issues appearing in these new contexts. Leadership in policing routinely covers international boundaries and jurisdictions, but the core skills of policing remain. The Institute will promote these aspects of professional policing whilst leading studies in key areas. Reflecting on the lessons learnt from both historic investigations and current incidents, we will work with our partners in policing and the wider security arena to produce cutting edge, evidence based, research.

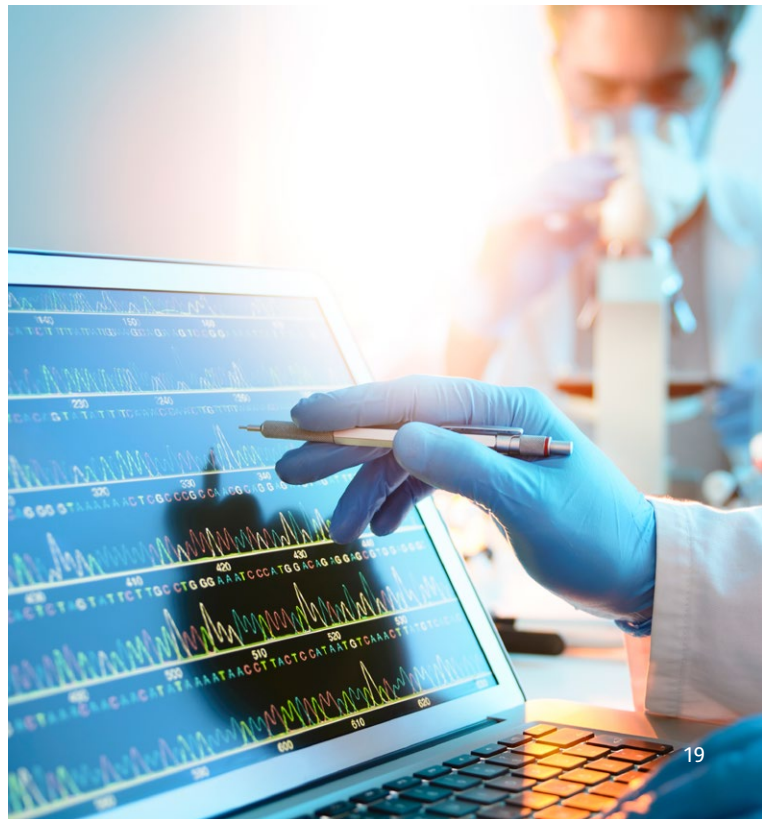
## The Richard Wells Research Centre

The Richard Wells Research Centre conducts an active programme of research focusing on improving patient safety. The Centre conducts primary research, undertakes guideline development and review and, through its work as an internationally accredited centre for evidence-based practice, carries out comprehensive systematic reviews.

Our particular areas of expertise are:

- Patient Safety and Infection
- Mental Health
- Midwifery and Family Health
- Learning Disability
- Dementia Research.

► For more information visit [www.uwl.ac.uk/research/research-centres](http://www.uwl.ac.uk/research/research-centres)



# *Our Schools and Colleges*





## School of Medicine and Biosciences

Prepare for a rewarding career enabling you to make a real difference to human health by studying a course focused on developing practical skills informed by cutting-edge research.

Our School offers a range of exciting and stimulating degrees designed to expand your knowledge, develop your personal and interpersonal skills and enhance your employability.

Whichever course you choose, you will work in an environment that takes you seriously, to help you realise and develop your potential. Our postgraduate degrees prepare you for a wide range of careers in healthcare, biotech industry, teaching and research – whether you want to work in the NHS, in academia, medical research laboratories, pharmaceutical research, the food industry, as a private therapist, in health

education and public health or areas such as international aid and development.

School staff include leading researchers in their fields, in diverse areas including genomics, bioinformatics, pharmacology, person-centred care, ageing and memory, and translational medicine. As a postgraduate, you will be part of a learning environment that includes cutting-edge research. You will also be part of an interdisciplinary community, sharing relevant modules with students studying other scientific degrees, but also specialising in the area that fascinates you most.

All postgraduate courses include a capstone project allowing students to focus their studies on their respective career goals.

# The Claude Littner Business School

A multi-award winning Business School bringing students and businesses together. Creating unique learning opportunities. Here for enhancing experience and employability.

At The Claude Littner Business School, we believe in creating a learning environment that fosters collaboration. We work closely with an ever-growing number of businesses to support their capability to thrive in a competitive global market. As a student, you can expect to be involved in this work.

Our School is a unique mix of acadewwnternational business, economics, business analytics, accounting, finance, capital markets, investment or leadership, we will prepare you to be a highly effective professional in the real world.

We are based in the heart of west London's commercial district, and our strong links with business and professional associations ensure that our students benefit from a career-focused curriculum. We have one of the highest graduate employability rates in the country.

Through industry-based projects students can apply their knowledge and skills to actual real-world problems. Aspiring entrepreneurs can find support to develop their business ideas.



## A connected education:

- Providing a seamless transition from education to career.

## Enhanced career prospects:

- One of the UK's highest graduate employability rates.





**A connected education:**

- Ongoing exchange of ideas and leading practice.

**Enhanced career prospects:**

- Internationally recognised expertise.

# School of Computing and Engineering

Because technology is the catalyst for growth. Here for people who want to lead the way.

Get to grips with the ground-breaking technology that is transforming society and business. Whether you are interested in computer science, software development, security and networking, information systems, artificial intelligence systems, information management, engineering (civil, environmental and digital audio) or the built environment; our internationally recognised School of Computing and Engineering is here to help you progress.

Our full-time and part-time postgraduate courses meet the needs of industry and research to provide the perfect forum for exchanging ideas and leading practice in civil engineering, civil and environmental engineering, digital audio engineering, software engineering, construction project management, computer science,

health informatics, artificial intelligence and information systems. We will build on your undergraduate understanding of theory, practice and application, while providing advice, support and collaborative research and knowledge transfer activities.

Our teaching and research expertise in usability, internationalisation, software engineering, analytical and modelling methods is highly regarded and world leading in certain areas. We are confident that we will help you develop one or more specialist practice areas that will increase your employability in the UK and abroad.

We look forward to welcoming you to the School of Computing and Engineering which has recently invested in industry standard facilities and research centres.

“Our masters courses aim to provide further learning opportunities for students to have a good vision of the knowledge in the industry and be more successful in future career prospects.”

**Professor Kourosh Behzadian**  
Course Leader of MSc Civil Engineering



# London School of Film, Media and Design

Alumni who work in TV, Film, Games, Journalism and Advertising, win creative awards and come back to share their expertise. Here for giving you the creative and technical support you need.

Our courses in film, media and design draw on the expertise of our inspirational staff and alumni. We ensure our students leave with the skills and experience they need to thrive in today's industries. Whatever aspect of the creative and media industries you are interested in, we have a wide range of courses that are relevant, exciting and professionally orientated.

Our graduates have gone on to work with organisations such as the BBC, Sky and River Island, among many others, and you may have the opportunity to undertake placements with such organisations.

We are all about professionalism. For us it is an attitude and a way of doing things, and a vital element in gaining employment. If you decide you want to set up your own business, we can give you the entrepreneurial insights you need.

We have created a supportive and well-equipped environment in which you can pursue your interests and passions, and make the most of your time with us.

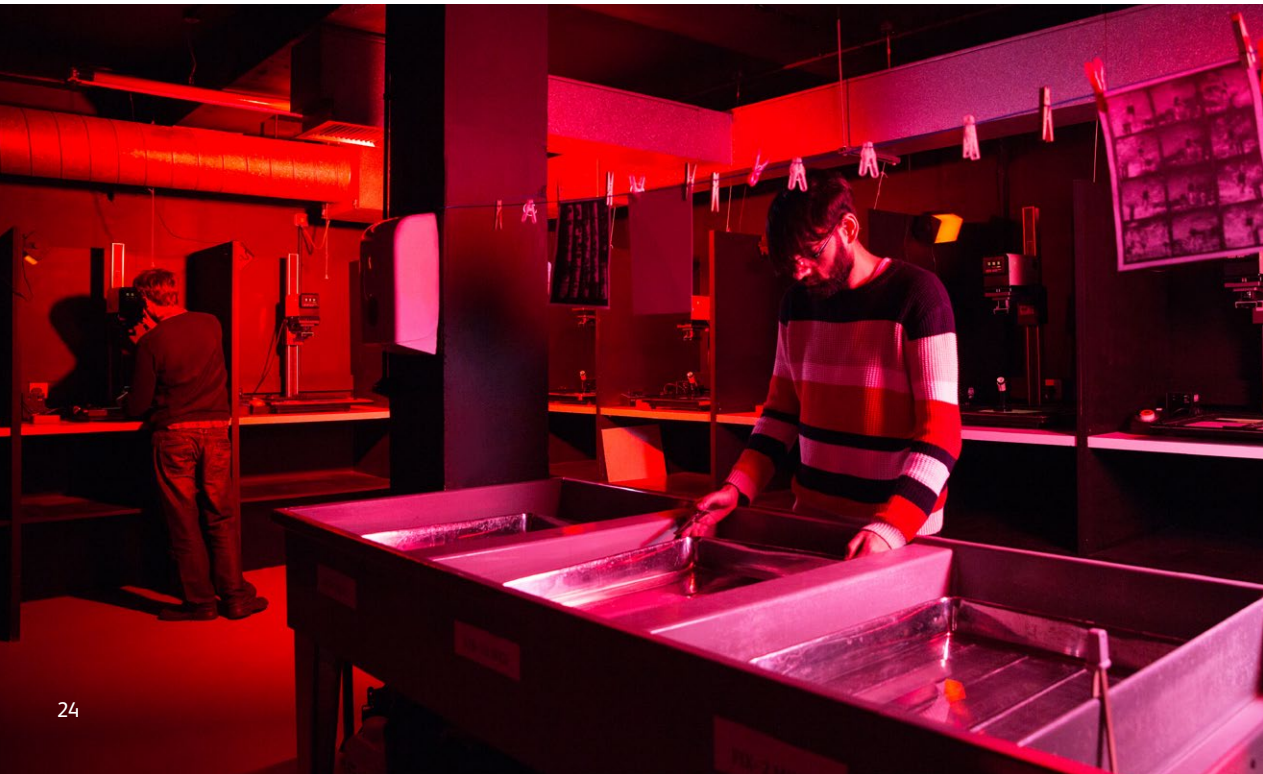
We look forward to welcoming you to the London School of Film, Media and Design.

## A connected education:

- Courses developed and led by experienced and renowned staff and academics.

## Enhanced career prospects:

- Employability skills are central to everything we do.





**A connected education:**

- Supported by guest lectures from industry professionals.

**Enhanced career prospects:**

- Internationally respected as a provider of industry-relevant courses.

# London Geller College of Hospitality and Tourism

Where real-world experience meets academic rigour.  
Here for people who want to go places.

London Geller College of Hospitality and Tourism has over 70 years of teaching expertise. The College is accredited by leading professional bodies, including the Institute of Travel and Tourism.

The College attracts tourism, aviation and hospitality teachers of international repute. It also enjoys excellent working relationships with a range of local, national and international organisations.

We aim to provide a high quality tourism and hospitality environment that combines theoretical and hands-on learning. Features include our training restaurant ‘Pillars’, twice named London Training Restaurant of the Year; tourism and hospitality teaching suites; a flight simulator and a Food Innovation Centre.

We look forward to welcoming you to the London Geller College of Hospitality and Tourism.

“This course allowed me to fast track to a management position with IAG. I now travel extensively around Europe and enjoy a truly challenging and rewarding career in the organisation.”

**MA International  
Tourism and Aviation  
Management student**



# School of Human and Social Sciences

Empowering and equipping you to shape a sustainable, just and healthy society.

Combining practical teaching with strong links to the wider professional sphere, the School of Human and Social Sciences provides an environment in which you can develop the knowledge, skills and confidence you need for your future academic and professional development. We believe strongly in encouraging students to learn independently, supported by an experienced and committed team of teaching staff.

Our teaching is enhanced by several suites of recently refurbished laboratories, equipped with modern instrumentation. Together, these

enable us to have a wide range of practical sessions in psychology, physiology, biochemistry, chemistry, biology and molecular sciences.

We have strong links with professional bodies in the sciences, including The British Psychological Society (BPS).

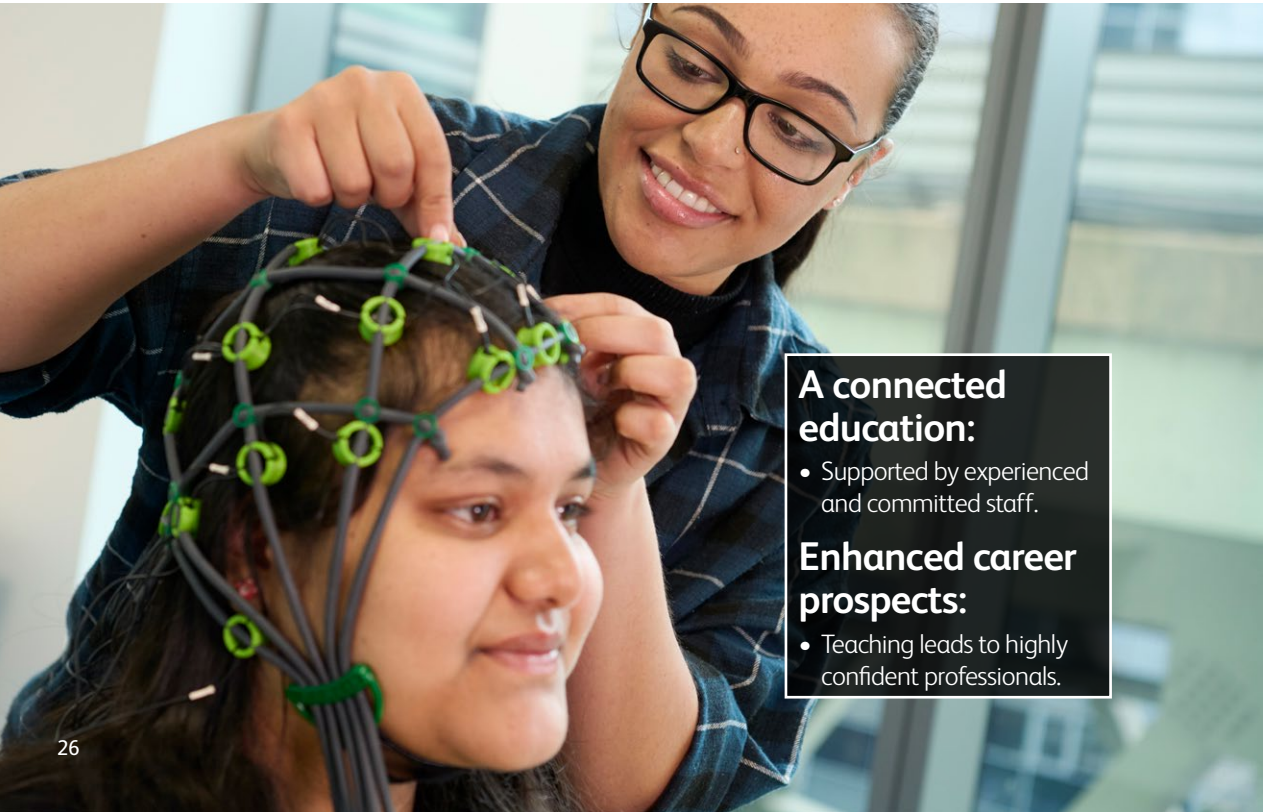
We look forward to welcoming you to the School of Human and Social Sciences.



The British Psychological Society  
Accredited

“As a BPS accredited course the MSc in Health Psychology is both interesting and challenging. It is also great that lecturers at the University of West London are so approachable and helpful. A thoroughly enjoyable experience.”

MSc Health Psychology student



## A connected education:

- Supported by experienced and committed staff.

## Enhanced career prospects:

- Teaching leads to highly confident professionals.



## School of Law

Supervision and support from people who know the world of legal practice inside out. Here for people who want to do justice to their ambition and skills.

At the School of Law you will join a diverse, supportive community. You will benefit from being taught by dedicated and enthusiastic tutors, who have a wide range of academic, professional and practical skills and experience relevant to the courses they teach. A number of tutors engage in highly specialised academic research, others are professionally focused, having practised as solicitors in city, regional or high street firms, government offices or charities. Some are barristers and magistrates.

We run a range of postgraduate courses, many of which are internationally and commercially focused. If your interest is in qualifying as a solicitor, then you can opt for one of our LLM's.

Our facilities include a mock court room, equipped with leading technology, which brings learning to life and provides the ideal venue for student mooting competitions.

You will have the opportunity to engage in extra-curricular activities to enhance your study experience by joining and participating in the Student Law Society. Society events have included tours of legal institutions, mooting competitions, quizzes, dinners and international study tours.

The University is close to the centre of legal administration and policy in Parliament, the Royal Courts of Justice, the new Supreme Court, the Old Bailey and the Inns of Court. We also have excellent links with legal professionals working in the commercial, high street and not for profit legal sectors.

### A connected education:

- Professional guest lectures and hands-on legal experience.

### Enhanced career prospects:

- Alumni network and professional contacts providing placement opportunities in small and large solicitors' firms and marshalling.

# London College of Music

Focused courses taught by practising industry experts.  
Here for people who want to be heard.

Explore your creative potential at one of the largest specialist music and performing arts institutions in the UK, London College of Music (LCM). Whether you are interested in performance, composition, music technology, performing arts or music management, we are here to help you discover and nurture your talent. As an all-Steinway school with one of Europe's largest studio complexes, we offer an impressive range of innovative courses.

Our ground-breaking courses, delivered with creativity and passion, are respected worldwide and our graduates are in high demand. You will be taught by practising industry experts, while visiting staff from all over the globe bring you fresh perspectives.

Our courses are based in west London, the hub of the UK's music and media business. Depending on your course, you will have access to our recording and production studios, and a multi-functional performance space.

We will help you actively engage with networking opportunities, gaining invaluable experience beyond your specialist area of study.

We welcome students who share our passion for music education and exploration.



STEINWAY & SONS.

**REDNET**<sup>®</sup>



## A connected education:

- Access international expertise and networks through visiting staff.

## Enhanced career prospects:

- Our ground-breaking courses are respected worldwide.



# College of Nursing, Midwifery and Healthcare

Here for people who want to deliver the best healthcare.  
Here for you!

Whether you're pursuing a new career path or wanting to enhance your clinical knowledge and skills, we're here for people who want to deliver the best healthcare. We're here for you!

The College of Nursing, Midwifery and Healthcare offers a wide range of postgraduate courses. These range from flexible pre-registration courses for those wishing to train to become a registered nurse/midwife/paramedic, to post-registration courses for those wanting to boost their healthcare career, through the development of advanced/specialist practice.

If you're studying a pre-registration course, you'll spend 50% of your time studying and 50% learning in the clinical environment. We partner with a wide range of NHS Trusts and private, voluntary and independent sector healthcare organisations, to offer a diverse range of healthcare

placements, ensuring you are job ready. Our simulation centres equipped with the latest technology (virtual reality and immersive rooms), will help you practise/further enhance your clinical skills in a safe environment, whilst being supported by expert dedicated staff.

Our post-registration courses are designed to be flexible, enabling you to fit your studies around work and other commitments. You will learn from knowledgeable and skilled academics, many of whom conduct leading-edge healthcare research. Our courses provide the opportunity to learn along-side clinicians from a wide range of NHS Trusts and private healthcare organisations, enabling you to build networks, supporting your career progression.

We look forward to welcoming you to the College of Nursing, Midwifery and Healthcare.

## A connected education:

- Our links with some of the largest NHS Trusts in the country, provide excellent learning opportunities.

## Enhanced career prospects:

- A postgraduate qualification from CNMH is an investment in your future, facilitating a diverse and rewarding career path, that really makes a difference!

# Institute for Policing Studies

The Institute for Policing Studies (IPS) is an exciting new development within the University. Its creation reflects the increasing role of Higher Education in the policing community in London and the UK.

The policing landscape has changed dramatically over the last decade and police education has changed to meet the new demands of cybercrime, terrorism and to reflect the increasing “social” role that the police play in dealing with victims in the community.

The advent of cyber-enabled and cyber-dependent crime has provided fresh policing challenges alongside existing issues appearing in these new contexts. Leadership in policing routinely covers international boundaries and jurisdictions, but the core skills of policing remain.

The Institute promotes these aspects of professional policing while reflecting on the lessons learnt from historic investigations such as the Yorkshire Ripper case, the Stephen Lawrence enquiry and modern cases and critical incidents.

The scale and scope of what officers police in the UK is wide-ranging; from lost children to rural crime, from natural disasters such as flooding to public order events, from terrorism to dealing with victims of sexual assault and domestic violence. The British model of dealing with a serious crime such as homicide is world-class and the Institute’s staff have experience in major investigations in the UK, America, and the Middle East.

## A connected education:

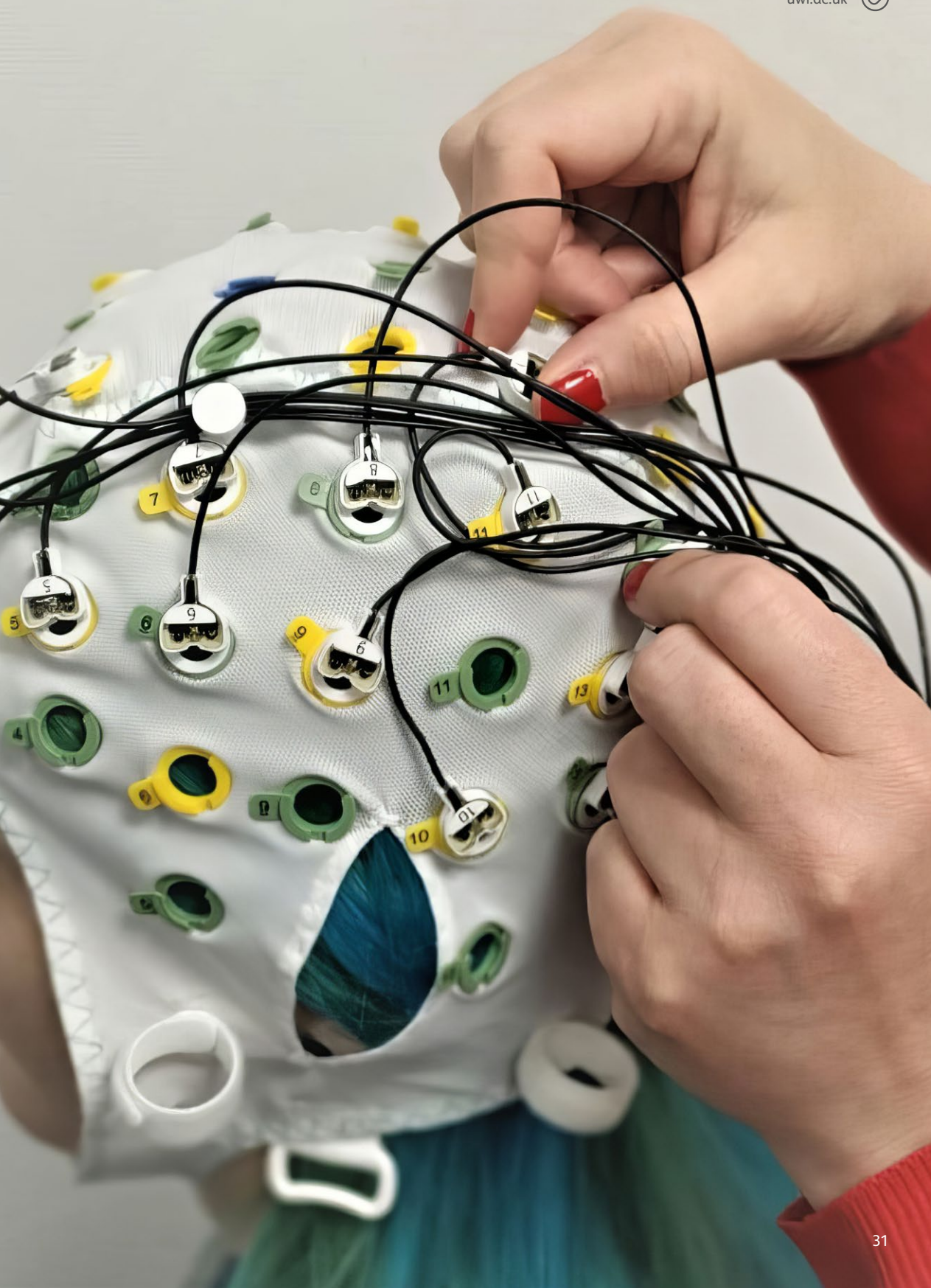
- Taught by staff with a strong operational background in policing and extensive academic experience.

## Enhanced career prospects:

- We pride ourselves on bridging academia and practical policing.







# Course index

## Centre for the Enhancement of Learning and Teaching

PgCert Professional Academic Practice.....	109
--	-----

## School of Biomedical Sciences

MSc Bioinformatics.....	44
MSc/PgDip/PgCert Dementia Studies: Contemporary Approaches to Practice.....	57
MSc Person-Centred Health and Social Care.....	107

## The Claude Littner Business School

MSc Business Analytics.....	47
MBA Consultancy for Innovation and Change.....	54
MSc Digital Marketing.....	59
MSc Finance and Accounting.....	62
MSc Finance and Economics.....	63
MSc Finance and Risk Management.....	64
MSc Finance and Sustainability.....	65
MSc Finance and Technology.....	66
MA Human Resource Management.....	71
PgDip Human Resource Management.....	72
MSc International Business Management.....	79
MSc Maritime Business Management.....	88
MSc Maritime Cyber Security.....	89
MSc Marine Engineering Management.....	90
MBA Masters in Business Administration.....	91
MA Strategic Financial Management (ACCA).....	114
PgCert Strategic Workforce Planning.....	115
MSc Sustainability Business Specialist.....	117

## School of Computing and Engineering

MSc Applied Project Management.....	41
MSc Artificial Intelligence.....	42
MSc Biomedical Engineering.....	45
MSc Civil and Environmental Engineering.....	48
MSc Civil Engineering.....	49
MSc Construction Project Management.....	53
MSc Cyber Security.....	56
MSc Digital Audio Engineering.....	58
MSc Electronic and Robotic Engineering.....	60
MSc Health Informatics.....	69
MSc Information Systems.....	75
MSc Mathematics and Statistics.....	92
MSc Software Engineering.....	113
MSc Structural Engineering.....	116

## London School of Film, Media and Design

MA/PgDip Advertising, Branding and Communication.....	39
MA/PgDip Brand Design and Innovation.....	46
MA Graphic Communication Design.....	68
MA Interior Environment Design.....	76
MA International Fashion Brand Management (three pathways).....	80

## London Geller College of Hospitality and Tourism

MSc/PgDip/PgCert Advanced Air Mobility Management .....	35
Executive MSc/PgDip/PgCert Air Transport Operations and Management .....	40
Executive MSc Aviation Data Analytics Management .....	43
MSc Food Business Management.....	67
MA International Tourism and Aviation Management.....	82
MA Luxury Hospitality Management.....	86
MSc Nutrition, Health and Wellbeing.....	104

## School of Human and Social Sciences

MA Criminology.....	55
MSc Health Psychology.....	70
MRes Psychology.....	110
MSc Psychology Conversion.....	111

## School of Law

LLM International Banking and Finance Law .....	77
LLM International Business and Commercial Law .....	78
LLM International Studies in Intellectual Property Law.....	81
LLM Legal Practice (LPC).....	83
PgDip Legal Practice Course (LPC).....	84
LLM Legal Practice (Top-up).....	85

## London College of Music

MA Acting and Theatre Making.....	34
MA Advanced Music Technology .....	37
MMus Composition .....	51
MMus Composition for Film and Television.....	52
MMus Electronic Music Composition.....	61
MA Music and Performing Arts Education.....	95
MA Music Industry Management and Artist Development.....	96
MMus Performance (Classical, Jazz, Popular).....	106
MA Record Production.....	112

## College of Nursing, Midwifery and Healthcare

MSc Advanced Clinical Practice .....	36
MSc Advancing Professional Practice .....	38
MSc Clinical Practice .....	50
MSc Improvement Science.....	73
MSc Infection Prevention and Control.....	74
MPH Master of Public Health.....	87
MMidwifery (2 years shortened).....	93
MMidwifery (3 years pre-registration) .....	94
PgDip Nursing (Adult).....	97
MSc Nursing (Adult) Blended Learning – Pre-registration.....	98
MSc Nursing (Adult) On Campus – Pre-registration .....	99
PgDip Nursing (Learning Disabilities) .....	100
MSc Nursing (Learning Disabilities) Blended Learning – Pre-registration.....	101
PgDip Nursing (Mental Health) .....	102
MSc Nursing (Top-up).....	103
MSc Paramedic Science – Pre-registration.....	105

## Institute for Policing Studies

MSc Policing.....	108
-------------------	-----



## MA Acting and Theatre Making

This course investigates your practice as an actor/creator and a theatre practitioner. It allows you to consider innovative approaches to performing and curating performance events.

### What you will study

You will investigate and develop your skills and knowledge of theatre languages, including text, music, space or physicality. You will observe creative processes, acting and embodiment from varying viewpoints, including the creation of original work using a variety of theatre languages, adaptation of existing material with dramatic potential and differing approaches to characterisation within broader socio-political, cultural and geographical contexts.

Whilst developing your theatre practice skills, you will also investigate the planning involved in studio practice, including the facilitation of workshops and leading rehearsals, and carry these through to curating and creating performance events. Throughout your studies, you will be supported by the London College of Music, enabling you to collaborate across subject areas.

### Where your career will take you

The aim is for you to become an independent theatre practitioner that can build or expand a career in theatre through creating and producing your work, but also applying your skills to interrelated activities such as theatre research, curating events, or facilitating workshops.

- Award  
Masters
- Duration  
Full-time 1 year/  
Part-time 2 years
- Start date  
February/September
- Location  
West London Campus

### Entry requirements



Please see page 139



Get in touch:

 **0800 036 8888**

 **courses@uwl.ac.uk**



## MSc/PgDip/PgCert **Advanced Air Mobility Management**

This unique masters course is designed for graduates to become leaders of change in the world of unmanned aerial vehicles (UAVs) and urban air passenger transport.

### What you will study

This course is designed for those wishing to pursue a career in the field of advanced air mobility (AAM), which encompasses unmanned aerial vehicles, small urban air passenger vehicles and regional passenger aircraft. Graduates will develop the skills, knowledge and expertise to become leaders of change with the vision to accelerate the expansion of the AAM sector in a safe and sustainable manner.

The course benefits from direct involvement from industry partners. A whole-systems perspective of the AAM sector is covered, from policy and regulations to vehicle design, airspace and physical infrastructure through to safety, security and operational planning.

Students have the opportunity to gain a UK CAA Flyer and Operator ID to fly a drone and model aircraft and can complete a capstone research project, studying an AAM-focused topic of their choice, or complete a 6-month internship within the AAM sector.

### Where your career will take you

After graduating, students are likely to find employment in areas such as infrastructure planning at airports and vertiports, airspace design and modernisation with regulatory and air traffic management organisations, drone operations, aviation and engineering consultancies.

- **Award**  
Masters/Postgraduate Diploma/  
Postgraduate Certificate
- **Duration**  
MSc part-time 18 months
- **Start date**  
February/September
- **Location**  
West London Campus  
Online (distance learning)

### Entry requirements



Please see page 139



Get in touch:

 **0800 036 8888**

 **courses@uwl.ac.uk**



## MSc Advanced Clinical Practice

This course has been designed for experienced UK registered health professionals with an advanced clinical practice focus to their role. The course will enable you to combine expert clinical skills with research, education and clinical leadership, specific to your clinical specialism.

### What you will study

This course combines the 'four pillars' of Advanced Clinical Practice, research, education, clinical skills and clinical leadership, to empower you to practice with autonomy in your scope of practice and manage complexity in both decision making and clinical presentations.

You will establish a clear professional identity, be able to identify key areas of improvement, and take leadership with regards to research-based projects focused on improving patient experiences.

### Where your career will take you

This course will prepare you to undertake an advanced practice role i.e. Advanced Clinical Practitioner, across a wide variety of healthcare settings.

- **Award**  
Masters
- **Duration**  
Part-time 3 years
- **Start date**  
February/September
- **Location**  
West London Campus/  
Berkshire Institute for Health

### Entry requirements



Please see page 139

- qualification of an equivalent standard
- have GCSE English and Maths (Grade 9-4/A\* - C) or Level 2 functional skills equivalents
- be a registered healthcare practitioner with a relevant professional body (NMC, HCPC\*) in the UK and have a minimum of three years post-qualifying experience
- be in a role that will allow you to develop advanced clinical practice skills.

\* Physiotherapists and Paramedics only

**nmc**  
Nursing &  
Midwifery  
Council

**hcpc** health & care  
professions  
council



Get in touch:

 **0800 036 8888**

 **courses@uwl.ac.uk**



## MA Advanced Music Technology

Would you like to expand the range of your music technology capabilities and explore new techniques?

### What you will study

Work in areas from music production to sound design, 3-D audio to sonic art and software development to game audio, often with embedded AI – taught by staff both active in the music industry and conducting high-level academic research.

Our pro-spec'ed studios have both digital and analogue consoles and advanced sound-production technologies, plus Dolby Atmos® and the incredible Pete Townshend synthesizer collection.

You will graduate with an enhanced skill set – giving you a distinct advantage when entering this competitive industry.

### Where your career will take you

Graduates have worked with recording/producing/mixing acts like Pharell Williams, Rolling Stones, Kendrick Lamar, Snarky Puppy, Imagine Dragons, Li'l Wayne, Dr Dre, Radiohead, Eminem, Rihanna, Beyoncé, Half-life Alyx, with alumni winning several Grammys and an Oscar.

- Award  
Masters
- Duration  
Full-time 1 year/  
Part-time 2 years
- Start date  
September
- Location  
West London Campus

### Entry requirements



Please see page 139



Get in touch:

 0800 036 8888

 [courses@uwl.ac.uk](mailto:courses@uwl.ac.uk)



## MSc Advancing Professional Practice

Extend your health or social care expertise through this innovative and flexible course, designed for experienced practitioners from a range of disciplines looking to progress within their role.

### What you will study

This course aims to develop your professional skills and knowledge, enabling you to make a significant contribution to health and social care delivery. You will develop skills in critical appraisal and decision making. You will also learn how to design strategies to manage complex scenarios and use evidence to generate innovative and creative solutions in your practice.

Designed to be distinct from the MSc Advanced Clinical Practice, it is aimed at those who are in/moving towards roles in leadership/management, or practitioners who are pursuing a clinical route (intensive care nursing, midwifery practice or mental health nursing).

### Where your career will take you

This course has been designed for experienced UK registered healthcare professionals, who are looking towards masters study to enable them to progress within their professional role.

- **Award**  
Masters
- **Duration**  
Part-time 4 years
- **Start date**  
September
- **Location**  
West London Campus/  
Berkshire Institute for Health

### Entry requirements



Please see page 139

- be a registered healthcare practitioner with a relevant professional body (NMC/ HCPC) in the UK
- be working in a role where you can apply your learning during the course and be supported
- ideally have a minimum of three years post-qualifying experience
- ideally have a degree, but we will consider applications from those without, in a senior professional role and able to map professional experience to Level 6 descriptors (equivalent to the final year of undergraduate study).

**nmc**  
Nursing &  
Midwifery  
Council

**hcpc** health & care  
professions  
council



Get in touch:

 **0800 036 8888**

 **courses@uwl.ac.uk**





## MA/PgDip Advertising, Branding and Communication

Whether you aspire to be a creative, strategist or account manager, this course will equip you with the knowledge and skills to work in the creative industries.

### What you will study

Our course seeks to provide a student-centred environment which is continually updated by current industry practice. We're committed to creating engaging and intellectually rich learning experiences, meaning you'll leave with a solid understanding of key concepts, methods, theories and practices that you can immediately apply in the workplace.

On completion of the degree, you'll be able to demonstrate critical analysis, creative thinking skills and problem solving. Under the guidance of tutors who have worked in the industry for many years, you'll develop the ability to create innovative and original branding and design solutions, advertising campaigns and communication-related strategies.

With an emphasis on employability, the course includes modules dedicated to helping you market yourself to the industry and find placements, internships and jobs.

### Where your career will take you

The course prepares you for a range of roles, including brand manager, art director, copywriter, designer, account manager, account planner, project manager, brand strategist and advertising planner. We encourage you to apply for internships and placements in the final semester.

- **Award**  
Masters/Postgraduate Diploma
- **Duration**  
MA full-time 14 months/  
PgDip full-time 1 year
- **Start date**  
September
- **Location**  
West London Campus


### Entry requirements



Please see page 139



Get in touch:

 **0800 036 8888**

 **courses@uwl.ac.uk**



## Executive MSc/PgDip/PgCert Air Transport Operations and Management

Already work in the aviation industry and want to advance your career? This course can help you accelerate your progression to more senior positions.

### What you will study

Whether you are looking to broaden and deepen your knowledge of the aviation industry, looking to change careers or looking to enhance and develop your skills to a managerial level, you will receive an exceptional teaching experience from industry-focused academics.

The online block delivery gives you the flexibility to incorporate learning as part of your lifestyle, at a pace that is manageable and enjoyable. Teaching is delivered in real-time as a live broadcast and recorded for you to review in your own time.

You will have the opportunity to gain skills and knowledge in contemporary aviation topics such as digital technology, sustainable development and crisis management. You will also have access to a wide range of online learning resources.

### Where your career will take you

The course is designed to accelerate your career to more senior roles in the aviation industry, in areas such as operational management and logistics and commercial management.

- **Award**  
Masters/Postgraduate Diploma/  
Postgraduate Certificate
- **Duration**  
Executive MSc part-time  
18 months/  
PgDip part-time 1 year/  
PgCert part-time 6 months
- **Start date**  
February/September
- **Location**  
Online delivery

### Entry requirements



Please see page 139



Get in touch:

 **0800 036 8888**

 **courses@uwl.ac.uk**



## MSc Applied Project Management

On this practical course, you will examine the role of applied project management in specific sectors and discover how to plan, control, monitor and deliver successful projects.

### What you will study

In recent years there has been a growing awareness and appreciation of the benefits of using project management techniques across a wide range of business settings.

On this career-oriented applied project management course, you will learn how to use structured concepts and frameworks to tackle unstructured, complex real-world scenarios. You can expect to see core theories reflected and tested in your case studies and in-course assessments.

The course will help you gain the generic skills and understanding that you need to fulfil your particular business and organisational needs.

In addition, you will gain experience with supporting software such as Microsoft Project Management.

### Where your career will take you

Graduates will be ready to join the project management team in many different organisations – from SMEs (small and medium-sized enterprises) to the largest global corporations.

- **Award**  
Masters
- **Duration**  
Full-time 1 year/  
Full-time with internship 20 months/  
Extended Masters and Enhanced Extended Masters 15 months/  
Part-time 2 years
- **Start date**  
September
- **Location**  
West London Campus

### Entry requirements



Please see page 139



Get in touch:

 0800 036 8888

 [courses@uwl.ac.uk](mailto:courses@uwl.ac.uk)



## MSc Artificial Intelligence

If you would like to be at the forefront of the ongoing technological revolution then our MSc Artificial Intelligence course is for you.

### What you will study

Theories and fundamentals of AI and machine learning will be taught in both lecture and workshop formats. You will be supported through participation in industry and research seminars, group discussions, presentations and coursework.

On this course you will:

- develop a systematic understanding of the AI domain
- gain in-depth knowledge of AI techniques and develop intellectual skills to create well-justified solutions
- develop expertise to plan, design and implement appropriate AI solutions in practical scenarios
- gain substantial practical experience, and learn to prepare for the future challenges of AI
- gain a solid foundation for applied research in artificial intelligence
- prepare for work in a rapidly evolving and technologically diverse environment.

### Where your career will take you

This degree provides you with the skills to meet the needs of the industries that are recognising the transformative potential of AI, from healthcare to manufacturing to the automotive industry.

- **Award**  
Masters
- **Duration**  
Full-time 1 year/  
Part-time 2 years
- **Start date**  
September
- **Location**  
West London Campus

### Entry requirements



Please see page 139

2:2 or above from a UK university or equivalent in computing or other STEM-based disciplines.



Get in touch:

 **0800 036 8888**

 **courses@uwl.ac.uk**



## Executive MSc Aviation Data Analytics Management

This is a unique course specifically designed for ambitious professionals who want to advance their careers in the industry by mastering the strategic relevance of data in aviation.

### What you will study

What distinguishes this course is its unique approach to bridging the gap between data processing analysis and effective decision implementation, making it an indispensable resource in the era of data-driven decision-making within aviation.

The course curriculum covers key aspects of data analysis, from database management to data visualisation. You will learn about operational research and statistical methods and will have the opportunity to develop your programming skills and to explore the ethical and legal aspects of aviation data.

You will analyse a vast spectrum of strategic aviation applications, from network planning to crew optimisation, covering both the commercial and the operational side of aviation.

### Where your career will take you

This course will support career progression for executive roles in fields such as aviation, regulatory services, technology, consultancy and research.

- **Award**  
Masters
- **Duration**  
Part-time 18 months
- **Start date**  
February/October
- **Location**  
Online (distance learning)

### Entry requirements



Please see page 139



Get in touch:

 **0800 036 8888**

 **courses@uwl.ac.uk**



## MSc Bioinformatics

This masters provides the skills to analyse, interpret and use biological data to inform and improve healthcare and health outcomes.

### What you will study

This bioinformatics masters bridges the interfaces between genomics, computing and healthcare.

The course covers core principles, as well as statistical, computing and knowledge management skills. In addition, it will equip you with the technical ability you need to analyse genetics and genomics data and the underlying health associations between gene variants, disease susceptibility and drug response.

In the Bioinformatics and Advanced Bioinformatics modules, you will work in interdisciplinary teams as much as possible. You will learn from experts in computing, healthcare, mathematics and statistics, whose current practice and research will enhance your postgraduate experience.

### Where your career will take you

On graduation, you could go on to work in areas such as clinical informatics, pharmaceutical and biotech industries, personal medicine and wellbeing, agricultural science and research, academic research, the food industry or public health.

- **Award**  
Masters
- **Duration**  
Full-time 1 year/  
Part-time 2 years
- **Start date**  
September
- **Location**  
West London Campus

### Entry requirements



Please see page 139

You should have an honours degree (2:2 or above) in a health-related subject.



Get in touch:

 **0800 036 8888**

 **courses@uwl.ac.uk**



## MSc Biomedical Engineering

As well as playing a key role in our efforts to live healthier, longer and happier lives, technology improves diagnostics, treatments and management of many health problems.

### What you will study

Through a range of specialist modules, our MSc course delivers intensive training in the fundamentals of Biomedical Engineering and will supply you with the technical skills required to excel in this rapidly growing industry.

By using standard and innovative technology, alongside enhanced teaching and assessment methods, you will build a comprehensive body of knowledge covering areas including:

- basic understanding of biosignals and their processing
- a range of Healthcare technologies for diagnostics, treatments, lifestyle management and digital health
- understanding of the statistical concepts and limits of various technologies used in medicine
- regulatory, ethical and governance issues around Healthcare Technology.

### Where your career will take you

There are many potential areas of employment open to Biomedical Engineering graduates including digital health, medical device industry and consultancy.

- **Award**  
Masters
- **Duration**  
Full-time 1 year
- **Start date**  
September
- **Location**  
West London Campus

### Entry requirements



Please see page 139



Get in touch:



0800 036 8888



courses@uwl.ac.uk



## MA/PgDip Brand Design and Innovation

Whether you aspire to be a designer, strategist or account manager, this course will equip you with the knowledge and skills to work in the creative industries.

### What you will study

Our course seeks to provide a student-centred environment which is continually updated by current industry practice. We're committed to creating engaging and intellectually rich learning experiences, meaning you'll leave with a solid understanding of key concepts, methods, theories and practices that you can immediately apply in the workplace.

On completion of the degree, you'll be able to demonstrate critical analysis, design thinking, creative skills and problem solving. Under the guidance of tutors who've worked in the industry for many years, you'll develop the ability to create innovative and original branding and design solutions and innovative communication-related strategies.

The emphasis is on employability and the course includes modules dedicated to helping you market yourself to the industry and find placements, internships and jobs.

### Where your career will take you

Upon graduation, areas you could go into include communication design, product innovation, art direction, data visualisation, design research, advertising or creative management.

- **Award**  
Masters/Postgraduate Diploma
- **Duration**  
MA full-time 14 months/  
PgDip full-time 1 year
- **Start date**  
September
- **Location**  
West London Campus


### Entry requirements



Please see page 139



Get in touch:

 **0800 036 8888**

 **courses@uwl.ac.uk**



## MSc Business Analytics

Whether you want to kick-start a brand-new career, boost your existing experience, or change career direction, studying MSc Business Analytics will help you achieve your goals.

### What you will study

This course enables you to benefit from the expertise of direct contacts in the industry who will bridge the gap between academic rigour and practical relevance. Teaching delivers a pastoral approach and provides a unique hands-on learning experience for you.

Throughout, the course embeds and develops core technical skills and approaches, which bolster business analytics training, key processes and methodologies. You will be able to fine-tune these acquired techniques through projects that require these skills to be embodied and integrated holistically.

By the end of the course you will be able to apply your knowledge and skills to complex business projects, demonstrate your acquired technical abilities in business analytics, conduct independent research and make practical recommendations on real-life business issues.

### Where your career will take you

The course will provide a platform for careers with local and international companies as well as high-growth businesses confronting world-scale challenges.

- **Award**  
Masters
- **Duration**  
Full-time 1 year
- **Start date**  
February/September
- **Location**  
West London Campus

### Entry requirements



Please see page 139

Students should have an honours degree (2:2 or above) in a quantitative subject area (or in any discipline with elements of either mathematics or statistics related modules). Students not holding a first degree but with practical industry experience of over 5 years will be offered an interview so that their eligibility to embark on the course can be assessed.



Get in touch:

 **0800 036 8888**

 **courses@uwl.ac.uk**



## MSc Civil and Environmental Engineering

This course equips you with advanced civil engineering skills while considering sustainable solutions and environmental responsibility.

### What you will study

This course provides you with a platform to advance your analytical skills in core subject areas such as structural analysis, sustainability, geotechnics, and hydraulics.

Throughout the course, you will learn to employ modern IT techniques to solve complex problems.

You will have several opportunities to design solutions to civil engineering challenges, both individually and as part of a team.

Your final dissertation will provide you with the opportunity to conduct research at the postgraduate level in a specific area of civil and environmental engineering, structural engineering, or construction management.

Throughout your studies, you will have access to a dedicated computing laboratory. Additionally, the University library offers a wealth of resources to support both the academic and professional aspects of the course.

### Where your career will take you

Once you graduate, you could go on to work with consulting civil engineering companies, structural engineering firms, contractors, local/national government and utility companies.

- **Award**  
Masters
- **Duration**  
Full-time 1 year/  
Full-time with internship  
20 months/  
Extended Masters and Enhanced  
Extended Masters 15 months/  
Part-time 2 years
- **Start date**  
September
- **Location**  
West London Campus

### Entry requirements



Please see page 139



Get in touch:

 **0800 036 8888**

 **courses@uwl.ac.uk**





## MSc Civil Engineering

If you are looking for a pathway to become a professional engineer in various fields of contemporary civil engineering, this course is for you.

### What you will study

This course will advance your analytical skills, research knowledge and technical understanding and focuses on the use of industrially relevant applications and IT skills in the main subject areas of civil engineering, including:

- structures
- materials
- geotechnics
- hydraulics
- transport infrastructure engineering
- construction management.

The course will also enable you to use analytical methods and modelling tools for the analysis and design of civil engineering structures, while providing opportunities for you to demonstrate your ability to apply relevant analytical and experimental skills for the analysis and design of civil engineering structures under technical uncertainty.

### Where your career will take you

MSc graduates typically secure positions with civil engineering contractors, design consultancies, surveying subcontractors, utilities companies and structural engineering organisations, while others decide to work in education.

- **Award**  
Masters
- **Duration**  
Full-time 1 year/  
Extended Masters and Enhanced  
Extended Masters 15 months
- **Start date**  
September
- **Location**  
West London Campus

### Entry requirements



Please see page 139



Get in touch:

 **0800 036 8888**

 **courses@uwl.ac.uk**

 **CIHT**

 **INSTITUTE OF  
HIGHWAY  
ENGINEERS**

 **ice**  
Institution of Civil Engineers



**THE PWI**



## MSc Clinical Practice

This course is designed to support healthcare practitioners in developing the knowledge and skills to work effectively in their chosen specialism.

### What you will study

This clinically focused course has been developed for UK healthcare professionals who:

- are recently qualified and wish to develop their specialist knowledge and skills
- wish to extend their skill set in a new area of clinical practice.

The flexible structure of the course means it can be tailored to meet your individual needs. You can opt for one of three awards; PgCert, PgDip or the MSc.

The course allows you to choose from a range of optional modules to suit your clinical needs.

### Where your career will take you

This course improves your career prospects by providing you with the opportunity to further enhance your clinical knowledge, skills and confidence in your clinical practice.

- **Award**  
Masters/Postgraduate Diploma/  
Postgraduate Certificate
- **Duration**  
MSc part-time 3 years  
(up to 4 years maximum)/  
PgDip part-time 2 years  
(up to 3 years maximum)/  
PgCert part-time 1 year  
(up to 2 years maximum)
- **Start date**  
September
- **Location**  
West London Campus/  
Berkshire Institute for Health

### Entry requirements



Please see page 139

- be registered with a UK professional body (Health and Care Professions Council or Nursing and Midwifery Council)
- be based in the UK
- If you don't have a degree but you have a Diploma in Higher Education and relevant professional experience, we encourage you to apply. Your application will be considered on an individual basis and you will be asked to demonstrate your experience through a portfolio of work.

**nmc**  
Nursing &  
Midwifery  
Council

**hpc** health & care  
professions  
council



Get in touch:

**0800 036 8888**

**courses@uwl.ac.uk**



## MMus Composition

This course represents a creative hub for innovative, forward-thinking musical minds that, in the spirit of practice-as-research, join practical composition and academic inquiry.

### What you will study

This course gives you excellent opportunities to develop your technical abilities in the fields of composition, orchestration and production, enabling you to strengthen and refine your own artistic voice and expand your musical and dramatic vocabulary.

The course offers studio-based work, as well as an exploration of audio and midi programming, which you will be able to implement in your own applied compositions, including screen, digital, film and other collaborative types of work.

Alongside practical exploration, the course offers the opportunity to broaden your scholarly knowledge in a variety of composition-related subject areas, such as score analysis, conducting and interdisciplinary applications, enabling you to converge your academic research towards a supervised masters project.

### Where your career will take you

You could follow in the footsteps of our graduates who have achieved success working on a diverse range of projects for institutions such as the BBC, The National Theatre and Purcell School, progressing directly into the industry as composers, arrangers, music directors, editors or production assistants.

- **Award**  
Masters
- **Duration**  
Full-time 1 year/  
Part-time 2 years
- **Start date**  
February/September
- **Location**  
West London Campus  
Online (distance learning)

### Online Study Option

To make our MMus Composition course as accessible as possible, we also offer a distance-learning version of the course which can be studied online.

### Entry requirements



Please see page 139

- advanced musical knowledge
- a written statement.



Get in touch:

 0800 036 8888

 [courses@uwl.ac.uk](mailto:courses@uwl.ac.uk)



## MMus Composition for Film and Television

This course represents a creative hub for innovative, forward-thinking musical minds that join practical composition and academic inquiry in the spirit of practice as research.

### What you will study

This course gives you excellent opportunities to develop your technical abilities in the fields of composition, orchestration and production, enabling you to strengthen and refine your own artistic voice and expand your musical and dramatic vocabulary. The course offers studio-based work, as well as an exploration of audio and midi programming, which you will be able to implement in your own applied compositions, including screen, digital, film and other collaborative types of work.

Alongside practical exploration, there is opportunity to broaden your scholarly knowledge in a variety of composition-related subject areas, such as score analysis, conducting and interdisciplinary applications, enabling you to converge your academic research towards a supervised masters project.

### Where your career will take you

You could follow in the footsteps of our graduates who have achieved success working on a diverse range of projects for institutions such as the BBC, Netflix, The National Theatre, Sky, Channel 4 and the British Film Institute. Most students progress directly into the industry as composers, orchestrators, arrangers, production assistants.

- **Award**  
Masters
- **Duration**  
Full-time 1 year/  
Part-time 2 years
- **Start date**  
February/September
- **Location**  
West London Campus  
Online (distance learning)

### Online Study Option

To make our MMus Composition course as accessible as possible, we also offer a distance-learning version of the course which can be studied online.

### Entry requirements



Please see page 139



Get in touch:

 **0800 036 8888**

 **courses@uwl.ac.uk**



## MSc Construction Project Management

This course is designed to provide you with the knowledge and skills you need to succeed in today's globalised and ever-changing construction industry.

### What you will study

This course provides a broad, thorough foundation in the fundamentals required for successfully organising and managing construction projects, such as strong communication skills, comprehensive knowledge of the building process and the ability to problem-solve. It includes study of the latest technology implementation and innovation, such as BIM and 3D printing.

The course will equip you with advanced knowledge and skills in:

- sustainable built environment development
- construction project management
- integrated and interoperable information management in construction projects
- environmentally-friendly design and construction
- sustainable financial and procurement management in construction projects.

### Where your career will take you

You will be qualified for a career in a broad range of management careers in the construction industry. You could work for building contractors or suppliers in areas such as project management, commercial management, design management and construction site management.

- **Award**  
Masters
- **Duration**  
Full-time 1 year/  
Extended Masters and Enhanced  
Extended Masters 15 months/  
Part-time 2 years
- **Start date**  
September
- **Location**  
West London Campus

### Entry requirements



Please see page 139



Get in touch:

 **0800 036 8888**

 **courses@uwl.ac.uk**





## MBA Consultancy for Innovation and Change

Do you feel ready for a new challenge that has the potential to transform your career?

### What you will study

This specialist MBA in Consultancy for Innovation and Change consists of four modules. In the first, you will work with your peers on a simulated project, giving you the opportunity to apply newly acquired skills and knowledge in a safe environment.

In the second, it's about applying what you've learned to the real world. You'll be working with your peers on a real-life client project; UWL's academic faculty and roster of experienced consultants will support and guide you through it.

The third gives you the opportunity to work towards becoming an expert on a chosen subject. You will develop an evidence-based, innovative solution that adds value to organisations.

In the fourth, we equip you with the skills required to successfully influence stakeholders and win the hearts and minds of a real-life boardroom, made up of investors and business owners.

### Where your career will take you

This course will give you the leadership skills needed to design and implement innovation and change at a strategic level, be this in major corporations, start-ups or SMEs.

- **Award**  
Masters
- **Duration**  
Full-time 18 months
- **Start date**  
February/September
- **Location**  
West London Campus

### Entry requirements



Please see page 139

- a minimum of 3+ years of professional work experience.
- In addition, we are looking for applicants with passion, imagination and the ability to follow through on commitments. You will have great interpersonal qualities and be:
- generous, supportive of others, decisive and imaginative
  - capable of engaging with the world in a reflective way and value testing out new ideas
  - a collaborative learner who wants to push innovation boundaries with others.



Get in touch:

 **0800 036 8888**

 **courses@uwl.ac.uk**





## MA Criminology

This dynamic and flexible course allows you to focus on your area of interest, whether that's global crime, terrorism or criminal investigations.

### What you will study

You will be encouraged to develop a critical understanding of the key concepts, ideas and theories that underpin contemporary issues and political debates concerning the wider criminological discipline.

You will learn from a dedicated and diverse team of scholars who are internationally renowned experts in their subject. All teaching staff on this course have doctorates or extensive professional experience in the criminology/criminal justice sector.

You will also benefit from joining our wider research community at the Cybersecurity and Criminology Centre.

### Where your career will take you

You could pursue a career with a variety of organisations, including intelligence services, the Home Office, or policing and police research.

- **Award**  
Masters
- **Duration**  
Full-time 1 year
- **Start date**  
September
- **Location**  
West London Campus

### Entry requirements



Please see page 139

You can also apply if you have reached a high level in a criminal justice field of work (eg police inspector level or equivalent), or if you are a specialist in a criminal justice related occupation with extensive work experience. All applications are considered individually.



Get in touch:

 **0800 036 8888**

 **courses@uwl.ac.uk**



## MSc Cyber Security

This course will prepare you for the challenge of keeping IT environments safe and secure in a world where data is constantly under attack.

### What you will study

Through this course you will be geared up for a professional career in cyber security. You will gain a practical understanding of issues surrounding the design, analysis and implementation of modern secure IT systems in an industry context.

Along the way you will develop an appreciation of commercial and open source cyber security equipment, software and services based on industry standard technologies. In addition, you will discover how cyber security systems are designed and constructed, and the impact this technology has on organisations.

You will gain the skills you need to work effectively in a business environment and provide a solid basis for cyber security research and development.

### Where your career will take you

You will have clear routes into a number of career opportunities, especially in the Information and Communications Technology (ICT) industry and in organisations that are data and knowledge intensive.

- **Award**  
Masters
- **Duration**  
Full-time 1 year/  
Full-time with Internship 16 months/  
Extended Masters and Enhanced Extended Masters 15 months/  
Part-time 20 months
- **Start date**  
February, April, September
- **Location**  
West London Campus

### Entry requirements



Please see page 139



Get in touch:

 **0800 036 8888**

 **courses@uwl.ac.uk**



## MSc/PgDip/PgCert **Dementia Studies:** **Contemporary Approaches to Practice**

This is an interdisciplinary course that offers cutting-edge knowledge about dementia and developments in care and service provision.

### What you will study

This course is designed for those involved in the delivery of health and social care for people living with dementia. You will learn about theoretical perspectives, research and practice-based evidence underpinning dementia care and service design across health and social care settings. You will have opportunities to explore and create evidence-based solutions for leading positive changes in practice and improving the lives of people with dementia and their families.

CPD courses:

- Dementia Policy and Influences in Practice
- Global Perspectives in Dementia
- Dementia: Culture and Society
- Evidence-based Approaches to Dementia in Health and Social Care
- Research Methods in Dementia
- Leadership and Innovation in Dementia Care.

### Where your career will take you

This course will provide you with the skills and specialist knowledge to become an effective leader in dementia care. Alternatively, you could progress to a research or academic role, or continue to a PhD.

- **Award**  
Masters/Postgraduate Diploma/  
Postgraduate Certificate
- **Duration**  
Full-time 1 year/  
Part-time up to 4 years
- **Start date**  
February/September
- **Location**  
West London Campus

### Entry requirements



Please see page 139



Get in touch:

 **0800 036 8888**

 **courses@uwl.ac.uk**



## MSc Digital Audio Engineering

Dive into the intersection of audio engineering and cutting-edge tech, mastering digital audio systems with a special focus on AI and machine learning.

### What you will study

Unlock the future of audio by merging engineering, computer science and creative practice. This course goes beyond traditional audio engineering, delving into machine learning and AI to solve complex audio challenges.

Our teaching approach combines lectures, hands-on workshops and case studies, to provide a nuanced understanding of both theoretical and practical skills. Coursework examples include audio plug-ins (EQ, dynamics, distortion, synthesizers and samplers), embedded audio processing and generation, AI-driven audio recognition, processing and generation, or spatial audio techniques.

This degree has been accredited with Partial Chartered Engineering status (Partial CEng) by the Institute of Engineering and Technology under licence from the UK regulator, the Engineering Council.

### Where your career will take you

Embark on an expansive career that goes beyond the studio. Leverage your expertise for roles in AI-driven music production, game audio, surround sound, music recommendation or automotive audio. An accredited degree from our programme opens doors to both conventional and disruptive sectors, from sound design for VR experiences to R&D roles in emerging tech companies.

- **Award**  
Masters
- **Duration**  
Full-time 1 year/  
Part-time 2 years
- **Start date**  
September
- **Location**  
West London Campus

### Entry requirements



Please see page 139



Get in touch:

 **0800 036 8888**

 **courses@uwl.ac.uk**

## MSc Digital Marketing

We will equip you with the knowledge and skills required to become an effective digital-first marketer capable of strategic decision making and creative problem solving.

### What you will study

Through a series of specially designed, practical hands-on workshops, expert guest speakers, simulations, and industry case studies we provide:

- a modern approach to the teaching of digital concepts, from a broad range of avenues including strategic marketing, leadership, e-commerce, consumer behaviour and social media marketing and content creation
- a thorough curriculum aimed at the optimal utilisation of digital tools, to enhance data analysing and research skills, along with providing insights to improve marketing performance
- hands-on practical learning through modern assessments and industry-inspired projects
- the opportunity to develop and further enhance skills like creative problem solving, innovative thinking, and the ability to work independently and as a team
- knowledge of how the digital customer experience is integral to delivering effective digital campaigns.

### Where your career will take you

This course is designed to help you become a confident digital marketer in either a new or existing career where digital marketing skills will be a core requirement.

- **Award**  
Masters
- **Duration**  
Full-time 12-16 months/  
Extended Masters and Enhanced  
Extended Masters 15-19 months
- **Start date**  
February/September
- **Location**  
West London Campus

### Entry requirements



Please see page 139

- OR a Chartered Institute of Marketing (CIM) Professional Diploma.

UWL also considers applications from those who do not have a formal qualification but have extensive marketing experience. In this case, the applicant would be invited to interview and may also be required to undertake a short written paper in order to assess their suitability for the academic demands of the course.



Get in touch:

 0800 036 8888

 [courses@uwl.ac.uk](mailto:courses@uwl.ac.uk)



## MSc Electronic and Robotic Engineering

Our Robotics course is designed to equip you with the knowledge, skills, and expertise needed to excel in this rapidly evolving area of engineering.

### What you will study

The course will start with fundamental concepts of robotics systems, and progress to the development of more advanced topics in robotic motion, vision and autonomy.

You will learn to integrate these concepts into real-world scenarios by designing and implementing innovative solutions. At the end of the course, you will have developed a comprehensive skillset encompassing:

- mechatronics and automation principles
- robotic systems design
- robotic systems programming.

### Where your career will take you

This course will equip you with the skills needed to tackle complex engineering problems, contribute to modern research and development challenges, and pursue careers in the diverse and rapidly growing robotics and automation industry.

- **Award**  
Masters
- **Duration**  
Full-time 1 year
- **Start date**  
September
- **Location**  
West London Campus

### Entry requirements



Please see page 139



Get in touch:

 **0800 036 8888**

 **courses@uwl.ac.uk**



## MMus Electronic Music Composition

This course will be of special interest to composers of electronic music in the traditional sense and to contemporary artists who combine this role with that of engineer, musician, producer and DJ.

### What you will study

This is an industry-focused electronic music course, and it assumes you have a level of competence in composition and/or music sequencing and production.

You will study a broad range of electronic music, from popular electronic dance music styles to art forms such as electroacoustic music. Your composition studies will include one-to-one tutorials in a specialised area of electronic music.

You will also examine the history of, and important concepts in, electronic music, along with theory and practice in sequencing, sound synthesis, sampling and production techniques, as well as gaining theoretical knowledge and practical experience in music composition and sound design for video games.

A number of options allow for further exploration in a variety of fields, including immersive audio, the use of Max/MSP and Max for Live, interactive live sound installations and live performance.

### Where your career will take you

Upon graduation, you could go on to work as a composer, sound designer or remixer.

- **Award**  
Masters
- **Duration**  
Full-time 1 year/  
Part-time 2 years
- **Start date**  
September
- **Location**  
West London Campus

### Entry requirements



Please see page 139



Get in touch:

 **0800 036 8888**

 **courses@uwl.ac.uk**



## MSc Finance and Accounting

If you are a Finance or Business graduate and interested in pursuing a career in accounting and finance, this course will give you the opportunity to gain more specialist knowledge.

### What you will study

The MSc Finance suite of courses is designed to equip you with the knowledge and technical skills required to meet the needs and demands of the profession and make a more meaningful contribution to the organisations you work for.

The various pathways will provide you with further opportunities to pursue rewarding careers by exploring areas relevant to your chosen subject specialism.

The MSc Finance and Accounting is an engaging course that will develop your strategic thinking and critical understanding of the main principles of accounting, finance, taxation and auditing, including contemporary issues and developments in the profession.

UWL's suite of finance courses opens a range of opportunities in a multitude of industries across the world, and our graduates are currently employed at banks and financial institutions, management consultancy firms, five star hotel chains and healthcare organisations.

### Where your career will take you

Once you graduate with an MSc Finance and Accounting you will be ready to apply for senior roles in accountancy.

- **Award**  
Masters
- **Duration**  
Full-time 1 year/  
Extended Masters and Enhanced  
Extended Masters 15 months
- **Start date**  
February/September
- **Location**  
West London Campus

### Entry requirements



Please see page 139



Get in touch:

 **0800 036 8888**

 **courses@uwl.ac.uk**





## MSc Finance and Economics

The MSc Finance and Economics course has been designed to equip you with the knowledge and technical skills required to meet your goals and make a meaningful contribution to the organisations your work for.

### What you will study

An MSc Finance and Economics degree will equip you with the economic and financial knowledge and skills required to build a strong career in the business and finance sectors. Through specialist modules such as Quantitative Approaches to Economic Analysis, and Economic Theory, you will be able to address strategic challenges faced by business organisations operating in competitive national and global markets.

If you are a Business or Economics graduate and interested in pursuing a career in economics, this course will give you the opportunity to gain more specialist knowledge. When you study economics at the University of West London, you will have direct contact with our course tutors who have extensive theoretical knowledge and industry experience. Their combined expertise will support your professional development throughout the course.

### Where your career will take you

Thanks to our West London location and our longstanding reputation, we have formed strong connections with a number of potential employers.

- **Award**  
Masters
- **Duration**  
Full-time 1 year/  
Extended Masters and Enhanced  
Extended Masters 15 months
- **Start date**  
February/September
- **Location**  
West London Campus

### Entry requirements



Please see page 139



Get in touch:

 **0800 036 8888**

 **courses@uwl.ac.uk**



## MSc Finance and Risk Management

The MSc Finance suite of courses is designed to equip you with the knowledge and technical skills required to meet the needs and demands of a career within various facets of finance and risk.

### What you will study

The MSc Finance and Risk Management course will provide you with a well-grounded knowledge and understanding of key concepts and principles that support and inform corporate financial and strategic decision-making and is best suited for those interested in investments and portfolio management.

UWL's suite of finance courses opens up a range of opportunities in a multitude of industries across the world, and our graduates are currently employed at banks and financial institutions, management consultancy firms, five-star hotel chains and healthcare organisations.

### Where your career will take you

If you are a Finance or Business graduate with strong numerical skills and interested in pursuing a career in investment banking, portfolio management, risk analysis and the like, then this course, which has been created with input from industry professionals, will enable you to acquire the skills and knowledge required by employers in this field.

- **Award**  
Masters
- **Duration**  
Full-time 1 year/  
Extended Masters and Enhanced  
Extended Masters 15 months
- **Start date**  
February/September
- **Location**  
West London Campus

### Entry requirements



Please see page 139

- A level Mathematics (or equivalent).



Get in touch:

 **0800 036 8888**

 **courses@uwl.ac.uk**



## MSc Finance and Sustainability

This course aims to create highly sought-after “sustainable finance professionals” who are essential in helping organisations across all sectors create long-term value for all stakeholders.

### What you will study

This course will cover the interesting overlap between finance and sustainability and show how organisations can endeavour to improve their overall sustainability practices. Some of the topics covered will include:

- management skills for finance professionals
- sustainable strategy
- sustainability frameworks disclosures and analytics
- corporate financial reporting
- corporate financial management
- business statistics and forecasting.

### Where your career will take you

Upon completing this course, you can expect to enter an exciting career in positions such as sustainable finance manager, financial services, sustainable finance manager, environmental and social due diligence, sustainable finance manager and senior associate – sustainable finance.

- **Award**  
Masters
- **Duration**  
Full-time 1 year
- **Start date**  
February/September
- **Location**  
West London Campus

### Entry requirements



Please see page 139



Get in touch:

 **0800 036 8888**

 **courses@uwl.ac.uk**



## MSc Finance and Technology

This course enables students to become the new generation of fintech strategists in an era of accelerating digital transformation.

### What you will study

In this course you will study a range of areas which will prepare you for a career working in finance and technology. For example, you will learn management skills, Big Data analytics, blockchain and decentralised finance, corporate financial reporting, business statistics and forecasting and corporate financial management.

### Where your career will take you

You could enter a range of careers after completing this course, for example: finance data analyst, business insights analysts, senior financial planning and analysis manager.

- **Award**  
Masters
- **Duration**  
Full-time 1 year
- **Start date**  
February/September
- **Location**  
West London Campus

### Entry requirements



Please see page 139

- A level Mathematics (or equivalent).



Get in touch:

 **0800 036 8888**

 **courses@uwl.ac.uk**



## MSc Food Business Management

(Internship option available)

As demand for highly skilled employees in the industry continues to increase, this food business management course will equip you with the ability to design, manage and lead developments in the food business.

### What you will study

Led by a team with expertise across food and hospitality, this course takes an innovative approach. You will examine topics ranging from management theory and practice to food supply chain management.

The course will help you to approach business challenges from a global perspective and assess situations from financial, commercial, societal and cultural standpoints. We embrace product innovation while remaining aware of the ethical and nutritional responsibility of business in modern society.

You will learn to find innovative solutions to help you promote food businesses. You will also come to understand how to develop action plans based on theoretical frameworks that you will be able to apply throughout your career to manage change effectively.

### Where your career will take you

This course will deliver professional development opportunities to senior managers which can enhance promotion prospects, open up new career opportunities and create greater long-term career security.

- **Award**  
Masters
- **Duration**  
Full-time 1 year/  
Full-time with internship  
18 months/  
Extended Masters and Enhanced  
Extended Masters 15 months/  
Part-time 2 years
- **Start date**  
February/September
- **Location**  
West London Campus

### Entry requirements



Please see page 139



Get in touch:

 **0800 036 8888**

 **courses@uwl.ac.uk**



## MA Graphic Communication Design

Whether you aspire to be a designer, strategist or creative entrepreneur, this course will equip you with the knowledge and skills to work in the creative industries.

### What you will study

Through a multidisciplinary and critical approach to graphic design, you will be able to combine AI and other emerging technologies with traditional graphic design methods to develop innovative creative-thinking, entrepreneurial skills and research-led projects.

The course will equip you with a combination of studio practice, technological advancement, design theory and research skills relevant to graphic design contexts. Through a set of practice modules focused on typographic communication, collaborative practice for social change and design strategy, you'll explore visual and multisensory forms of communication to convey social, political and societal messages in imaginative and professional ways.

With open-ended assignments and some option modules, you will be able to tailor the course to your needs and build a portfolio that reflects your personal development prospects.

### Where your career will take you

Upon graduation, roles you could go into include graphic designer, art or creative director, design strategist, UI/UX designer, production designer for TV, film or theatre, typographer, researcher or creative entrepreneur.

- **Award**  
Masters/Postgraduate Diploma
- **Duration**  
Full-time 1 year/  
Part-time 2 years (or max. period of registration)
- **Start date**  
September
- **Location**  
West London Campus


### Entry requirements



Please see page 139



Get in touch:

 **0800 036 8888**

 **courses@uwl.ac.uk**



## MSc Health Informatics

The initiative to digitise health and genomics information has created a strong demand for medical informatics professionals.

### What you will study

This course will provide you with the broad grounding you need for a range of careers as a health informatics or bioinformatics practitioner in the public and private sectors, within the UK or overseas.

We have designed this degree for graduates with analytical and inquisitive minds who want to work in professional roles that encompass computing and biology, medicine or healthcare.

Your studies will help you to develop the Information Communications Technology (ICT) skills and knowledge required to support and improve health and healthcare delivery.

You will learn about the information systems used to manage healthcare, knowledge and data management and leadership and management competence. Your dissertation will allow you to focus on an area of particular interest and apply what you have learnt on the course.

### Where your career will take you

This course will prepare you for a wide range of careers within the public and private health sectors. You could work in clinical informatics, personalised medicine, clinical bioinformatics and many more!

- **Award**  
Masters
- **Duration**  
Full-time 1 year/  
Extended Masters and Enhanced  
Extended Masters 15 months/  
Part-time 20 months
- **Start date**  
February/September
- **Location**  
West London Campus

### Entry requirements



Please see page 139

We will also consider equivalent professional qualifications or a relevant HND provided you can demonstrate relevant work experience. In this case you will have to complete an interview with your application and some optional modules may not be available without a first degree in computing.



Get in touch:

 0800 036 8888

 [courses@uwl.ac.uk](mailto:courses@uwl.ac.uk)



## MSc Health Psychology

With the Covid-19 pandemic serving as a stark reminder that the choices we make about our health do matter, there is no better time to immerse yourself in this course.

### What you will study

This MSc Health Psychology course will give you a complete grounding in the theory, themes, professional issues and practical skills central to Stage 1 Health Psychology training.

It is the first step towards Chartered Psychologist status, as well as registration with the Health and Care Professions Council (HCPC) as a Health Psychologist.

The course covers the core BPS (British Psychological Society) material, including:

- contexts and perspectives in health psychology
- chronic disorders and health interventions
- clinical psychology training
- individual differences in the context of health and illness
- biopsychosocial issues in health psychology
- health inequalities
- ethical, legal and professional practice issues
- research methods.

### Where your career will take you

Graduates have gone on to complete Stage 2 Health Psychology training, as well as working as stop-smoking advisers, psychological wellbeing practitioners and university lecturers.

- **Award**  
Masters
- **Duration**  
Full-time 1 year/  
Part-time 2 years
- **Start date**  
September
- **Location**  
West London Campus

### Entry requirements



Please see page 139

You must hold, or be eligible for, the Graduate Basis for Chartered membership (GBC) of the British Psychological Society (BPS) with an upper second or first class award. You may also be advised to apply for GBC if you:

- can demonstrate evidence of practical experience relevant to health psychology
- have attained an additional qualification relevant to health psychology
- can show evidence during your undergraduate degree of particular strengths in health psychology.



Get in touch:

 **0800 036 8888**

 **courses@uwl.ac.uk**





## MA Human Resource Management

Our MA Human Resource Management course supports students to develop innovative ways of examining the work and role HR Professionals play in organisations to meet the needs of employers.

### What you will study

This course typically focuses on people management, and it offers students the advanced skills and knowledge for a successful career in people management nationally and internationally.

The teaching methods and assessments are aimed at the application of knowledge within the workplace. You will play an active role in learning by engaging with case studies, simulations, live industry examples and scenarios that call for critical evaluative analysis and enquiry. Peer/flip learning and action learning sets are also integrated as part of the teaching methods. You will also carry out a consultancy project for a real organisation with a particular HRM challenge that needs a remedy to successfully complete the course.

### Where your career will take you

This masters in Human Resource Management is designed to meet the career development needs of Human Resource (HR) managers, advisers, administrators and experienced line managers who want to transition to become human resource practitioners.

- **Award**  
Masters
- **Duration**  
Full-time 12 months/  
Part-time 2 years/  
Full-time Extended Masters  
15 months/  
Enhanced Extended Masters  
18 months
- **Start date**  
February/September
- **Location**  
West London Campus

### Entry requirements



Please see page 139

- CIPD level 5 qualifications – with relevant HR or management experience
- if without a degree – a minimum of 5 years HR or management experience.

Graduates without any HR or managerial experience and non-graduates with the above-specified experience will be assessed through a written piece of work and an interview at which they will be assessed on their ability to do the course.



Get in touch:

 **0800 036 8888**

 **courses@uwl.ac.uk**

## PgDip Human Resource Management

This well-established course will expose students to wide-ranging contemporary perspectives on key developments in people management and organisational analysis.

### What you will study

On this postgraduate diploma course, you will be encouraged to take a critical perspective on current theory and practice in human resource management, analyse complex problems and devise creative solutions to them. You will:

- explore the broader academic context of human resources
- look at issues such as organisational strategies and the internal and external environmental influences on strategy development
- examine the key principles underpinning UK and EU employment law
- develop your people-management skills through exploring various approaches to recruitment management and leadership taken by different organisations
- be encouraged to develop personal skills including the ability to be self-aware and reflect on your strengths and weaknesses, leadership and decision-making abilities
- have the opportunity to improve professional skills including IT and finance.

### Where your career will take you

You could work as a consultant, human resources manager, human resources business partner/operations manager and more.

- **Award**  
Postgraduate Diploma
- **Duration**  
Part-time 18 months
- **Start date**  
February/September
- **Location**  
West London Campus

### Entry requirements



Please see page 139

- CIPD level 5 qualifications – with a minimum of 2 years HR or management experience
- if without a degree – a minimum of 5 years HR or management experience.



Get in touch:

 **0800 036 8888**

 **courses@uwl.ac.uk**

## MSc Improvement Science

Our MSc in Improvement Science is a work-based learning course designed for experienced healthcare staff, both in the UK and internationally.

### What you will study

By developing your knowledge of the latest methodologies in healthcare, our course will provide you with a high level of pragmatic research capability and knowledge applicable to your workplace so you can help to make a positive impact.

The course champions evidence-based implementation and evidence-based practice. It focuses on understanding care from the perspective of patients and carers and engaging them in its future design and development. Bringing research more rapidly into everyday practice, different improvement methodologies and rigorous evaluation of clinical and cost-effectiveness will also be covered.

Many NHS Trusts now have improvement in their values and strategic agendas, this course will provide you with a robust understanding of how you can support your Trust and patients to improve care.

### Where your career will take you

Upon graduation, you will have the right skillset to deliver improvements in complex healthcare contexts, including in areas under financial constraints.

Having completed a work-based learning project within the degree, you will have first-hand knowledge of how to improve patient care in line with organisational priorities.

- **Award**  
Masters
- **Duration**  
Work-based learning 4 years
- **Start date**  
September
- **Location**  
West London Campus

### Entry requirements



Please see page 139

- be based in a healthcare setting
- be recognised as a competent and capable carer by the organisation you work for.

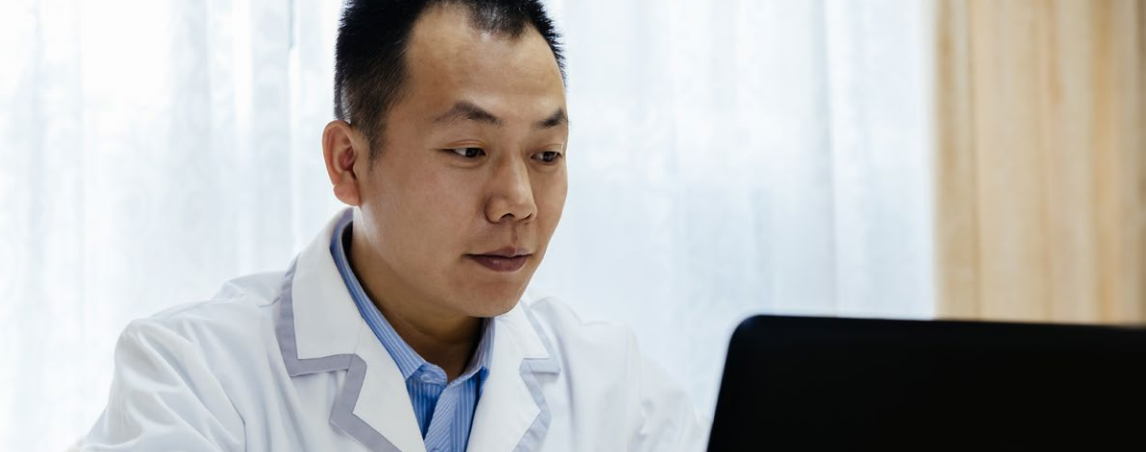
You should also have an idea of how to improve your healthcare service/setting. If you are unsure whether you meet the entry requirements please contact the course leader who will be able to assist you.



Get in touch:

 **0800 036 8888**

 **courses@uwl.ac.uk**



## MSc Infection Prevention and Control

This course will help you develop specialist knowledge and become an expert practitioner in the field of infection prevention and control.

### What you will study

This course will provide you with the relevant knowledge and skills required to be an IPCP (Infection Prevention and Control Practitioner), which enables you to translate and apply these core principles across different acute and secondary healthcare settings. These are senior and specialist roles that require a high level of cross-disciplinary knowledge in all aspects of the epidemiology, management and prevention of infection, as well as sophisticated communication skills. Initiating and facilitating service improvements to assure patient safety are a key part of the role.

### Where your career will take you

Career options may include senior roles within the field of infection prevention and control or public health. You could also study for a PhD or Professional Doctorate.

- **Award**  
Masters
- **Duration**  
Part-time 3-4 years
- **Start date**  
September
- **Location**  
West London Campus

### Entry requirements



Please see page 139

- already be working as an Infection Prevention and Control Practitioner (the latter must be at least 50% of your role).

If you do not have a first degree there may be an alternative route to access the course. Please contact the Course Leader (Neil Wigglesworth) to discuss options.



Get in touch:

 **0800 036 8888**

 **courses@uwl.ac.uk**



## MSc Information Systems

This course aims to give you a full understanding of how information systems (IS) are designed, constructed and integrated within organisations.

### What you will study

This MSc Information Systems will build on the knowledge and skills taught on traditional undergraduate computing courses. Expanding on this foundation, you will learn about the challenges and solutions for introducing IS into enterprises and organisations.

The success of any IS/IT strategy is largely dependent on specialists who recognise diverse business needs and understand how technology can support an organisation to achieve its goals. Your studies will cover system architecture and supporting technologies as well as the effective management and delivery of content and data.

Throughout the course, you will have access to laboratories and dedicated information and communications technology (ICT) suites, as well as specialist networks and software, the University library and digital resources.

### Where your career will take you

There is demand among employers for skilled IS and ICT professionals on both the development and service sides. Our graduates have been successful in finding employment in the private, public and voluntary sectors.

- **Award**  
Masters
- **Duration**  
Full-time 1 year/  
Full-time with internship  
20 months/  
Extended Masters and Enhanced  
Extended Masters 15 months/  
Part-time 20 months
- **Start date**  
September
- **Location**  
West London Campus

### Entry requirements



Please see page 139

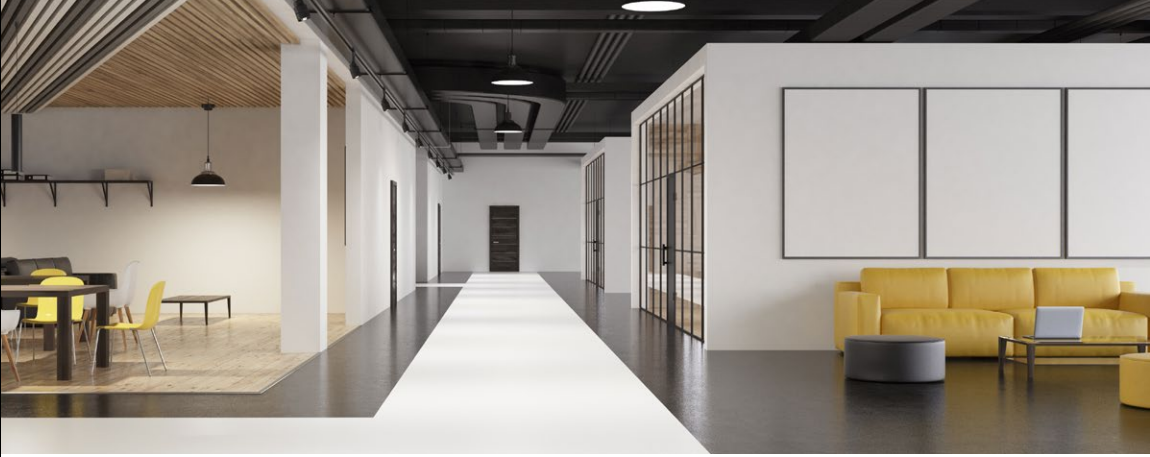
We will also consider equivalent professional qualifications or a relevant HND provided you can demonstrate relevant work experience. In this case you will have to complete an interview with your application and some optional modules may not be available without a first degree in computing. All applications are considered individually.



Get in touch:

 **0800 036 8888**

 **courses@uwl.ac.uk**



## MA Interior Environment Design

Are you passionate about interior design? This course will give you the creative and professional skills you need to join the design professionals of the future.

### What you will study

Our MA Interior Environment Design course will encourage you to consider how commercial, social and political factors are influencing form and function to create new prototypes for hybrid interiors and reworking existing spaces with new ideas.

This course will investigate how these factors work together to create temporary and permanent environments in both constructed and virtual spaces.

The course is taught through a mixture of collaborative project work alongside traditional research. It includes problem-based practical workshops and the development of live-consultancy projects with industry partners.

### Where your career will take you

Upon graduation, you could go on to work across a range of specialist-designed environments, working with architects, engineers and designers, either within the traditional structure of a practice or as a freelance consultant.

- Award  
Masters
- Duration  
Full-time 14 months
- Start date  
September
- Location  
West London Campus


### Entry requirements



Please see page 139



Get in touch:

 **0800 036 8888**

 **courses@uwl.ac.uk**

## LLM International Banking and Finance Law

Would you like to work as a legal expert in the finance sector? This course will give you the skills you need.

### What you will study

Your studies will cover both legal and financial areas of expertise, giving you a well-rounded qualification. Your tutors and lecturers have significant practical experience and excellent connections within the industry.

You will cover topics including syndicated loans, bond issuances, derivatives markets and employment law. We will also compare jurisdictions outside of English courts, in the US, Africa, Asia and the Middle East. The course also covers securities regulations, international banking law, international commercial arbitration and mediation law.

Furthermore, you will have access to an on-site courtroom with laptops and video equipment for judges/advocates, which is ideal for student mooting competitions. Our Student Law Society is highly active and will provide valuable networking opportunities, in addition to social events.

### Where your career will take you

Graduates will be able to seek employment opportunities with firms specialising in investment, law, consultancy and accounting.

- **Award**  
Masters
- **Duration**  
Full-time 1 year/  
Part-time 2 years
- **Start date**  
September
- **Location**  
West London Campus

### Entry requirements



Please see page 139

If you have at least three years of legal or relevant commercial work experience then you will also be considered, subject to an interview. All applications are considered individually.



Get in touch:

 0800 036 8888

 [courses@uwl.ac.uk](mailto:courses@uwl.ac.uk)



## LLM International Business and Commercial Law

This International Business and Commercial Law course will introduce you to the theory and practice of international business regulation in a globalised world.

### What you will study

Your studies will cover both legal and financial aspects, giving you a well-rounded qualification which will enhance your ability to work as a legal expert in multinational corporations.

The course will focus on international business law from a global perspective. It will identify the important characteristics of doing business in an international environment, the main sources of regulation and key concepts of contract and corporate law.

You will explore business dispute resolution and be introduced to the concepts of corporate social responsibility, in particular doing business in developing countries. The course will also touch on other common law and civil law jurisdictions and give you a critical comparative law approach to international commercial law.

### Where your career will take you

Many graduates go on to successful careers with global corporations, multinational law firms and international consultants.

- **Award**  
Masters
- **Duration**  
Full-time 1 year/  
Part-time 2 years
- **Start date**  
September
- **Location**  
West London Campus

### Entry requirements



Please see page 139

If you have at least three years of legal or relevant commercial work experience then you will also be considered, subject to an interview. All applications are considered individually.



Get in touch:

 **0800 036 8888**

 **courses@uwl.ac.uk**





## MSc International Business Management

Whether you want to kick-start a brand new career, boost your existing experience or change career direction, this course will provide you with the skills to flourish.

### What you will study

The International Business Management course provides you with an understanding and critical awareness of the complexity and interdependence that characterises the national and international institutional, political, and economic environment within which international businesses operate.

Furthermore, it will provide you with an understanding of key issues in leadership in a cross-cultural environment.

The content of the course focuses on international business decisions and the underlying forces driving the process of internationalisation.

### Where your career will take you

We have strong links with national and international employers and our graduates find employment in multiple sectors, often in senior positions.

Recent graduates have gone on to work in roles such as operations manager, marketing manager and sales manager.

- **Award**  
Masters
- **Duration**  
Full-time 1 year/  
Extended Masters and Enhanced  
Extended Masters 15 months
- **Start date**  
February/September
- **Location**  
West London Campus

### Entry requirements



Please see page 139



Get in touch:

 **0800 036 8888**

 **courses@uwl.ac.uk**



## MA International Fashion Brand Management (three pathways)

If you are passionate about fashion but do not want to follow the design route then this course, offering three different pathways, is perfect for you.

### What you will study

Our MA International Fashion Brand Management course offers three different pathways: 1) Fashion Buying and Merchandising, 2) Fashion Visual Merchandising, 3) Fashion PR and Communication.

Strategic fashion brand management at its core offers a combination of fashion buying, merchandising, supply chain, retail space, PR, consumer behaviour, data insights, fashion business strategies and disruptive innovation in today's fast changing retail landscape, providing the high-level professional skills and knowledge needed to succeed.

The course offers an optional study trip to one of the key fashion cities. Costing approximately £450, which is not included in the tuition fees, this trip is dependent on student numbers and economic factors at the time. The option of undertaking a placement or engaging in an industry project is offered in semester 3.

### Where your career will take you

Upon graduation, you could go on to work in a number of different roles, depending on which pathway you take. Examples of roles include fashion buyer, fashion merchandiser, retail manager, fashion marketing and PR manager, fashion events manager, fashion journalist, catwalk designer or fashion set-designer.

- **Award**  
Masters
- **Duration**  
Full-time 14 months
- **Start date**  
September
- **Location**  
West London Campus


### Entry requirements



Please see page 139



Get in touch:

 **0800 036 8888**

 **courses@uwl.ac.uk**

## LLM International Studies in Intellectual Property Law

Build specialist knowledge of intellectual property law, including copyright, trademark and patent law, and legal questions associated with new technologies.

### What you will study

If you are a law graduate, practising lawyer or business professional, then this course has been designed to equip you with the expertise in IP law and technology that international organisations and law firms now look for.

You will study the most important components of international intellectual property law, such as copyright, patents and trademarks, and how these forms of intellectual property are protected in the digital age. You will look at the European and international aspects of patent law, as well as legal questions associated with new technologies, multimedia and cyberspace.

In addition to these specialised topics, you will examine international commercial law and related subjects. This will help to put IP into the context of modern international business relations.

### Where your career will take you

Many graduates go on to successful careers with international law firms, multinational corporations, regulatory bodies and international organisations.

- **Award**  
Masters
- **Duration**  
Full-time 1 year/  
Part-time 2 years
- **Start date**  
September
- **Location**  
West London Campus

### Entry requirements



Please see page 139

If you have at least three years of legal or relevant commercial work experience then you will also be considered, subject to an interview. All applications are considered individually.



Get in touch:

 **0800 036 8888**

 **courses@uwl.ac.uk**



## MA International Tourism and Aviation Management (Internship option available)

This degree will equip you with the critical understanding and advanced research skills you need to work towards a managerial career in the tourism or aviation industries.

### What you will study

This aviation and tourism management course aims to equip you with the academic and industry-specific skills that will help you find suitable employment within a service-based industry.

You will adopt an interdisciplinary approach to the study of tourism and aviation management. By drawing upon international case study material, you will improve your understanding of the global operations of both the tourism and aviation sectors.

Our blended teaching and learning strategy makes use of lectures, tutorials, seminars, industry-based briefs and self-managed personal research. Online learning support materials will be central to your studies.

### Where your career will take you

Upon graduation, you could go on to work in a variety of sectors anywhere in the world, including airside, portside, within tour operations, attractions management or business travel.

- **Award**  
Masters
- **Duration**  
Full-time 1 year/  
Full-time with internship  
18 months/  
Extended Masters and Enhanced  
Extended Masters 15 months/  
Part-time 2 years
- **Start date**  
September
- **Location**  
West London Campus

### Entry requirements



Please see page 139



Get in touch:

 **0800 036 8888**

 **courses@uwl.ac.uk**

## LLM Legal Practice (LPC)

Are you interested in a career as a solicitor? This course incorporates the Legal Practice Course (LPC), the first stage of a solicitor's professional training.

### What you will study

This course will provide you with training and support in order to become an effective trainee solicitor, as well as offering opportunities to apply for legal work experience.

The course starts with a foundation week where workshops will introduce you to the course, as well as to the skills of interviewing and advising, legal writing and drafting, professional conduct and taxation.

Following this, study for stage one of the course runs from September until February, and then study for stage two from March to June, including a Research Methodology module and a 15,000 word dissertation on an area related to legal practice. Upon completion you will have covered all the compulsory professional elements necessary to qualify as a solicitor.

### Where your career will take you

Successful completion can lead to employment in a wide range of legal positions, from private practice to areas such as local government, the Crown Prosecution Service or the Government Legal Service, charities and in-house companies.

- **Award**  
Masters
- **Duration**  
Full-time 1 year
- **Start date**  
September
- **Location**  
West London Campus

### Entry requirements



Please see page 139

#### Solicitors Regulation Authority (SRA) – Transitional Arrangements

Please note the Legal Practice course is only available to students who are eligible to qualify as a Solicitor through the **Solicitors Regulation Authority (SRA) transitional arrangements**, which cover candidates already on their way to becoming a solicitor before the Solicitors Qualifying Examination (SQE) was introduced in September 2021.

Find out more about your eligibility under the **SRA transitional arrangements**:

<https://www.sra.org.uk/become-solicitor/legal-practice-course-route/transitional-arrangements>

Please visit our website for full entry requirements.



Get in touch:

 **0800 036 8888**

 **courses@uwl.ac.uk**



## PgDip Legal Practice Course (LPC)

Are you interested in a career as a solicitor? This course provides the first stage of the professional training you will need.

### What you will study

During the course, you will receive training and support to become an effective trainee solicitor. In addition, there are opportunities to apply for legal work experience.

You will start the course with a foundation week early in September. You will be introduced in workshops to the course and the skills of interviewing and advising, legal writing and drafting, professional conduct and taxation.

Following this foundation week, you will start your study for stage one of the course from September until February. From March to June you will study stage two. On successful completion of stages one and two, you will have covered all the compulsory professional elements necessary to qualify as a solicitor and will be awarded the Postgraduate Diploma in Legal Practice.

### Where your career will take you

On graduating, you will be qualified to work as a trainee solicitor.

- **Award**  
Postgraduate Diploma
- **Duration**  
Full-time 1 year
- **Start date**  
September
- **Location**  
West London Campus

### Entry requirements



Please see page 139

#### Solicitors Regulation Authority (SRA) – Transitional Arrangements

Please note the Legal Practice course is only available to students who are eligible to qualify as a Solicitor through the **Solicitors Regulation Authority (SRA) transitional arrangements**, which cover candidates already on their way to becoming a solicitor before the Solicitors Qualifying Examination (SQE) was introduced in September 2021.

Find out more about your eligibility under the **SRA transitional arrangements**:

<https://www.sra.org.uk/become-solicitor/legal-practice-course-route/transitional-arrangements>

Please visit our website for full entry requirements.



Get in touch:

 **0800 036 8888**

 **courses@uwl.ac.uk**



## LLM Legal Practice (Top-up)

This course will enable you to enhance your qualifications, complementing the compulsory vocational stage of learning required to embark on a law career.

### What you will study

This course provides practice-relevant study on aspects of substantive law and legal practice and emphasises developing the research and analytical skills you need to create a piece of self-managed research relevant to law practice. Our research and methodology module is more detailed and provides more teaching hours than similar courses from other providers, and it provides a much needed bridge between most LLM and MPhil/PhD research methods.

Taking place over one semester, the Research Methodology module is delivered through a blend of taught and online lectures, practical case studies and seminars. Assessment is via a 2,000-word research proposal.

The dissertation is an original piece of research into research practice. Although your research must be self-managed, you will be assigned a dissertation supervisor with similar research interests, either from university staff or from within the legal profession.

### Where your career will take you

Potential employers include private practice, the Crown Prosecution Service, the Government Legal Service, charities and in-house solicitors.

- **Award**  
Masters
- **Duration**  
Part-time 1 year
- **Start date**  
September
- **Location**  
West London Campus

### Entry requirements



Please see page 139

#### Solicitors Regulation Authority (SRA) – Transitional Arrangements

Please note the Legal Practice course is only available to students who are eligible to qualify as a Solicitor through the **Solicitors Regulation Authority (SRA) transitional arrangements**, which cover candidates already on their way to becoming a solicitor before the Solicitors Qualifying Examination (SQE) was introduced in September 2021.

Find out more about your eligibility under the **SRA transitional arrangements**:

<https://www.sra.org.uk/become-solicitor/legal-practice-course-route/transitional-arrangements>

Please visit our website for full entry requirements.



Get in touch:

 **0800 036 8888**

 **courses@uwl.ac.uk**



## MA Luxury Hospitality Management

(Internship option available)

This masters in hospitality management can help to launch your career in a highly lucrative and competitive market.

### What you will study

This course combines a dedicated academic focus with a study of contemporary managerial and strategic issues. You will learn about the business environment in which luxury brands operate, the customer experience and reputation management in the digital world of luxury hospitality management.

You will focus on the subtleties that separate businesses and services in the luxury hospitality sector today, allowing you to develop a critical understanding of the operational, financial and cultural imperatives of luxury hospitality and the impact of changes in that environment at national and international levels.

You will address the opportunities and challenges involved in designing the customer experience within the luxury hospitality industry, focusing on the strategies that will help your future employer to achieve their goals.

### Where your career will take you

Upon graduation, you could go on to work as a brand, marketing or hotel manager, luxury travel adviser, corporate communications consultant, advertising account director or PR consultant.

- **Award**  
Masters
- **Duration**  
Full-time 1 year/  
Full-time with internship 18 months/  
Extended Masters and Enhanced Extended Masters 15 months/  
Part-time 2 years
- **Start date**  
February/September
- **Location**  
West London Campus

### Entry requirements



Please see page 139



Get in touch:

 **0800 036 8888**

 **courses@uwl.ac.uk**





## MPH Master of Public Health

This course enhances your employability by helping you to develop public health leadership capability to become a creative practitioner able to apply entrepreneurial skills to improve health services quality and population health.

### What you will study

This course focuses on key public health disciplines from healthy public policy, epidemiology and biostatistics public health research methodologies to global public health challenges.

It is designed to develop your skills in evidence retrieval, critical analysis and synthesis, leadership, ability to read and absorb information from a wide range of sources and creativity to tackle public health challenges at global and local levels.

The course content has been developed with professional relevance in mind, and you will learn from highly skilled staff, many of whom conduct advanced research in their specialist areas.

### Where your career will take you

Public health knowledge and skills are in demand from a wide range of employers in the UK and internationally. This includes local government, national and international policy makers, the NHS and other healthcare providers, health charities and health non-government organisations (NGOs).

- **Award**  
MPH
- **Duration**  
Full-time 1 year/  
Part-time 2 years
- **Start date**  
April/September
- **Location**  
West London Campus

### Entry requirements



Please see page 139

- a supporting statement.



Get in touch:

 **0800 036 8888**

 **courses@uwl.ac.uk**



## MSc Maritime Business Management

Our MSc Maritime Business Management can provide you with the knowledge, skills and confidence to flourish in the dynamic shipping industry.

### What you will study

The MSc Maritime Business Management is designed for graduates and professionals seeking an in-depth education and aiming to expand their knowledge and skills in the dynamic shipping industry.

The course is delivered in the Hellenic Institute of Maritime Studies (HIMS). HIMS's close proximity to the international traditional maritime centre of London means it is ideally placed to deliver the precise combination of business and maritime experience that is sought after by employers.

Our strong industry links with organisations such as IMO, BIMCO, ICS, International Chamber of Shipping, The Baltic Exchange, The International Underwriting Association, The Nautical Institute, UK Chamber of Shipping, Greek Shipping Co-operation Committee, and more, mean our graduates are well equipped to enter a variety of managerial roles and build a rewarding career.

### Where your career will take you

The maritime management course will help you pursue a career in fields such as: international trade and commerce, logistics, maritime insurance, shipping economics, port and dockyard management, shipping laws. Recent maritime business management graduates have gone on to work in roles such as: port manager, merchant officer, shipping manager and yard manager.

- **Award**  
Masters
- **Duration**  
Full-time 1 year
- **Start date**  
September
- **Location**  
West London Campus

### Entry requirements



Please see page 139

You can also apply if you have the following:

- Merchant Marine Academy graduates or holders of equivalent qualifications can be admitted
- the highest-grade certificate of competency (CoC) for unrestricted service as a master mariner or chief engineer, or equivalent maritime qualifications.



Get in touch:

 **0800 036 8888**

 **courses@uwl.ac.uk**

DELIVERED BY



**HELLENIC INSTITUTE OF  
MARITIME STUDIES**

SUPPORTED BY

**BUSINESS  
COLLEGE  
OF  
ATHENS**



# MSc Maritime Cyber Security

The MSc in Maritime Cyber Security is the ideal postgraduate degree for a cyber security career in the shipping industry.

## What you will study

You will gain in-depth knowledge and practical understanding of issues surrounding the design, analysis and implementation of modern secure IT systems in the maritime sector.

The course balances advanced academic theories and research with practical knowledge, and its structure is suitable for shipping graduates who aim to expand their knowledge and skills, and for graduates without a shipping background who seek a demanding conversion course.

The course develops an appreciation of commercial and/or open-source cyber security equipment, software and services based on maritime industry-standard technologies.

Additionally, the course is delivered in the Hellenic Institute of Maritime Studies (HIMS), and HIMS is linked to BCA College, the oldest Maritime Business School in Greece and Europe.

## Where your career will take you

The Maritime Cyber Security course will prepare you for a range of jobs and careers. Roles open to MSc Maritime Cyber Security graduates could include: Information Security Manager, Information Security Auditor, Security Principal or Architect, Security Senior Engineer or Data Privacy Expert.

- **Award**  
Masters
- **Duration**  
Full-time 1 year
- **Start date**  
September
- **Location**  
West London Campus

## Entry requirements



Please see page 139

You can also apply if you have the following:

- Merchant Marine Academy graduates or holders of equivalent qualifications can be admitted
- the highest-grade certificate of competency (CoC) for unrestricted service as a master mariner or chief engineer, or equivalent maritime qualifications.



Get in touch:

 **0800 036 8888**

 **courses@uwl.ac.uk**





## MSc Marine Engineering Management

The Marine Engineering Management MSc is the ideal postgraduate degree for achieving or developing high-calibre careers in the shipping industry.

### What you will study

This postgraduate degree is designed for graduates and professionals who seek an in-depth education and knowledge development in the traditional yet developing marine engineering and maritime sectors.

You will study the theoretical concepts of marine engineering, along with case studies and practical subjects. The modules cover a range of key marine engineering management areas and functions, from procurement management to the decarbonisation of shipping.

There is a particular focus on decision-making for graduates without an engineering background who seek a demanding conversion course.

Additionally, the course is delivered in the Hellenic Institute of Maritime Studies (HIMS), and HIMS is linked to BCA College, the oldest Maritime Business School in Greece and Europe.

### Where your career will take you

We have strong links with national and international employers and our graduates find employment in multiple sectors, often in senior positions. Graduates will gain the global mindset needed to succeed within the maritime industry. Roles open to graduates could include: superintendent engineer, performance engineer, technology officer, project engineer, quality officer or technical management executive.

- **Award**  
Masters
- **Duration**  
Full-time 1 year
- **Start date**  
September
- **Location**  
West London Campus

### Entry requirements



Please see page 139

You can also apply if you have the following:

- Merchant Marine Academy graduates or holders of equivalent qualifications can be admitted
- the highest-grade certificate of competency (CoC) for unrestricted service as a master mariner or chief engineer, or equivalent maritime qualifications.



Get in touch:

 **0800 036 8888**

 **courses@uwl.ac.uk**

DELIVERED BY



**HELLENIC INSTITUTE OF MARITIME STUDIES**

SUPPORTED BY

**BUSINESS COLLEGE OF ATHENS**





## MBA Masters in Business Administration

This MBA degree course has been designed to support your career progression, preparing you to carry out managerial roles successfully or to build your own business.

### What you will study

In a vibrant and supportive environment, you will develop professionally by combining your intellectual, analytical, strategic and critical thinking skills with your drive and ambition. This will help you to begin or progress in your chosen business career, or to change career direction.

You will improve your effectiveness as a manager and leader, transforming your prospects for managerial careers as well as developing your entrepreneurial skills. This industry-focused course has been designed with direct input from employers, large and small, from both public and private sectors.

The MBA course is accredited with Chartered Management Institute (CMI). After successfully completing the MBA course, in addition to the MBA degree, you will also attain the CMI Level 7 Diploma in Strategic Management and Leadership qualification.

### Where your career will take you

Once you graduate, you could decide to set up your own business, progress to senior management, or start over in a fresh sector that interests you.

- **Award**  
Masters
- **Duration**  
Full-time 1 year/  
Extended Masters and Enhanced  
Extended Masters 15 months
- **Start date**  
February/September
- **Location**  
West London Campus

### Entry requirements



Please see page 139



Get in touch:

 **0800 036 8888**

 **courses@uwl.ac.uk**



## MSc Mathematics and Statistics

This course provides a unique opportunity for you to develop specialist skills to launch a career in a rapidly evolving job market where there is a high demand of data and numeracy experts.

### What you will study

You will gain strong skills in topics such as machine learning, mathematical and stochastic modelling and symmetry techniques. Taught by expert academics in their respective fields, you will develop exceptional analytical and computational skills. In your final semester, you will also be able to undertake a research project under the supervision of our research specialists.

Skills gained from this degree include:

- collecting, analysing and presenting data to support a case
- the understanding and mastering of popular machine learning techniques
- the ability to apply symmetry considerations to find explicit solutions to non-linear problems
- the ability to perform mathematical and statistical modelling to address complex problems
- scientific communication
- interdisciplinarity from collaborating with computer scientists and engineers.

### Where your career will take you

Career roles the course may lead to include data scientist, operational analyst, chartered mathematician, chartered statistician and research scientist.

- **Award**  
Masters
- **Duration**  
Full-time 1 year
- **Start date**  
September
- **Location**  
West London Campus

### Entry requirements



Please see page 139



Get in touch:

 **0800 036 8888**

 **courses@uwl.ac.uk**



## MMidwifery (2 years shortened)

This course is for graduate adult nurses who are currently registered with the NMC and would like to gain registration as a midwife.

### What you will study

This course has been developed with input from students, service users and our NHS partners to provide you with the academic and professional qualifications you need to be eligible to apply to register with the NMC as a midwife.

Throughout the course, there is a strong emphasis on the physiological process of childbirth and you will gain a sound understanding of the role of the midwife and the foundations of midwifery care. As you progress, you will develop and apply your knowledge to a variety of contexts.

The NMC requires you to complete a minimum of 1500 hours of practice experience over 2 years to be eligible to register as a midwife. At UWL, students have 22 planned practice placement weeks each year to meet this requirement; you will be fully supported whilst on placement.

### Where your career will take you

On successful completion of the course you will be eligible to apply to register with the Nursing and Midwifery Council (NMC). Most graduates go on to work with the NHS Trust where they undertook their placement. As a qualified midwife, you could work within the community, in a hospital, as part of a case loading team or in the private sector.

- **Award**  
MMidwifery
- **Duration**  
2 years
- **Start date**  
April
- **Location**  
West London Campus/  
Berkshire Institute for Health

### Entry requirements



Please see page 139

- current registration as an Adult Nurse on the NMC professional register
- GCSE Mathematics and English Grade 9 – 4 (A\* – C) OR equivalent eg Functional Skills Mathematics and English Level 2
- experience working as an adult nurse
- a satisfactory reference.



Get in touch:

 **0800 036 8888**

 **courses@uwl.ac.uk**





## MMidwifery (3 years pre-registration)

This course will enable you, as the next generation of midwives, to develop the knowledge, skills and values to deliver world-class, evidence-based care for women, babies and their families.

### What you will study

This course will provide you with the skills to become a midwife who can practise in a variety of settings and provide safe and effective care across the maternity continuum. You will learn through a combination of classroom, online and simulation-based activities, and hands-on experience in clinical placements in a variety of NHS Trust maternity units.

Throughout the course, there is a strong emphasis on childbirth as a normal physiological process and you will gain a sound understanding of the role of the midwife and the foundations of midwifery care.

At the end of the course, you will be awarded a Masters in Midwifery and will be eligible to apply to register with the Nursing and Midwifery Council as a Midwife.

### Where your career will take you

On successful completion of the course you will be eligible to apply to register with the Nursing and Midwifery Council (NMC). Most of our graduates go on to work with the NHS Trust where they undertook their placement. As a qualified midwife, you could work within the community, in a hospital, as part of a case loading team or in the private sector.

- **Award**  
MMidwifery
- **Duration**  
3 years
- **Start date**  
April/September
- **Location**  
West London Campus/  
Berkshire Institute for Health

### Entry requirements



Please see page 139

- 5 GCSEs including Mathematics, English and a Science at Grade 9-4 (A\*-C) OR equivalent eg Functional Skills Mathematics and English Level 2
- a satisfactory reference.

Candidates with a Level-3 Science-based Access to Higher Education Diploma require Mathematics and English GCSE Grade 9-4 (A\*-C) OR equivalent eg. Functional Skills Mathematics and English Level 2.



Get in touch:

 **0800 036 8888**

 **courses@uwl.ac.uk**







## MA Music and Performing Arts Education

This course aims to develop your performance teaching, leadership and research skills across a variety of global music and performing arts educational contexts.

### What you will study

This course will help you develop vital skills to hone your professional education-based career, complementing your existing performance abilities through modules focused on workshop techniques, enterprise, fund-raising, marketing, technology, pedagogic theory and collaboration.

Throughout the degree, there are opportunities to collaborate and work with students from across LCM's vast creative community, enhancing your learning experience and developing your network of like-minded industry professionals.

### Where your career will take you

Graduates will be prepared for leadership careers in areas including youth or community music/theatre groups and schools, instrumental/vocal/acting/movement performance teaching and institution-based arts education and outreach ventures.

- Award  
Masters
- Duration  
Full-time 1 year/  
Part-time 2 years
- Start date  
September
- Location  
West London Campus

### Entry requirements



Please see page 139



Get in touch:

 0800 036 8888

 [courses@uwl.ac.uk](mailto:courses@uwl.ac.uk)



## MA Music Industry Management and Artist Development

One of the most successful masters courses in the UK for launching careers in the music business.

### What you will study

You will study key concepts in managing and developing business within the music industry. You will also learn a range of specialist skills including artist management, record label marketing, live event management and copyright law.

Whilst developing the skills and knowledge to succeed in the global industry, you will learn from practising industry professionals as well as some of the world's leading music business academics.

This programme is dual accredited by the Chartered Management Institute (CMI). Students who successfully complete and pass all mapped modules will be eligible for an AA Level 7 Award in Strategic Management and Leadership.

### Where your career will take you

Recent graduates work in areas such as artist management, agency and promotion, A&R, music publishing, tour management, PR or creation of a new business.

- Award  
Masters
- Duration  
Full-time 1 year/  
Part-time 2 years
- Start date  
February/September
- Location  
West London Campus

### Entry requirements



Please see page 139

- UG honours degree in business or music related field



Get in touch:

 **0800 036 8888**

 **courses@uwl.ac.uk**



## PgDip Nursing (Adult)

Are you ready to make a difference and embark on a rewarding career in nursing? This course has been designed for graduates who would like to become an Adult Nurse.

### What you will study

This course will enable you to develop the knowledge and skills to deliver world-class person-centred, evidence-based care. You'll learn how to empower people to make a difference to their own physical and mental health. You will spend time learning in both theory and practice (includes in-hospital and out of hospital).

Our simulation centres, incorporating virtual reality and immersive technologies, will help you practice your clinical skills in a safe environment.

### Where your career will take you

On successful completion of the course you will be eligible to apply to register with the NMC, as an adult nurse.

Many of our graduates find work with local NHS Trusts or healthcare organisations.

Alternatively, you could continue your studies at UWL. This will help you to enhance your clinical knowledge and skills in a specialist area.

- **Award**  
Postgraduate Diploma
- **Duration**  
Full-time 2 years
- **Start date**  
April/September
- **Location**  
West London Campus/  
Berkshire Institute for Health

### Entry requirements



Please see page 139

- GCSE English and Maths (grade 9 – 4/ A\* – C) or Level 2 equivalents.

All offers are subject to satisfactory enhanced Disclosure and Barring Service (DBS), occupational health checks and a satisfactory reference

Shortlisted candidates will attend an individual values based interview. Candidates successful at the interview will be required to complete a 6,000 word portfolio (RPL module), pass mark of 40%, at academic level 6 to be offered a place on this course. Guidance will be provided



Get in touch:

 0800 036 8888

 [courses@uwl.ac.uk](mailto:courses@uwl.ac.uk)

**nmc**  
Nursing &  
Midwifery  
Council

**hpc** health & care  
professionals  
council



## MSc Nursing (Adult) Blended Learning – Pre-registration

This blended learning course has been designed for self-motivated applicants with an undergraduate degree and healthcare experience, who are looking for a two-year flexible route to become an adult nurse.

### What you will study

This course combines the convenience and flexibility of online learning for the theoretical component of the course, with on-campus practical experience in our state-of-the-art simulation centres and a wide range of placements in NHS Trust and private, voluntary and independent healthcare organisations.

You will learn to care for adults of all ages (18+) who are recovering from an accident or acute illness, learning to live with a chronic health condition or at the end of their lives.

### Where your career will take you

On successful completion of the course you will be eligible to apply to register as an Adult Nurse with the Nursing and Midwifery Council (NMC). Many graduates find work with local NHS Trusts or healthcare organisations.

- **Award**  
Masters
- **Duration**  
Blended learning 2 years
- **Start date**  
September
- **Location**  
West London Campus/  
Berkshire Institute for Health

### Entry requirements



Please see page 139

- GCSE English and Maths (grade 9 – 4/ A\* – C) or Level 2 equivalents
- Recognition of Prior Learning (RPL) – 1,000 hours (500hrs theory and 500hrs practice); approximately 4 months formal healthcare experience signed off by a registrant.

All offers are subject to values-based interview, satisfactory enhanced Disclosure and Barring Service (DBS), occupational health checks and a satisfactory reference.



Get in touch:

 **0800 036 8888**

 **courses@uwl.ac.uk**

**nmc**  
Nursing &  
Midwifery  
Council

**hcup** health & care  
professions  
council



## MSc Nursing (Adult) On Campus – Pre-registration

This course is designed for both home and international applicants who already have an undergraduate degree and healthcare experience, who wish to study on campus to become an adult nurse.

### What you will study

This course will prepare you to care for adults of all ages (aged 18+), who are recovering from an accident or acute illness, living with a chronic health condition or at the end of their lives. You will spend time learning in both theory and practice (including in-hospital and out of hospital). Our simulation centres, incorporating virtual reality and immersive technologies, will help you practice your clinical skills in a safe environment.

### Where your career will take you

On successful completion of the course you will be eligible to apply to register with the NMC, as an adult nurse. Many of our graduates find work with local NHS Trusts or healthcare organisations.

Alternatively, you could continue your studies at UWL. This will help you to enhance your clinical knowledge and skills in a specialist area.

- **Award**  
Masters
- **Duration**  
Full-time with placement 2 years
- **Start date**  
September
- **Location**  
West London Campus

### Entry requirements



Please see page 139

- GCSE English and Maths (grade 9 – 4/ A\* – C) or Level 2 equivalents
- Recognition of Prior Learning (RPL) – 1,000 hours (500hrs theory and 500hrs practice); approximately 4 months formal healthcare experience signed off by a registrant.

All offers are subject to values-based interview, satisfactory enhanced Disclosure and Barring Service (DBS), occupational health checks and a satisfactory reference.



Get in touch:

 **0800 036 8888**

 **courses@uwl.ac.uk**

**nmc**  
Nursing &  
Midwifery  
Council

**hpc** health & care  
professionals  
council



## PgDip Nursing (Learning Disabilities)

Are you ready to make a difference and embark on a rewarding career in nursing? This course has been designed for graduates (in any subject) who would like to become a learning disabilities nurse.

### What you will study

This course will prepare you to contribute positively to the health and wellbeing of people with learning disabilities. You will learn how to assess the often complex social and healthcare needs and support the delivery of robust, evidence-based care plans. You will spend time learning through both theory and practice (including in-hospital and out of hospital). Our simulation centres, incorporating virtual reality and immersive technologies, will help you practice your clinical skills in a safe environment.

### Where your career will take you

On successful completion of the course you will be eligible to apply to register with the NMC, as a learning disabilities nurse. Many graduates find work with local NHS Trusts or healthcare organisations.

Alternatively, you could continue your studies, helping enhance your clinical knowledge and skills in a specialist area.

- **Award**  
Postgraduate Diploma
- **Duration**  
Full-time 2 years
- **Start date**  
September
- **Location**  
West London Campus/  
Berkshire Institute for Health

### Entry requirements



Please see page 139

- GCSE English and Maths (grade 9 – 4/ A\* – C) or Level 2 equivalents.

All offers are subject to satisfactory enhanced Disclosure and Barring Service (DBS), occupational health checks and a satisfactory reference

Shortlisted candidates will attend an individual values based interview. Candidates successful at the interview will be required to complete a 6,000 word portfolio (RPL module), pass mark of 40%, at academic level 6 to be offered a place on this course. Guidance will be provided.



Get in touch:

 **0800 036 8888**

 **courses@uwl.ac.uk**

**nmc**  
Nursing &  
Midwifery  
Council

**hpcp** health & care  
professions  
council



## MSc Nursing (Learning Disabilities) Blended Learning – Pre-registration

This blended learning course has been designed for self-motivated applicants with an undergraduate degree and healthcare experience, who are looking for a two-year flexible route to become a learning disabilities nurse.

### What you will study

This course combines the convenience and flexibility of online learning for the theoretical component of the course, with on-campus practical experience in our state-of-the-art simulation centres and a wide range of placements in NHS Trust and private, voluntary and independent healthcare organisations.

You will be prepared to positively contribute to the health and wellbeing of people with learning disabilities. You will learn how to assess the often complex social and healthcare needs and support the delivery of robust, evidence-based care plans.

### Where your career will take you

On successful completion of the course you will be eligible to apply to register with the NMC, as a learning disabilities nurse. Many graduates find work with local NHS Trusts or healthcare organisations.

Alternatively, you could continue your studies, helping enhance your clinical knowledge and skills in a specialist area.

- **Award**  
Masters
- **Duration**  
Blended learning 2 years
- **Start date**  
September
- **Location**  
West London Campus/  
Berkshire Institute for Health

### Entry requirements



Please see page 139

- GCSE English and Maths (grade 9 – 4/ A\* – C) or Level 2 equivalents
- Recognition of Prior Learning (RPL) – 1,000 hours (500hrs theory and 500hrs practice); approximately 4 months formal healthcare experience signed off by a registrant.

All offers are subject to values-based interview, satisfactory enhanced Disclosure and Barring Service (DBS), occupational health checks and a satisfactory reference.



Get in touch:

 **0800 036 8888**

 **courses@uwl.ac.uk**

**nmc**  
Nursing &  
Midwifery  
Council

**hpcp** health & care  
professionals  
council



## PgDip Nursing (Mental Health)

Are you ready to make a difference and embark on a rewarding career in nursing? This course has been designed for graduates who would like to become a Mental Health Nurse.

### What you will study

This course will prepare you to support people with a wide range of mental health conditions. You will learn how to assess, plan, promote and support a person's recovery, facilitating their involvement and enhancing their level of control. You will spend time learning through both theory and practice (including in-hospital and out of hospital). Our simulation centres, incorporating virtual reality and immersive technologies, will help you practice your clinical skills in a safe environment.

### Where your career will take you

On successful completion of this course you will be eligible to apply to register with the Nursing and Midwifery Council (NMC), as a Mental Health Nurse. Many graduates find work with local NHS Trusts or healthcare organisations.

Alternatively, you could continue your studies, helping enhance your clinical knowledge and skills in a specialist area.

- **Award**  
Postgraduate Diploma
- **Duration**  
Full-time 2 years
- **Start date**  
September
- **Location**  
West London Campus/  
Berkshire Institute for Health

### Entry requirements



Please see page 139

- GCSE English and Maths (grade 9 – 4/ A\* – C) or Level 2 equivalents.

All offers are subject to satisfactory enhanced Disclosure and Barring Service (DBS), occupational health checks and a satisfactory reference

Shortlisted candidates will attend an individual values based interview. Candidates successful at the interview will be required to complete a 6,000 word portfolio (RPL module), pass mark of 40%, at academic level 6 to be offered a place on this course. Guidance will be provided



Get in touch:

 **0800 036 8888**

 **courses@uwl.ac.uk**

**nmc**  
Nursing &  
Midwifery  
Council

**hpcp** health & care  
professions  
council





## MSc Nursing (Top-up)

If you have completed a pre-registration PgDip in Nursing (Adult/Mental Health/Learning Disabilities) at the University of West London, this course will allow you to top-up your award to a masters degree.

### What you will study

This is a part-time course allowing you to study while you work. The course will encourage you to refine your knowledge and skills in healthcare and nursing, including:

- independence and self-direction
- systematic and critical approaches to evaluating evidence
- an understanding of research methodological approaches
- ability to communicate with specialist and non-specialist audiences.

The modules have been designed to have a positive and evidence-based impact on your clinical practice. Following the first module where you explore the principles and process of undertaking a systematic review you will progress onto undertaking an actual rapid review on a topic that relates to your area of practice.

### Where your career will take you

This course will develop your ability to critically analyse and synthesise clinical evidence, work and think independently, via the process of undertaking rapid review. These are qualities that are highly sought-after in the workplace and valued by employers.

- **Award**  
Masters
- **Duration**  
Part-time 1-2 years
- **Start date**  
September
- **Location**  
West London Campus/  
Berkshire Institute for Health

### Entry requirements



Please see page 139

- have a PgDip Nursing (pre-registration) from the University of West London
- be registered with the Nursing and Midwifery Council (NMC)
- currently work in clinical practice in the UK.



Get in touch:

 0800 036 8888

 [courses@uwl.ac.uk](mailto:courses@uwl.ac.uk)

**nmc**  
Nursing &  
Midwifery  
Council

**hpcp** health & care  
professions  
council



## MSc Nutrition, Health and Wellbeing

This course will equip you with knowledge, understanding and practical skills in public nutrition, health and wellbeing, through a number of concisely designed modules and diverse assignments.

### What you will study

This course has been designed and developed in consultation with industry and academic advisors from across the fields of public nutrition, food, agriculture, sports science and consumer sciences.

You will learn about current public nutrition endeavours, including the pandemic status of Type 2 diabetes and other globally recognisable conditions. This will be achieved through learning about the epidemiology and cultural diets and quality improvement for health and wellbeing.

You will also develop a comprehensive understanding of food systems and how these impact the status of public health in both national and global spectrums. Alongside this you will develop the skills to positively influence the public nutrition environment through tested quality improvement methodologies, eating behaviour and health communication skills.

The course will provide insights into the topic of sustainability, providing more employability skills for future industry professionals, especially in the light of arising food and nutrition insecurity threats.

### Where your career will take you

Past students have gone on to work in areas such as public health, clinical nutrition, the food industry, sports and exercise nutrition and health/food journalism.

- **Award**  
Masters
- **Duration**  
Full-time 1 year/  
Part-time 2 years
- **Start date**  
February/September
- **Location**  
West London Campus

### Entry requirements



Please see page 139



Get in touch:

 **0800 036 8888**

 **courses@uwl.ac.uk**



## MSc Paramedic Science – Pre-registration

Our exciting course will give you the relevant knowledge, skills and clinical expertise to deliver safe and effective treatment to patients in the pre-hospital and out-of-hospital environment.

### What you will study

We partner with the London Ambulance Service NHS trust, the busiest emergency ambulance service in the UK, to deliver this trailblazing course - the first pre-registration Paramedic Science course at masters level in the UK.

You will be at the front line of urgent, emergency and critical care and will gain the knowledge you need to become a confident and self-sufficient practitioner, as well as to community refer or discharge a broad range of lower acuity presentations.

Placements will be with both the London Ambulance Service NHS Trust and in several wider health and social care settings.

**Approved by The Health and Care Professions Council (HCPC).**

### Where your career will take you

On successful completion of the course you will be eligible to apply to register with the Health and Care Professions Council (HCPC) as a paramedic. Once HCPC registered, you can apply for a job in an NHS Ambulance Trust

You could also go on to work in GP surgeries, walk-in centres, minor injury units, helicopter emergency services or in research units.

- **Award**  
Masters
- **Duration**  
Full-time 2 years
- **Start date**  
January
- **Location**  
West London Campus

### Entry requirements



Please see page 139

**You will need an undergraduate degree (2:2 or above) in any of the following:**

- a healthcare profession, for example: nursing, midwifery or an allied health profession.
- Biological sciences, with experience of direct patient contact (equivalent to 3 months full-time) in an employed or voluntary role.
- any degree, with at least two years' experience in a registrant or non-registrant clinical role providing quasi-autonomous urgent and emergency unscheduled care.

You will also need to hold a full manual UK driving licence.

Please see full entry requirements online.



Get in touch:

 **0800 036 8888**

 **courses@uwl.ac.uk**

**hcpc** health & care  
professions  
council



## MMus Performance (Classical, Jazz, Popular)

Our exciting MMus Performance course focuses on developing your musical performance in classical, jazz and popular styles at an advanced level.

### What you will study

We have designed this degree to reflect your needs as a professional artist. While some modules focus on practice and others on theory and research, you will notice more overlap as your studies progress.

Developing your individual approach to performance, you will hone your critical thinking and listening skills through practical workshops and classes exploring research skills, performance practices and the psychology of performance. Our range of option modules allows you to focus on areas of interest relevant to your career choices.

Your practical modules will include extensive ensemble work and individual instrumental tuition. Academic modules will include research methods and critical perspectives, which will prepare you to devise and execute a final practice-based research project. You will also take an option module, where you may choose between studio recording, music pedagogy and songwriting.

### Where your career will take you

Upon graduation, you could go on to work as a performer, musical director, educator or academic.

- **Award**  
Masters
- **Duration**  
Full-time 1 year/  
Part-time 2 years
- **Start date**  
September
- **Location**  
West London Campus

### Entry requirements



Please see page 139



Get in touch:

 **0800 036 8888**

 **courses@uwl.ac.uk**



## MSc Person-Centred Health and Social Care

Are you a graduate or practitioner in the field of health and social care?

### What you will study

Suitable for those working in a wide range of professional areas and disciplines, this postgraduate course has been designed to help you respond to the growing need to integrate health and social aspects of care.

As current management approaches give way to a more person-centred approach to care, our course will equip you with the up-to-date knowledge and skills you need to contribute to improving provision in this changing environment.

This innovative postgraduate course, which can be studied on a full-time or part-time basis, is delivered through a series of online weekend workshops, allowing you to balance your studies with your personal commitments.

### Where your career will take you

You could go on to progress in your career sector, find work as a researcher or work as an advisor to academic, health or policy-making organisations.

- **Award**  
Masters/Postgraduate Diploma/  
Postgraduate Certificate
- **Duration**  
Full-time 1 year/  
part-time 2 years
- **Start date**  
September
- **Location**  
Online

### Entry requirements



Please see page 139

We particularly welcome your application if:

- you are a qualified practitioner in a relevant field, such as nursing, midwifery, medicine, social work or psychiatry
- you have extensive experience of primary/secondary healthcare settings.



Get in touch:

 **0800 036 8888**

 **courses@uwl.ac.uk**



## MSc Policing

This course provides you with a transformative learning experience that responds to the changing needs of society.

### What you will study

This degree will focus on work within diverse and complex communities, preparing you for community working, valuing diversity, championing inclusion, ensuring equality, safeguarding and following ethical policing practice.

The course offers the flexibility to specialise in one of the following pathways:

- MSc Policing
- MSc Policing (International Policing)
- MSc Policing (Investigating Serious Crime)
- MSc Policing (Leadership and Management)

You will develop the skills and capabilities to lead and manage complex operations, teams and organisations in order to achieve effective and ethical policing outcomes. All pathways will challenge you to stretch your strategic and critical thinking and to gain the knowledge, skills and competencies to create innovative and sophisticated responses.

### Where your career will take you

Graduates will be well placed to take on specialist or leadership roles in policing, community safety, criminal justice, police education and research into police and society.

- Award  
Masters
- Duration  
Full-time 1 year/  
Part-time 2 years
- Start date  
September
- Location  
West London Campus

### Entry requirements



Please see page 139



Get in touch:

 0800 036 8888

 [courses@uwl.ac.uk](mailto:courses@uwl.ac.uk)



## PgCert Professional Academic Practice

Are you teaching in higher education? Would you like to enhance your practice by exploring the latest developments in learning and teaching in higher education?

### What you will study

Whether you are new to teaching in higher education in the UK or are an established teaching professional, our inspiring online course is designed to help you develop your teaching skills, techniques and methodologies.

This course is suitable for those teaching/supporting learning in universities, on courses validated by a university or for practice educators in the NHS.

To take this postgraduate certificate in higher education you will need to be involved in a minimum of 60 hours of teaching and/or supporting student learning during the year.

This is so you can reflect on your academic practice and actively engage in enhancing your teaching/support for learning as you study.

### Where your career will take you

This course can help you develop your practice as an educator in your current role or help prepare you for your next career move or promotion.

Whilst studying you may have discovered an area you want to study in more depth. Doctorate study enables you to specialise and develop your research and analysis skills.

- **Award**  
Postgraduate Certificate
- **Duration**  
Full-time 1 year
- **Start date**  
September
- **Location**  
Online

### Entry requirements



Please see page 139

You will need to provide evidence that you will be engaging in at least 60 hours of teaching and/or supporting student learning throughout the academic year. You will be invited to a brief conversation via Teams to discuss your current role and responsibilities with regards to the course.



Get in touch:

 **0800 036 8888**

 **courses@uwl.ac.uk**



## MRes Psychology

Prepare for the next step in a psychology research career with this MRes in Psychology course.

### What you will study

This course will teach you cutting edge research methodologies and data analytics, culminating in a substantive research project supervised by an experienced academic.

You will gain first-hand experience of conducting and disseminating real-world research with the potential to impact our theoretical understanding, practice and policy, whilst further developing your skills in research project management, data analytics and critical thinking.

### Where your career will take you

Completing this course will equip you for a range of careers in research and data analysis, including early career research posts (e.g. research assistants), or will allow you to apply for further doctoral level (PhD) study.

- **Award**  
Masters
- **Duration**  
Full-time 1 year/  
Part-time 2 years
- **Start date**  
September
- **Location**  
West London Campus

### Entry requirements



Please see page 139



Get in touch:

0800 036 8888

[courses@uwl.ac.uk](mailto:courses@uwl.ac.uk)





## MSc Psychology Conversion

Would you like to fast-track your route to Chartered Psychologist status? This course will help you on that journey.

### What you will study

This course is accredited by the BPS and will cover the core content you need to apply for GBC membership as a successful graduate.

On this masters-level psychology conversion course, you will develop your critical thinking and the skills and knowledge to plan, implement and report psychological research, using a range of statistical, as well as qualitative, research techniques.

This degree will also help you to gain a wide range of transferable skills in:

- data and behaviour analytics
- communication
- statistics and research methodologies
- understanding of human behaviour
- independence and team working.

### Where your career will take you

Graduates often move into employment as a research or psychology assistant or progress into PhD study, or professional training routes in Psychology towards becoming a Clinical, Counselling, Forensic, Educational, Health or Occupational Psychologist.

- **Award**  
Masters
- **Duration**  
Full-time 1 year/  
Part-time 2 years
- **Start date**  
September
- **Location**  
West London Campus

### Entry requirements



Please see page 139

- Maths and English GCSE or Level 2 equivalent.



Get in touch:

 **0800 036 8888**

 **courses@uwl.ac.uk**



## MA Record Production

This advanced course in record production will show you how to define a creative vision for a project while also managing relationships in the studio.

### What you will study

Your studies will incorporate the production of popular recorded music from both a theoretical and practical standpoint. You will deconstruct and analyse the process of record production, enhancing your ability to understand today's music industry.

The course has been designed to combine the technical skills of advanced recording, digital signal processing and mixing with 'human skills', such as managing sessions, pre-production, developing your career, communication and performance in the studio.

As you progress through the course, you will become more aware of social and consumer trends in the music industry and will create a personal development plan to help you achieve your career goals.

### Where your career will take you

Upon graduation, you could go on to work as a sound engineer, post-production engineer, recording artist, producer, composer, re-mixer, studio manager, company director, product developer or product demonstrator.

- **Award**  
Masters
- **Duration**  
Full-time 1 year/  
Part-time 2 years
- **Start date**  
September
- **Location**  
West London Campus

### Entry requirements



Please see page 139



Get in touch:

 **0800 036 8888**

 **courses@uwl.ac.uk**

## MSc Software Engineering

With the IT sector expanding rapidly around the world, there has never been a better time to take a software engineering course.

### What you will study

This course will introduce you to the latest industry standard technologies and provide the opportunity to specialise in topics ranging from software architecture to implementation techniques, building on necessary skills to tackle modern software systems in an industrial context.

Furthermore, you will become familiar with a broad range of current scholarship work in software engineering and learn how to research and review published work.

This course is led by an academic team with extensive research and professional practice directly in software engineering. You will benefit from the industry experience and current research of supportive tutors, and enjoy access to computer labs, our modern library and a range of digital resources.

### Where your career will take you

Some of the roles you could expect to work in include software architect, solution architect or project manager.

- **Award**  
Masters
- **Duration**  
Full-time 1 year/  
Full-time with internship  
16 months/  
Extended Masters and Enhanced  
Extended Masters 15 months/  
Part-time 2 years
- **Start date**  
February/September
- **Location**  
West London Campus

### Entry requirements



Please see page 139



Get in touch:

 **0800 036 8888**

 **courses@uwl.ac.uk**



## MA Strategic Financial Management (ACCA)

This course is designed to develop a more advanced understanding of the theories and techniques of strategic financial management.

### What you will study

This course is aimed at students and professionals working towards the ACCA professional qualification, or those who have already completed this professional qualification. Relevant exemptions will be granted to ACCA affiliates and members in good standing, with the possibility of completing this course in the shortest span of time.

The course will also enable you to develop the specialist skills, behaviours and qualities required by professional accountants in order to successfully meet the future demands of the profession and make a more meaningful contribution to the organisations you work for.

### Where your career will take you

A career in accounting and finance comes with millions of opportunities and two globally recognised qualifications to back you up.

- **Award**  
Masters
- **Duration**  
Full-time 18 months
- **Start date**  
February/September
- **Location**  
West London Campus

### Entry requirements



Please see page 139

### You can apply to this course through any one of the following routes:

- a 2:2 honours degree from an ACCA-accredited undergraduate degree programme that entitles 9 exemptions from the ACCA exams
- ACCA students who have completed ACCA Applied Knowledge and Applied Skills Levels
- ACCA Strategic Professional Level part-qualified students, Affiliates and Members in good standing (who may claim up to 100 credits exemptions subject the University's RPL rules).



Get in touch:

 **0800 036 8888**

 **courses@uwl.ac.uk**



## PgCert Strategic Workforce Planning

Our Strategic Workforce Planning course has been developed in response to the demand for training and education for the health and social care sector.

### What you will study

This course will support you to think critically about your role as a healthcare manager, to undertake the strategic workforce planning requirements of your organisation.

You will reflect upon a wide range of influences on workforce planning, critically analyse relevance to current service provision and service improvement in your workplace and demonstrate your ability to draw upon this learning to enhance skills in practice.

The course places a strong emphasis on addressing the specific problems, challenges, and issues which staff encounter in the workplace. You will complete an assessment essay that will directly relate to your workplace and the challenges you face.

### Where your career will take you

On successful completion of this course you will be better equipped to fulfil your organisation's strategic workforce planning needs.

We offer a wide range of CPD courses that may help your development goals, or you can explore our healthcare research offering.

- **Award**  
PgCert
- **Duration**  
Full-time 1 year
- **Start date**  
October
- **Location**  
Online Learning

### Entry requirements



Please see page 139

- a qualification comparable in level with a NARIC certificate to demonstrate equivalence
- substantial work experience in strategic workforce planning

In the last instance you will need to map your work experience to level 6 SEEC indicators and submit a recently written work based report. The report should demonstrate a sound grasp of key policy issues and an ability to analyse, synthesise and evaluate complex ideas.

In addition to the above, you must:

- be working for a health or social care organisation
- be sponsored by your line manager or organisational workforce lead
- secure agreement to attend all study days
- complete a personal statement to include why you are applying for the course and what you hope to achieve in your career from the course.



Get in touch:

 **0800 036 8888**

 **courses@uwl.ac.uk**



## MSc Structural Engineering

Our Structural Engineering course will help you to advance your skills in structural analysis, design and adaptation.

### What you will study

This course contains advanced structural modules such as structural adaptation, structural systems analysis, and advanced structural design to enhance your knowledge and understanding of structural engineering within the context of building structures. The United Nation (UN) sustainability goals are covered in the Structural Adaptation module.

Recruitment is anticipated from civil and structural graduates with an interest in analysis and design of structural elements.

You will develop the skill base required for working as a site or design office engineer. The course develops these skills in an integrated manner.

The unique understanding of structural engineering related to building structures will make you highly skilled and sought after by employers.

### Where your career will take you

You will develop the skills base required for working as a site or design office engineer. You will also develop the skills required for involvement in new structural buildings and the rehabilitation of existing structures using traditional and advanced methods.

- Award  
Masters
- Duration  
Full-time 1 year
- Start date  
September
- Location  
West London Campus

### Entry requirements



Please see page 139

We may also offer you a place based on a combination of an ordinary degree (eg BSc/BEng in engineering without honours) together with relevant experience from within the work environment. All applications are considered individually.



Get in touch:

 0800 036 8888

 [courses@uwl.ac.uk](mailto:courses@uwl.ac.uk)



## MSc Sustainability Business Specialist

Learn how to manage and lead business sustainability issues and build innovative solutions on our MSc Sustainability Business Specialist degree.

### What you will study

This postgraduate degree provides an in-depth understanding of the practical processes that support sustainable enterprises.

It will provide you with a platform to evaluate the coordination of businesses with the environment, assess productive innovations and develop global management leadership. This course will include specialist skills around organisations' environmental, social and governance (ESG) management, whether established ventures or business start-ups.

With an underlying theme of sustainability, the list of modules covers topics such as economics, communication, management and entrepreneurship.

The course is geared towards individuals seeking to understand how business undertakings can be assessed within the knowledge of sustainability, and early/mid-career professionals seeking to upskill in business sustainability.

### Where your career will take you

The course provides an upskill in business sustainability issues and builds innovative solutions for you to develop a practical career as a sustainability manager or specialist.

Potential career fields for Sustainability Business Specialists graduates include environment, sustainability consultancies, sustainability and Corporate Social Responsibility (CSR), public sector, sustainable finance or B Corporations.

- **Award**  
Masters
- **Duration**  
Full-time 1 year
- **Start date**  
September
- **Location**  
West London Campus

### Entry requirements



Please see page 139

On successful completion of the Sustainability Business Specialist course, you will also be eligible to apply for Institute of Environmental Management and Assessment (IEMA) membership as an Associate Member.



Get in touch:

 **0800 036 8888**

 **courses@uwl.ac.uk**

## IEMA

Transforming the world  
to sustainability

As soon as you start your course you will have access to a range of services and expert advice from our Careers Consultants who will help you identify and articulate your abilities as well as plan and manage your career. This support will continue after your course for as long as we can help you.

# Making the most of career opportunities



► For more information, please visit [www.uwl.ac.uk/careers](http://www.uwl.ac.uk/careers) or email [careers@uwl.ac.uk](mailto:careers@uwl.ac.uk)



## Our Careers Service offers:

- Personalised, impartial and confidential advice and guidance on progression on a wide range of careers including job hunting, assessment and selection procedures and professional qualifications.
- Careers workshops on topics such as professional networking, presentation skills, successful application and job search techniques.
- Access to online careers resources including occupational information, practice psychometric tests.
- CV and interview help and job hunting sources.
- E-guidance for those who find it difficult to get to campus.
- Sector-specific employer presentations sharing industry insights and application tips.
- Individual appointments at a time to suit you including evenings and Saturday mornings.
- Convenient online system to book appointments, events and apply for jobs.

## Our Employment Service offers:

- Information about vacancies with a wide range of regional, national and international employers.
- Direct notification of new part-time and graduate vacancies tailored to your interests and subject areas.
- Employment advice.
- Employer presentations on campus.

## Volunteering

Volunteering is the perfect opportunity to develop leadership, management and employability skills whilst having fun.

Our volunteering team can give you weekly updates about relevant opportunities in the local community and on longer term projects.

They will also advise you on choosing an opportunity that could enhance your career options.



By studying with us, you will join our global community of more than 150,000 graduates in over 50 countries.

# Connected for life through our Alumni network

Our Alumni Team works to support your lifelong relationship with the University.

As a student you can attend our alumni events to network with, and learn from, our alumni.

When you graduate you can enjoy a range of benefits:

- Alumni card for access to the campuses and library after graduation
- Alumni communications: annual alumni magazine, social media updates and e-newsletter
- Exclusive alumni events and activities

- Lifelong careers support
- Postgraduate study discounts
- Professional development workshops, careers fairs, webinars and courses
- Special alumni discounts
- Volunteering opportunities.

 UWLAlumniAssoc

 @UWLAlumni

 UWL Alumni Association



▶ For more information, please visit [www.alumni.uwl.ac.uk](http://www.alumni.uwl.ac.uk)



We are committed to giving you the best university experience possible. So we are constantly updating our research, training and leisure facilities. It is an exceptional university experience, and one that makes you ready for your future career.

# Modern facilities

## Biomedical Science labs

The new Biomedical Science labs are fitted to an extremely high standard allowing us to deliver our modern, forward-looking curriculum at a practical level, providing laboratory training that will give you the best possible start as a research or clinical scientist. All the equipment in the labs from pipettes to microscopes are identical to that used in modern pharmaceutical, nutritional and clinical laboratories.

## Blast Radio Studios

Every official student radio station needs its own broadcasting studio, and Blast Radio has one. It is the perfect environment for future broadcasters as the teaching studio is right next door, so you can experience first hand what a broadcasting career looks and sounds like.

## Computing, Engineering and Built Environment Facilities

These industry standard facilities include a concrete-testing laboratory, geotechnics and soil engineering laboratories, a hydraulics laboratory and an architecture studio. We have dedicated computing laboratories including cyber security, artificial intelligence and machine learning laboratories.

## Concert Hall – Vestry Hall

A classical music performance space which has just been restored to its original Victorian character, features a Steinway D concert grand piano, a full complement of orchestral percussion instruments and seating for 50. The hall is connected to two state-of-the-art recording and mixing studios featuring an industry-standard Neve recording console and Dolby Atmos surround-sound.

## Crime Scene Rooms

Our dedicated crime scene rooms give students the opportunity to practise evidence collection and crime scene analysis techniques.

## Digital Futures Lab

Offers students the opportunity to engage with and be inspired by the latest digital technologies. State of the art tablets and dual screen laptops allow for creative teaching and learning.

## Flight Pad

To support the development of our Commercial Pilots and Air Transport Management students, the London Geller College of Hospitality and Tourism utilises a state-of-the-art Boeing 737-800 flight simulator.

The Flight Pad can replicate any scenario and fly to any airport around the world, which makes it realistic for pilot training.

## Forensic Science Labs

Our labs include industry-standard equipment including DNA and Fingermark analysis.

## Mock Court Room

Our impressive mock court room gives students at the School of Law a chance to practise mooting, trial strategy and advocacy. You will have legal training in a realistic, inspiring environment.



The Townshend Studio



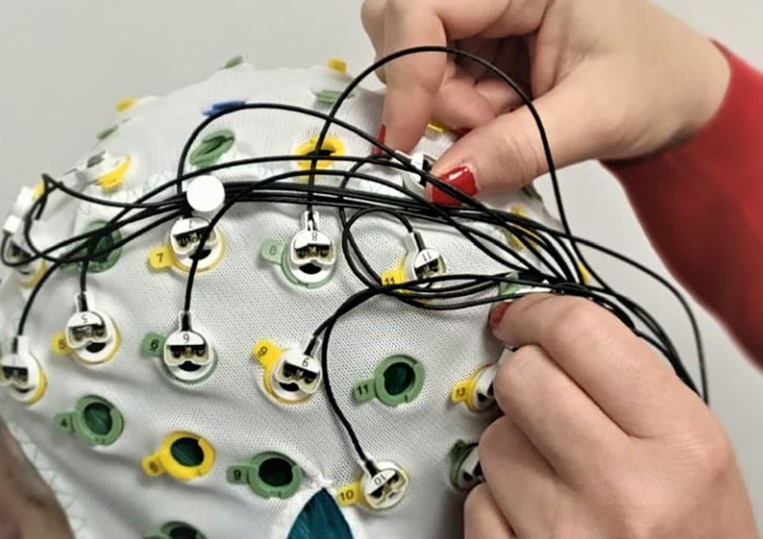
Paragon Annex Studios



Digital Futures Lab



Performance Centre – Lawrence Hall



### Music Recording Studio and Labs

Our £1m+ investment in the Paragon Annex Studios makes our music complex one of the biggest in the country. Combined with facilities at our Ealing campus, we have 3 recording studios, 3 teaching studios, 3 electronic music labs housing some of the world's rarest and most sought-after vintage and modern equipment.



### Other Creative Subject Facilities

Professionally-equipped studios for photography including a dark room, radio and TV production studios as well as print, sewing, knitting and pattern-cutting facilities. We also have music practice pods, sound studios and recording studios across our campus sites.

### Performance Centre – Lawrence Hall

Our modern space immerses London College of Music students in the reality of professional performance and features a stage, Tungsten and LED performance lighting and advanced sound and audio visual systems.

### Pillars Training Restaurant

Our training restaurant helps London Geller College of Hospitality and Tourism students practise their professional skills and gain real experience in the service environment. The Savoy Educational Trust Kitchen has industry-standard facilities too.



The Faringdon Research Centre



## Psychology Research Facilities

Our psychology research facilities include state-of-the-art brain imaging electroencephalogram (EEG), eye tracking equipment, psychometric tests and industry-standard research software.

## Simulation Centres for Nursing, Midwifery, Paramedic Science Operating Department Practice and Healthcare

If you are an aspiring health professional, our centres in Brentford and Reading provide outstanding facilities (including virtual reality and immersive rooms and a 'simulance') and specialist teachers to help you learn and develop the practical skills and knowledge required in modern healthcare settings. We also provide training post qualification, supporting you to develop the knowledge and skills required for senior clinical roles.

## The Faringdon Centre

The Faringdon Research Centre for Non-Destructive Testing and Remote Sensing is the latest development in the School of Computing and Engineering. It has a wide range of sophisticated technologies and equipment, including Ground Penetrating Radar systems (seven different sets of antenna systems from low to very high frequency antenna systems); a Light Falling Weight Deflectometer (LFWD); a 3D-Laser Scanner; an IBIS-FS Interferometric Radar System for monitoring structural movements and deflecting vibrations; and many more. The Centre is carrying out several pioneering research projects in collaboration with industry and international partners.

## The Geller Institute of Ageing and Memory

The Geller Institute of Ageing and Memory (GIAM) delivers research and education that informs and improves quality of care and support for people living with dementia, their families, and health and social staff caring for them. GIAM examines care across a range of care settings and for a diverse range of people.

## The Townshend Studio

The Townshend Studio is a learning and exhibition space which is home to a range of Pete Townshend's iconic synthesisers and instruments from the '70s through to today.

## West London Food Innovation Centre

The West London Food Innovation Centre assists food and drink start-ups as well as small and medium-sized enterprises to turn innovative concepts into marketable products.

It offers services ranging from product formulation to sensory evaluation and facilitates a scientific approach to new product development for its clients.

## Westmont Enterprise Hub

Westmont Enterprise Hub is an "Ideas Space" for early stage start-ups and an incubator for entrepreneur pre-market businesses sourced from within the University (student, staff, researchers and alumni) and from the local community. It provides endless opportunities to ideate, innovate and evolve business solutions using peer mentoring, specialist business advisors and effective networking opportunities through targeted meet-ups, workshops, coaching

and mentoring within a bespoke plan of programmed intervention and support.

## Weston Hall

The University's beautiful auditorium is a bright, comfortable and inspiring place to learn in. It can seat over 400 people at conferences, lectures, performances and academic events. It can also double as a concert hall for classical music and theatre.

## Rami Ranger House

Rami Ranger House is a focal point for our postgraduate research students providing a dedicated facility for social and learning interaction. It provides a space where postgraduate research students can socialise and network, or study quietly with access to lockers, printing, scanning and photocopying equipment, and tea and coffee making facilities.

## The Richard Wells Research Centre

Our innovative centre is at the forefront of research into patient safety, mental health, midwifery, family health, and learning disabilities. Our nursing, midwifery and healthcare students find it invaluable.

## The Savoy Suite

This training suite gives future business people a taste of industry, thanks to its board room, presentation theatre and break-out area.

## The Townshend Studio

The Townshend Studio is a new teaching, learning and exhibition space which is home to a range of Pete Townshend's iconic synthesisers and instruments from the '70s through to today.



# Setting you up for success

## IT Facilities

Our IT is just one of the many facilities we have on campus to make your life as a student easier. Our teams work together to build a dynamic computing environment including a high-speed network for the University's community allowing you to connect your personal devices to the campus network. During your time with us you will be able to enjoy the following features:

- WiFi across all our campuses and on our shuttle buses
- Access to PCs and Apple Macs on campus
- Microsoft Office software for free
- Office 365 email
- Access to the Student Portal
- Access to Blackboard online learning environment
- Access to 5 TB of MS OneDrive cloud-based storage
- Access to Student Mobile App (MyUWL App).

## Student Portal

The Student Portal should be your first port of call for any information or advice. It is a single place for you to find and access online services and information that you will need during your time here, including:

- Your timetable
- Access to learning resources on Blackboard
- Access to your UWL e-mail
- Up-to-date notices, news items and information
- Access to Library resources
- Advice, help and support
- Online storage space through UWL OneDrive
- Access to a huge library of online tutorials using Lynda.



## Libraries

As your studies progress, there is one place you will want to take full advantage of – the UWL library. More than just a building full of books, the library will form a central part of your university life. All students at UWL automatically belong to our libraries at both Ealing and Reading which provide study spaces, PC and iMac workstations and space to use your own devices. As well as an extensive range of hard copy books, journals, magazines and newspapers, you can access a vast array of digital resources including the Perlego ebook collection.

### West London Campus Library

The Paul Hamlyn Library is open continuously including overnight from Monday morning until Friday evening and from 8am to 9.30pm at weekends during term time with revised hours during vacations, enabling you to study around your personal and work schedules. The library is a light open space spread across three floors with different types of study environments to suit your requirements at various times including group study rooms and zones, 1:1 and personal spaces. And of course, a variety of furniture to suit your needs.

### Reading Campus Library – Nursing, Midwifery and Health

The Library covers nursing and health-related topics, along with computers, study spaces, and library support.

All library sites are equipped with PCs and printers, copiers and scanners. Each course has a Librarian who can help you with using the library's search tools so that you can find, evaluate and reference information sources. Additional support can be found within the library buildings as well as through appointments at the Brentford site. The Brentford site also has a book collection and returns service.



[uwl.ac.uk/library](http://uwl.ac.uk/library)





Our University culture is all about support, diversity and inclusion. We believe that everyone has the ability to excel in their career, and that no one should miss out on expert training.

## *Life at the University of West London: Support*

► For further information  
[studentservices@uwl.ac.uk](mailto:studentservices@uwl.ac.uk)  
or telephone  
020 8231 2345



### **Our culture of support**

The UWL community is incredibly diverse: our students and tutors come from all over the world, and bring fresh perspectives, skills and areas of expertise to our vibrant learning environment. Our community is made up of people of all ages, ethnicities, abilities, religions and socioeconomic backgrounds.

### **Student Services**

We want you to get the most out of your time with us, and encourage you to come and talk to us if you are worried about anything.

### **Student Money and Immigration Advice Team (Funding and money advice)**

Confidential and specialist advice is available on student funding, budgeting, money management, welfare benefits and council tax exemption. The team can advise on extra financial assistance from a range of funds, scholarships and bursaries.



## International Student Advice

The Student Money and Immigration Advice Team offer advice to our international students. They will help with any questions about visa extension, your immigration status and support whilst studying.

## Faith Service

The Interfaith Adviser provides inclusive and confidential pastoral support to the whole university community. They are available to listen and chat with all members of UWL, regardless of religious or non-religious belief.

## Disability and Mental Health Support

Disability shouldn't be a barrier to learning. That is why we are fully committed to providing students who have learning differences, physical conditions or mental health difficulties with confidential support and specialist guidance.

At the university we are fully committed to supporting students who experience a range of conditions and reducing any barriers those may create to academic study.

The Disability and Mental health team, as part of the University's wellbeing provision, have dedicated advisors who work alongside students to design and implement person-centred support.

The team can support students with a variety of conditions including, but not limited to:

- Physical/Mental health conditions
- Specific learning differences (dyslexia or ADHD for example)
- Social communication difficulties, such as Autism
- Long-term medical conditions
- Sensory impairments.

Our Disability and Mental Health team can help you with:

- Individual Support Plans (ISP) – implementing reasonable adjustments eg extra time in exams, assistive technology, accessible learning materials, ergonomic chairs etc.
- Guidance around Disabled Students' Allowance (DSA) and the application process.
- Diagnostic Assessments.
- Support and advice around obtaining medical evidence where appropriate.
- Screenings for students who have a suspected specific learning difference, for example; dyslexia, AD(H)D and dyspraxia.

The support we offer you is flexible and tailored to meet your individual needs. If you have a disability or long term-health condition, contact us so we can discuss your requirements and guide you to any reasonable adjustment you might need.

## Student Counselling

The counselling service is staffed by trained counsellors and psychotherapists who are all professionally qualified, widely experienced and accustomed to helping people from different backgrounds and cultures. Counselling is a safe, confidential space to talk about your life, and anything that may be confusing, difficult, painful or uncomfortable. Through this process you may deepen your understanding of what is happening in your life. This can help you cope better, develop alternate ways of dealing with the situation and assist you in making choices. If you feel your well being is being affected by your difficulties, the Counselling Service is available for you to talk in confidence about any issue that concerns you while you are a student at the University of West London.

## The Welfare Team

The Welfare Team are non-judgemental, here to listen and offer a safe and welcoming service to all students who are worried, anxious or in crisis over personal problems. We provide impartial advice, support and information if you are concerned about issues such as relationships, stress, conflict, sexual violence, homelessness or abuse.

The Student Service Teams can link you to specialists who can give guidance on disability support, finance, mental health, homelessness and other personal problems which may be helped through counselling.



## *Life at the University of West London: Campus*

Just next door to the city centre, there are endless ways to explore the capital's art, culture and nightlife from our bustling west London campus in Ealing. The campus itself is surrounded by beautiful parks and green spaces, with plenty of lovely cafés and eateries to enjoy.

### **A beautiful campus environment**

Studying at our Ealing site gives you the best of both worlds: beautiful green spaces on your doorstep, and the hustle and bustle of the city centre just a stone's throw away. Our campuses are all designed to enhance your student experience and provide amazing opportunities to connect with industry leaders in west London and central London.

### **Study next door to central London**

Our west London campus has great transport links to central London, which is bursting with successful businesses, industry leaders and a career-driven culture that you can immerse yourself in.

When you are not busy exploring the city's inspiring business districts, there are plenty of ways to soak up the culture. London is home to some of the UK's best art galleries, fashion exhibitions, museums, sport, music, comedy, theatre, nightclubs, restaurants and shopping.

### **Our Ealing site**

Our modern Ealing site is a safe, comfortable and inspiring place to study. It has a laid-back and friendly atmosphere, with attractive surroundings.

It is also right in the middle of west London's prosperous business hub, and close to many of the employers we work with. You will have lots of chances to gain useful work experience, get first-hand knowledge of your industry and start building the connections you will need from here on in.

### **Our Brentford site**

The Brentford site is home to three of the University's nine academic schools – School of Human and Social Sciences, College of Nursing, Midwifery and Healthcare and The Claude Littner Business School. This site is located close to our Ealing site with a free shuttle bus running between sites and Ealing Broadway.

### **Reading campus**

The Berkshire Institute for Health, situated in Reading, is home to our College of Nursing, Midwifery and Healthcare. The campus is 30 minutes from London Paddington by train.

All of our campuses will provide you with the best training and practical opportunities for your career.



## *Life at the University of West London: Accommodation*

We know that accommodation is key to your university experience and you want to love where you live.

All our sites are fully managed with 24/7 security onsite to provide safe and secure accommodation with high levels of Health and Safety compliance.

We offer a range of options that are competitively priced in the surrounding areas of Ealing, Acton, White City and Wembley.

If you are studying at the Berkshire Institute for Health in Reading, we have strong links with local student accommodation providers, so you can feel safe in the knowledge that your home has our stamp of approval.

- Contents insurance included
- Free utility bills
- No deposit required
- No guarantor
- No Interest Flexible Instalment Plan.

► For further information about accommodation, please email: [accommodation@uwl.ac.uk](mailto:accommodation@uwl.ac.uk), or call **+44 (0) 20 8231 2335**  
[www.uwl.ac.uk/accommodation](http://www.uwl.ac.uk/accommodation)



# *Life at the University of West London: Your Students' Union*

UWL Students' Union  
ranked 1st in London,  
and 2nd in the UK  
National Student Survey 2024



## Your Students' Union

One of the great benefits of being a student at the University of West London is that you automatically become a member of the Students' Union, voted the number one Students' Union in London (NSS 2024). The UWL Students' Union (UWLSU) is here for you throughout your studies and can help ensure you get the most out of your time here.

Representing you and your views throughout your academic experience is one of UWLSU's main roles. As a democratically-led organisation, three students are elected each year by the student body to represent the views of students at a senior leadership level. This means that your voice will be heard, and this voice is truly at the heart of everything that UWLSU does. UWLSU offers great opportunities through its course Rep scheme, student delegate roles and student positions

throughout the organisation. These roles provide invaluable skills that can further enhance your academic qualifications and your time at university.

At UWL you will have access to over 15 different sports teams that train at the prestigious Gunnersbury Park and Ealing Trailfinders sporting grounds. There are also great on-campus training facilities like our state-of-the-art UWL Sports Centre which is run by the SU.

The diverse range of societies on offer is the best place to meet like-minded students and build a community. These common interest groups can be your gateway to making some new friends, career networking, extra-curricular activities, and opportunities to gain new skills and experiences.

Another way in which UWLSU supports students is through a free, impartial and confidential advice service. Professional staff members provide students with advice, information, and advocacy on a range of issues they may be facing, with a focus on academic issues.

As well as Freshers Week, UWLSU hosts a bumper events programme throughout the year including Black History Month, LGBTQ+ History Month and Halloween.



UNIVERSITY OF WEST LONDON  
STUDENTS' UNION

► Get in touch:

Facebook @westlondonsu

Twitter @uwl\_su

Instagram @uwl\_su

[www.uwlsu.com](http://www.uwlsu.com)

020 8231 2276



# UWL Sports and Recreation

UWL's fitness facility is run by the Students' Union and consists of a state-of-the-art gym, spacious studio and changing facilities.

## UWL Sports Centre

UWL Sports Centre is your very own fitness hub at university. It is home to our newly renovated UWLSU Gym and dance studio. This is the perfect place to maintain a healthy, balanced lifestyle in between your busy uni life.

## Gunnersbury Park Sports Hub

Students will also be able to benefit from preferential booking arrangements at the new Gunnersbury Park Sports Hub that includes two external floodlit artificial grass pitches, natural grass cricket and football pitches, indoor basketball courts, tennis courts, changing rooms, and a gym.

## Trailfinders Sports Club

As one of our students, you will be able to use Ealing Trailfinders Sports Club where the facilities are second to none. This professional club facility has an all-weather 3G rugby pitch and grass pitches, cricket ground and pavilion, floodlit Netball, as well as 5 and 7-a-side football courts.

## Create your own club

There are plenty of amazing options for getting involved in sport and physical activity while you are a student at UWL. You can sign up for one of our existing clubs and societies, create your own by talking to UWLSU, or get involved in one of the many low commitment offerings.







At the University of West London, we welcome students from all over the world.

# *Welcoming our international students*





### Before studying with us

Before joining us, you can get all kinds of support and advice from the International Office including how to apply and information about studying at the University.

To find out more, or to contact a member of the International team, visit [www.uwl.ac.uk/international](http://www.uwl.ac.uk/international)

### During your studies

Once you have enrolled at the University, our support includes:

- an orientation programme, designed to include help with enrolment and social activities
- advice on finances and opening bank accounts
- information about student organisations across the UK.

You can also get specialist advice and support from our Student Services, including student support, visa assistance and information on finance and accommodation.

To find out more email [international@uwl.ac.uk](mailto:international@uwl.ac.uk)

### Studying with us for a shorter period – Study Abroad Programme

If you are already studying at a university in your home country and would like to study in London with us for one or two semesters, you can apply to take part in our Study Abroad Programme.

You will gain experience studying in London whilst also obtaining credits that may count towards your degree at your home institution.

### Scholarships and funding

We offer international students the chance to apply for one of our International Ambassador Scholarships. These are available for both our September and February intakes; for more details visit [www.uwl.ac.uk/international/fees-and-funding](http://www.uwl.ac.uk/international/fees-and-funding)

US students may also be entitled to US Federal Direct Loans.

For further information about all available scholarships and funding for international students, please visit [www.uwl.ac.uk/international](http://www.uwl.ac.uk/international)

# How to apply and entry criteria

Applications for the majority of our postgraduate courses can be made directly to the University. Please use the 'course search' on our website to find your chosen course and then click on 'apply now'.

You will need to apply via UCAS for the following postgraduate courses

- PgDip Nursing (Adult)
- PgDip Nursing (Learning Disabilities)
- PgDip Nursing (Mental Health).

To study with us, you will need to meet our general entry requirements (including English language requirements), as well as any other course-specific criteria.

## The minimum entry requirements for postgraduate study:

- Honours degree from any university in the UK or Republic of Ireland.
- Honours degree from an approved higher education institution outside the UK or Republic of Ireland.
- Recognised equivalent professional qualification.
- Industry experience equivalent to qualifications.

## English Language Requirements (if your Honours degree was not taught in English)

### Taught Masters:

- IELTS 6.5 or above (with no element under 5.5), or equivalent English Language qualification.

### For PhD:

- IELTS 6.5 or above (with no element under 6.0), or equivalent English Language qualification.

This requirement may vary across our courses. Please refer to the course pages on our website for further information.

## Portfolios

Some courses require a portfolio of your own work to show your creative or technical skills.

## Auditions

Performance courses require you to attend an audition.

## Interviews

You may need to attend an interview before we make you an offer.

## Visiting us

We hold postgraduate open events through the year. Our postgraduate open events showcase all our postgraduate courses and are a great opportunity for you to visit us.

For details and to book a place, visit [www.uwl.ac.uk/pgopenday](http://www.uwl.ac.uk/pgopenday)





# Fees and finance

## Postgraduate Loan

Students who live in England and are eligible can apply for a postgraduate loan to help with costs associated with postgraduate masters studies. The loan is a contribution to help with course-related costs such as tuition fees and materials.

## Fees

**Students have the option to pay in instalments.**

### UK/EU students:

- 34% in September 2025
- 33% in January 2026
- 33% in April 2026.

### International students:

- min 50% upon enrolment
- then three equal instalments in November, December and January (Sept start only).

**Students must pay their fees in full at enrolment, if they are taking:**

- a single module course
- a course lasting less than one academic year
- a course with a fee of £250 or less.

## Sponsored students

If your sponsor is paying your fees, you need to supply a copy of an official purchase order form before or at enrolment.

To find out how to pay your fees, please visit [www.uwl.ac.uk/fees](http://www.uwl.ac.uk/fees)

You can also refer to our tuition fee policy on our website for more information [www.uwl.ac.uk/about-us/policies-and-regulations](http://www.uwl.ac.uk/about-us/policies-and-regulations)

## Help with funding

Make sure you apply for funding in plenty of time, so it is available from the start of your course.

Since funding is limited, it is important to consider how you will finance your studies before you begin your course.

## Options may include:

- Loans.
- Sponsorship from your employer.
- UWL scholarships and research funding.
- Research Council funding.
- External trusts and charities.
- Savings/salary from employment.

For further information about what funding is available please go to: <https://www.gov.uk/funding-for-postgraduate-study>

▶ For information, please visit [www.uwl.ac.uk/funding](http://www.uwl.ac.uk/funding)



If English is not your first language, or if your previous education was in another language, you will need to provide documented evidence of your English language competence.

## *English language requirements*

We accept a variety of English language tests, including International English Language Testing Systems (IELTS). The standard IELTS requirement is 6.5 overall, with a minimum of 5.5 in each element (Reading, Listening, Speaking and Writing). Other English language examinations will be considered at a level comparable to IELTS 6.5.

If you are applying for a PhD or professional doctorate, you must demonstrate your English language proficiency through evidence of IELTS at overall 6.5 (with a minimum of 6.0 in all four skills).

If you are a student based in a country where the school system is taught in English, you may not need to take an additional English language test and we may accept your general qualifications.

For more information on the specific requirements for your country, please contact the International Office at [international@uwl.ac.uk](mailto:international@uwl.ac.uk)

### **Pre-sessional English Language Courses**

If you have not met the English language requirement to study a postgraduate degree course with us, you may be eligible for one of our pre-sessional English language courses. For on-campus pre-sessional English courses, please note that international applicants will be required to have a SELT (UKVI academic IELTS) as per UKVI regulations.

If you have any other qualifications not listed on our website, please email the International Office on [international@uwl.ac.uk](mailto:international@uwl.ac.uk)

# Entry requirements: Symbol key

All applications are considered individually.



## UG Honours degree

These courses require applicants to have an undergraduate honours degree in a relevant subject.



## DipHE or HND

Some courses will accept these alternatives to an undergraduate honours degree, in many cases this will need to be supplemented with relevant work experience – all applications are considered on an individual basis.



## Work experience

Candidates who do not meet the academic requirements may still qualify for entry through relevant work experience.

For some courses you must be working in the industry as a requirement of entry to the course. Please see individual course pages on our website for details.



## Extended Masters

If you have completed an undergraduate degree and not met the entry criteria for your preferred course, you may qualify for our extended masters option. It includes two additional modules.



## Interview/audition

You may be invited to an interview or audition as part of your application process.



## Portfolio

Candidates must provide a portfolio of their work showcasing their abilities and past work.



## GCSE

You are required to have GCSE English and Mathematics at Grade 4 (Grade C if awarded prior to 2017) or above.

Pre-registration Midwifery applicants must have 5 GCSEs at Grade 4/C or above including Maths, English and a Science subject.



## Professional qualification

A professional qualification may be an acceptable alternative to an undergraduate honours degree, or necessary for entry.



## Additional or specific entry requirements

Specific requirements apply or additional entry routes are offered. Please check the course page on our website for full details.



## Masters degree

Applicants shall normally have a masters degree or equivalent in the relevant field of study.



## Nursing Interview

If you have the qualification for this course you will attend an individual value-based interview online with an academic, clinician and a service user/ carer (where available).



## Nursing Portfolio

You will need to complete a portfolio for Evidencing Graduate and Transferable Skills, which is required for entry and be able to evidence 500 hours of formal 'hands on' healthcare experience, signed off by a registrant.



Proud sponsors of Brentford Football Club



Royal Botanic Gardens in nearby Kew

# Here for the love of West London

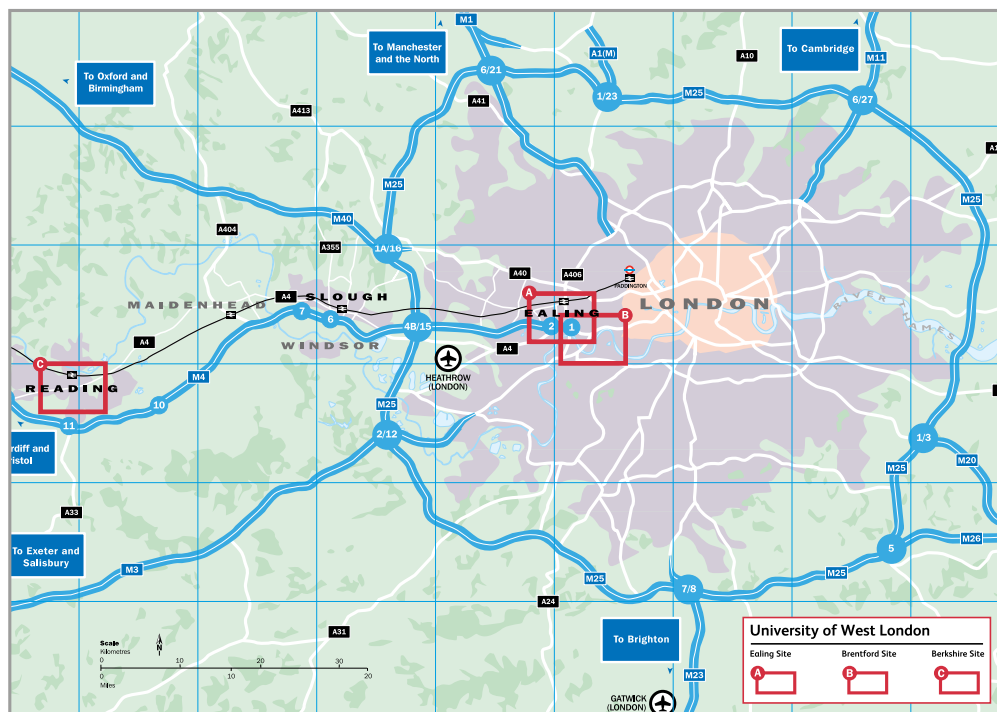


Based in popular west London, we are in the heart of one of the UK's most successful business regions, with a number of global organisations, such as SEGA, PepsiCo and Sky, based locally. Both Ealing and Brentford are vibrant and multicultural, combining a cosmopolitan atmosphere with spacious parks and relaxed café culture.

The region is brilliant for transport. Our west London campus is close to both Heathrow Airport and

central London, served by fast rail links and has great local bus services. We run a free shuttle bus between Ealing Broadway and South Ealing stations and our Ealing and Brentford sites.

Our Reading site is within walking distance of the main railway and bus stations, next door to car parking and within easy reach of the town's 'park and ride' bus stops. People come from miles around for the shopping and nightlife.





# Ealing and Brentford...

## Ealing campus

### St Mary's Road, Ealing, London W5 5RF

Our Ealing campus is just 30 minutes on the Underground from central London or 10 minutes by fast train to Paddington. It is also 20 minutes from London Heathrow International Airport. Ealing has fast rail links from Reading and London, great local bus services, and it is easy to get to from all London Underground stations.

#### By bus

The nearest bus routes to the site are the 65, E2, E8, 207, 427, 607, E3 and E9.

#### By Underground

The closest Underground stations are South Ealing on the Piccadilly Line (10 minute walk) and Ealing Broadway which currently services the Central, District and Elizabeth Lines (15 minute walk). The Elizabeth line has now opened with Reading 48 minutes away, Paddington 10 minutes away and Liverpool Street 24 minutes away.

#### By train

Ealing Broadway also has other regular train services to and from London Paddington (10 minutes), Slough (25 minutes) and Reading (50 minutes).

#### By road

The Ealing site lies on the B455 between the A4 and the A4020, Uxbridge Road. The M4 motorway is a few minutes' drive away from Ealing (Junction 2), and the A40, M40 and M25 are all easily accessible.

## Brentford campus

### Boston Manor Road, Brentford, Middlesex TW8 9GA

Our Brentford site is 1.5 miles south of the Ealing site. There are great bus and rail services nearby giving quick and easy access to central London. In addition, the free shuttle bus runs to and from both sites, and local tube stations.

#### By bus

The bus routes closest to the Brentford site are the 65, E2, E8 and H91.

#### By Underground

The nearest Underground station is Boston Manor on the Piccadilly Line (15 minute walk).

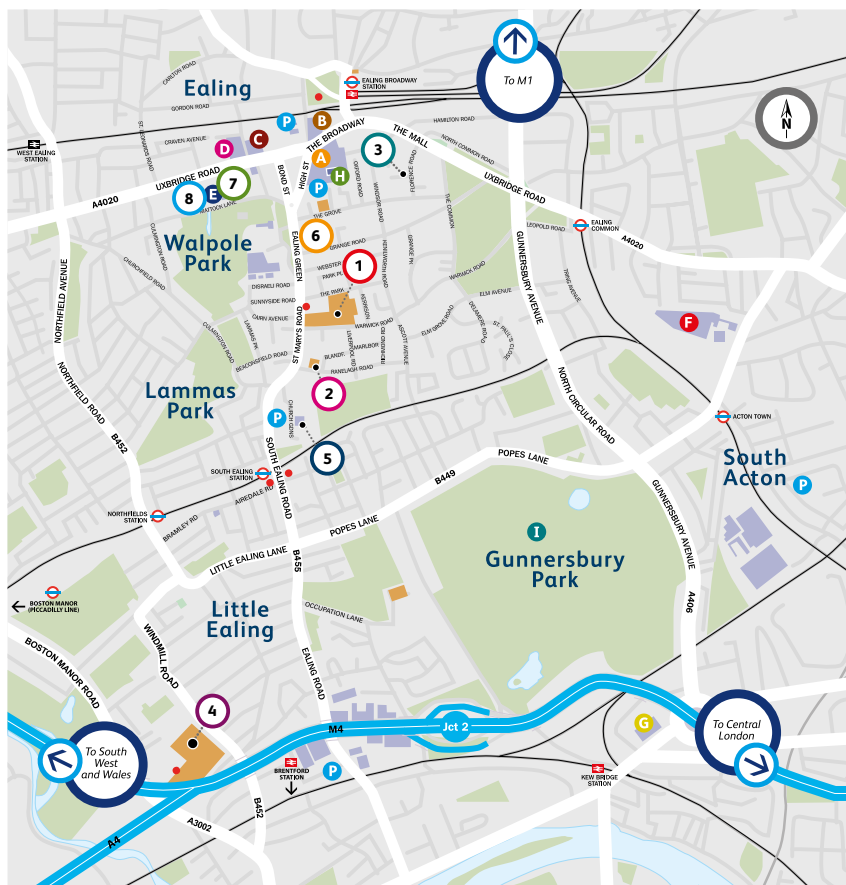
#### By train

Brentford mainline train station is a 5 minute walk from the Brentford site with scheduled trains into central London arriving at Waterloo station.

#### By road

The Brentford site is on the A3002, Boston Manor Road which is just off of the A4, Great West Road.





### University Buildings

**1**

#### Ealing Site

- Academic Administrative Support Centre (located in the Heartspace)
- Academic Office
- Accommodation Service
- Administration
- London College of Music
- London Geller College of Hospitality and Tourism
- London School of Film, Media and Design
- Paul Hamlyn Library
- Pillars Restaurant
- School of Computing and Engineering
- School of Law
- School of Medicine and Biosciences
- Student Services
- Students' Union
- UWL Sports Centre

**2**

#### Vestry Hall

- London College of Music

**3**

#### Florence Road Surgery

**4**

#### Brentford Site

- The Claude Littner Business School
- College of Nursing, Midwifery and Healthcare
- School of Human and Social Sciences
- Nursing Simulation Centre
- Academic Administrative Support Centre (located on level 2)

**5**

#### St. Mary's Church

- London College of Music performance venue

**6**

#### Drama Studio London

**7**

#### Cavendish House

- Institute for Policing Studies
- Digital Futures Lab

**8**

#### Century House

### Additional Information

**A** Broadway Shopping Centre

**B** Arcadia Shopping Centre

**C** Ealing Town Hall

**D** Ealing Civic Centre

**E** Questors Theatre

**F** Acton Hospital

**G** Leisure Centre

**H** Library

**I** Gunnersbury Sports Centre

**•** Shuttle Bus Stops

**P** Parking

# ...and Reading

## Reading Campus

**Berkshire Institute for Health,  
Fountain House,  
2 Queens Walk,  
Reading RG1 7QF**

### By bus

The local bus routes include the 15, 16, 17, 19, 20, 20a and 21.

### By train

The Berkshire Institute for Health is within walking distance of Reading train station. From here, First Great Western offers good connection to both London and the South. London Paddington to Reading is less than 30 minutes.

### By road

The campus is in Reading town centre, just off the A329 ring road, and there's parking nearby at Broad Street Mall. The M4 (Junctions 10 and 11) is just a few minutes' drive away and the M40 and M3 are easy to reach.





**University Building**

**1** .....  
Berkshire Institute for Health  
Tenth Floor,  
Fountain House,  
2 Queens Walk,  
Reading  
RG1 7QF

**Additional Information**

- |                                     |                                |                               |
|-------------------------------------|--------------------------------|-------------------------------|
| <b>A</b> The Oracle Shopping Centre | <b>E</b> Cinema                | <b>I</b> Town Hall and Museum |
| <b>B</b> Central Library            | <b>F</b> Police Station        | <b>J</b> Tesco Extra          |
| <b>C</b> Abbey Ruins                | <b>G</b> Civic Centre          | <b>K</b> The Hexagon          |
| <b>D</b> Royal Berkshire Hospital   | <b>H</b> Central Swimming Pool | <b>P</b> Parking              |

# Important information (Disclaimer)

This Postgraduate Prospectus is intended as a general guide for prospective postgraduate students.

The University has made every reasonable effort to ensure the information provided in this Postgraduate Prospectus is accurate at the time of publication. The University however does not represent or warrant that the information provided is accurate, complete, or current.

We recommend that you contact the University to check the current position on courses and services.

The University aims to provide the courses, University services and facilities described in this Postgraduate Prospectus. However, courses, University services and content of publications remain subject to change. Changes to courses and University services may be necessary in order to comply with the requirements of accrediting bodies, to keep courses current through updating best practices or areas of study, to improve the quality of educational services, or in response to student feedback.

Circumstances may also arise outside the reasonable control of the University leading to required changes. Such circumstances include unexpected student numbers or lack of demand, significant staff illness (where a course is reliant upon a person's expertise), unexpected lack of funding, severe weather, natural disaster, epidemic or pandemic, fire, civil disorder, political unrest and government restrictions making a course unsafe to deliver or changes in applicable laws.

After a student has taken up a place with the University, the University will look to give early notification of any changes and try to minimise their impact, offering suitable alternative arrangements where possible.

Up-to-date information on courses will also be provided with an offer of a place to study where required. The latest key information on courses, entry requirements and fees can be found at [www.uwl.ac.uk/students/postgraduate](http://www.uwl.ac.uk/students/postgraduate).

Please check this website and/or contact the University at [courses@uwl.ac.uk](mailto:courses@uwl.ac.uk) before making any decisions to ensure that you have the University's most up-to-date published information.

For full details see the University's Terms and Conditions available here [www.uwl.ac.uk/terms](http://www.uwl.ac.uk/terms)

**Copyright © University of West London 2024**

All rights reserved. No part of this publication may be reproduced, stored in a retrieval system or transmitted in any form or by any means, electronic, mechanical, photocopying, recording or otherwise, without the permission of the University.

Published by  
**The University of West London**

Artwork by  
**Moox Creative**

Printed by  
**A McLays**

**University of  
West London**

St Mary's Road  
Ealing  
London W5 5RF

**University of  
West London**

Boston Manor Road  
Brentford  
Middlesex TW8 9GA

**University of  
West London**

Fountain House  
2 Queens Walk  
Reading RG1 7QF

Tel: 0800 036 8888

Int: +44 (0)20 8231 2468

[www.uwl.ac.uk](http://www.uwl.ac.uk)

 UniWestLondon

 uniwestlondon

 UniversityWestLondon

 University of West London

 University of West London

